

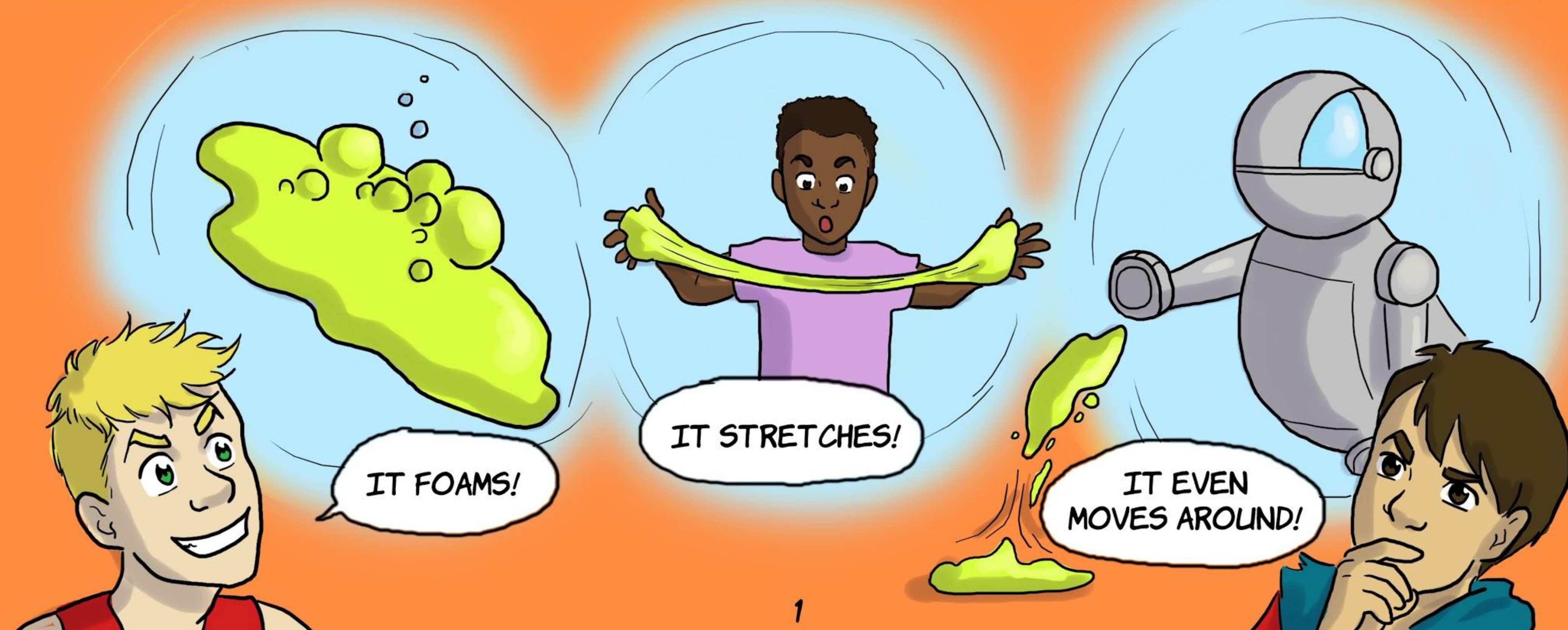
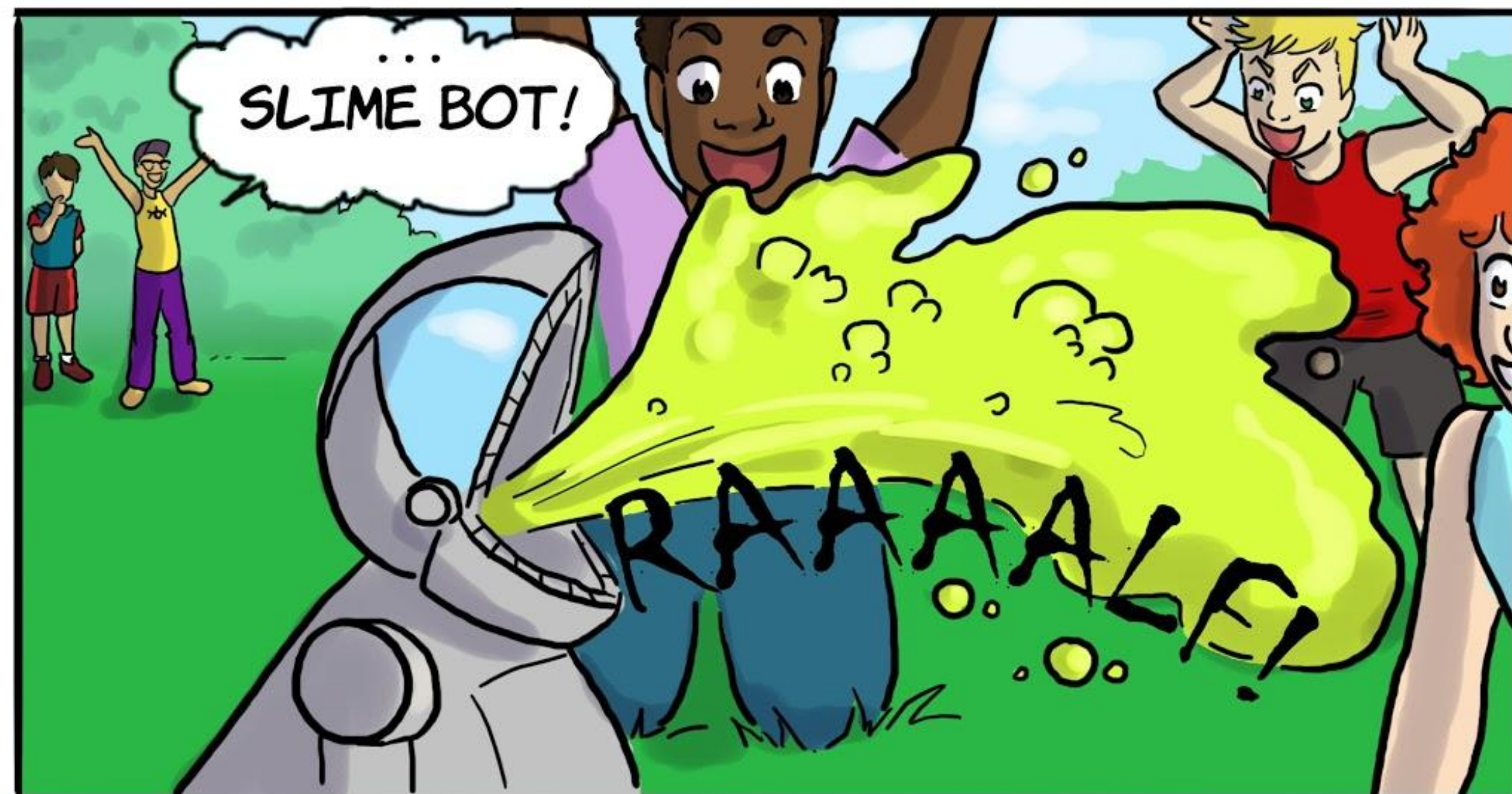
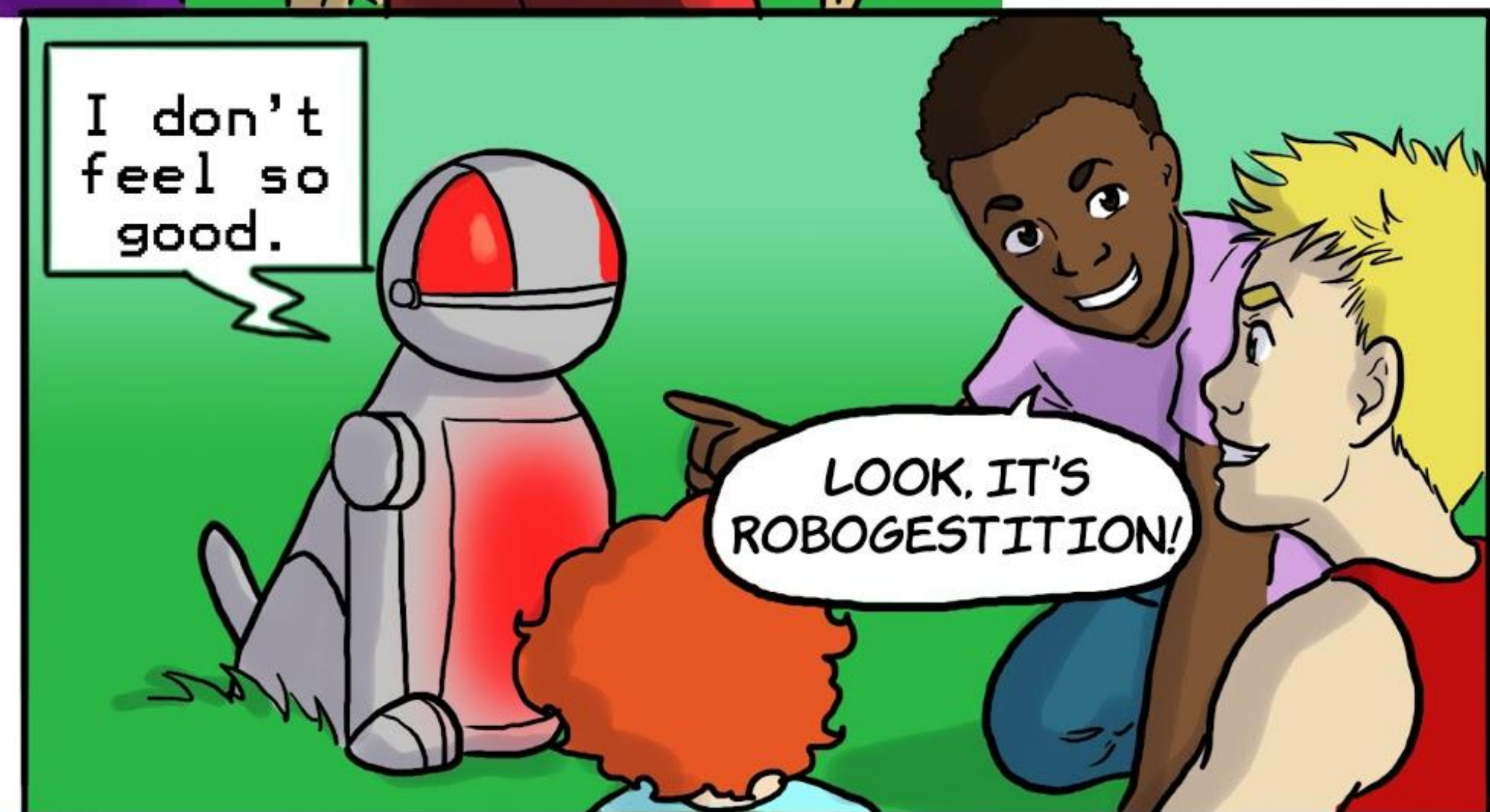
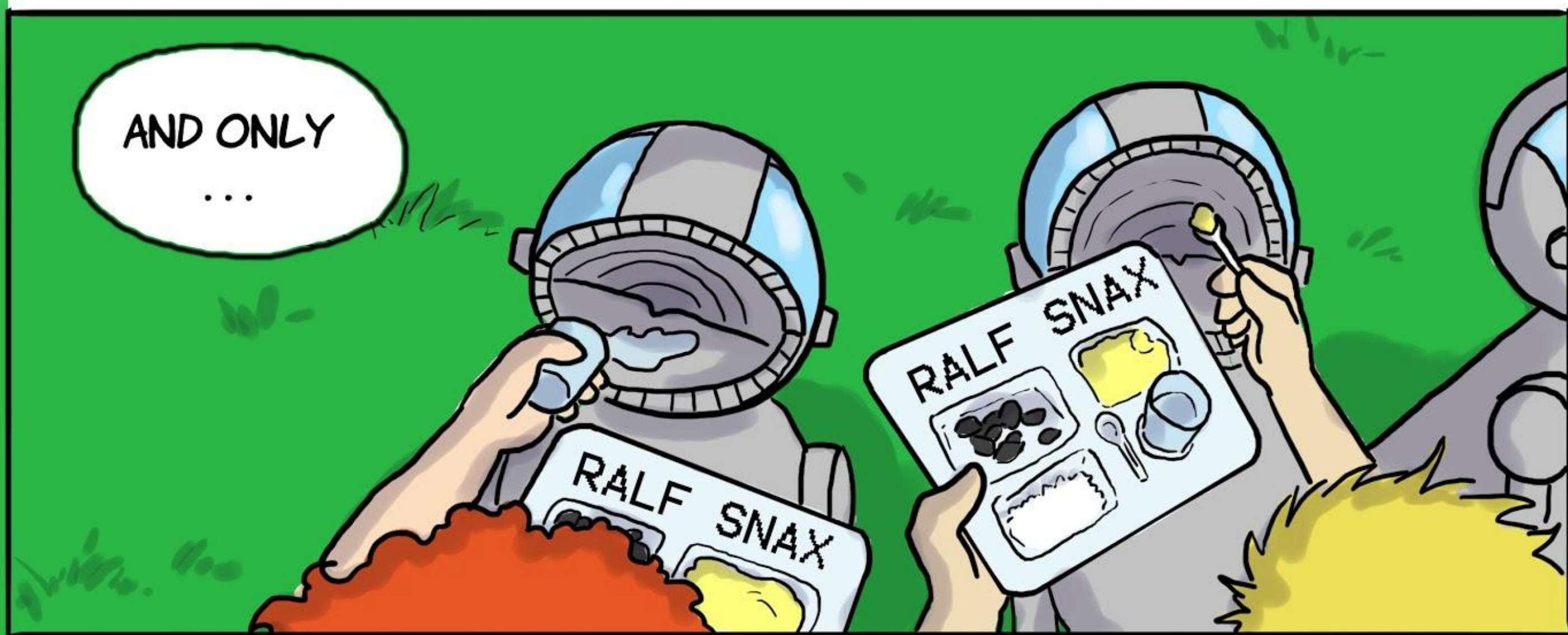
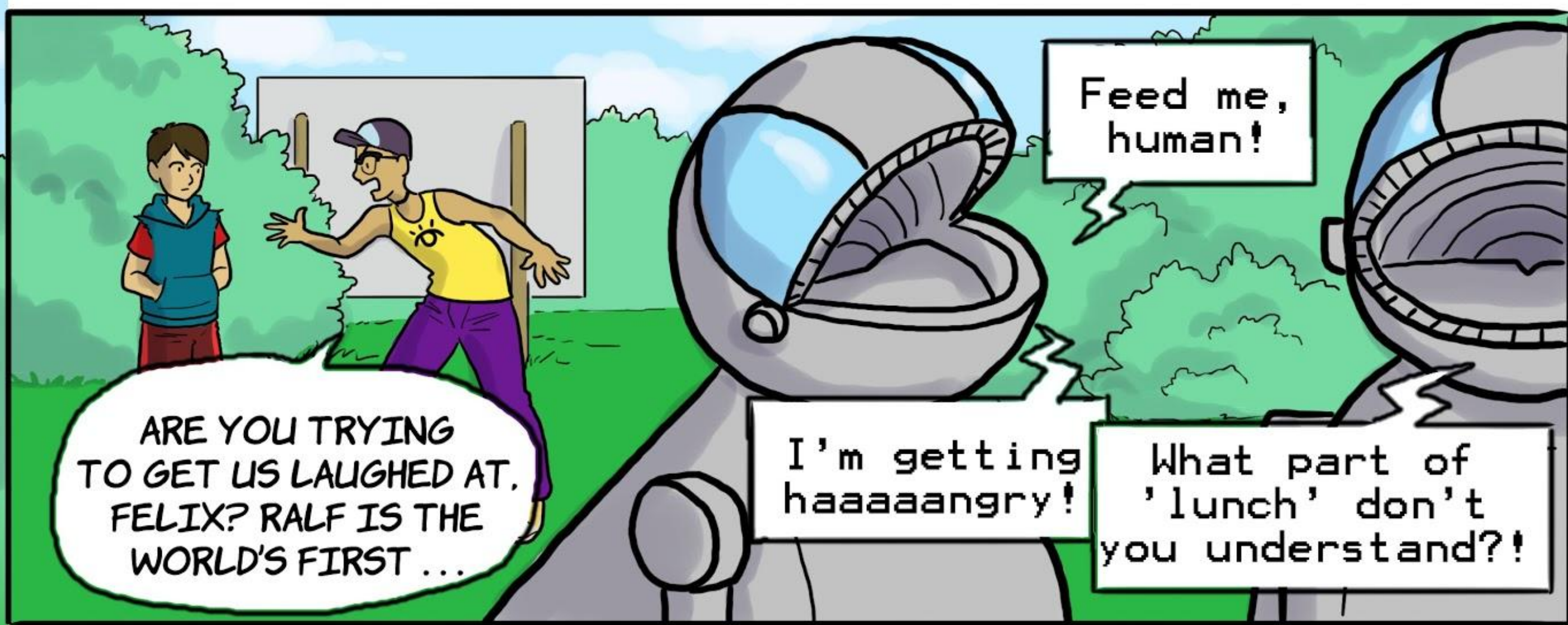
*UNIT:  
MATTER AND  
ITS INTERACTIONS*

# **MOSA MACK**

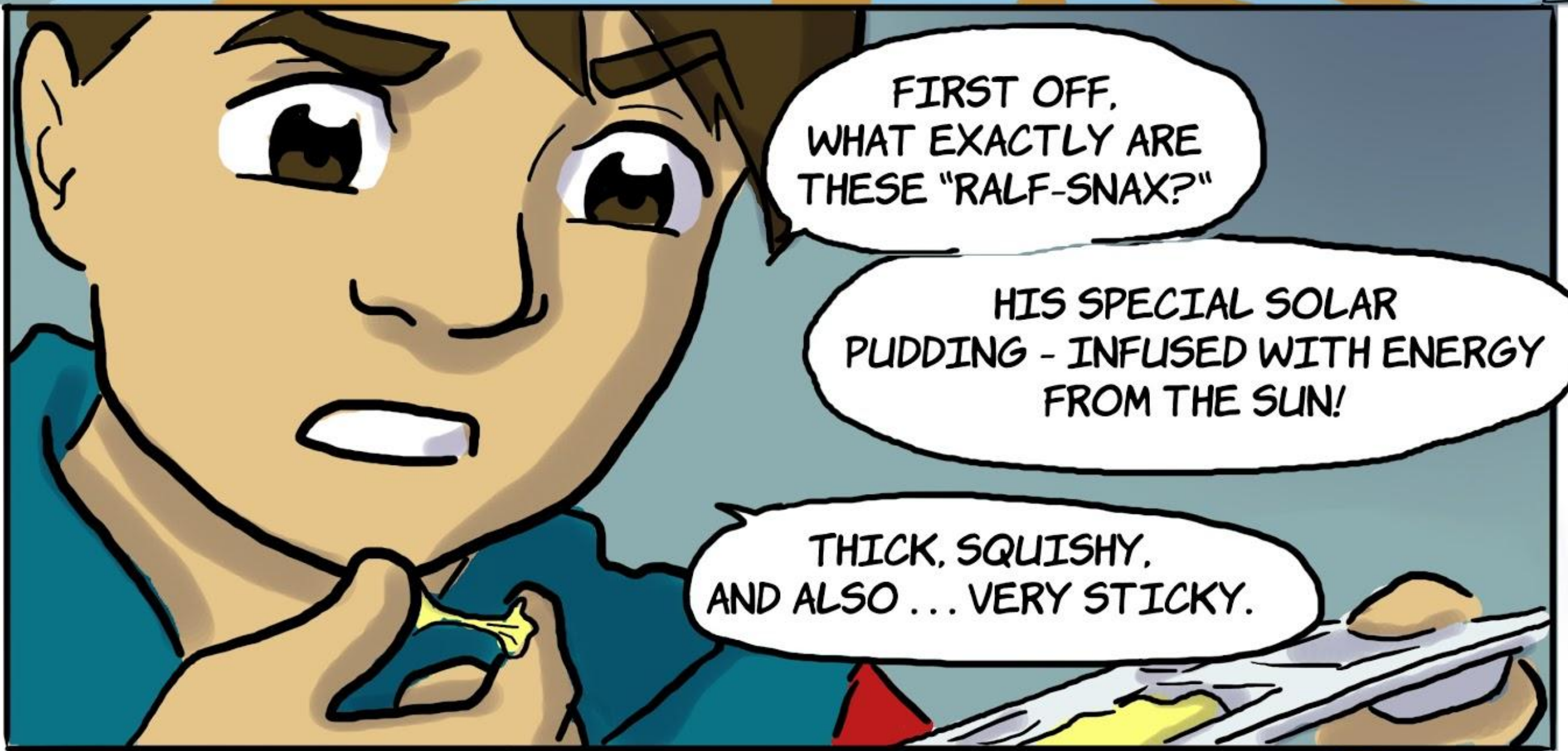
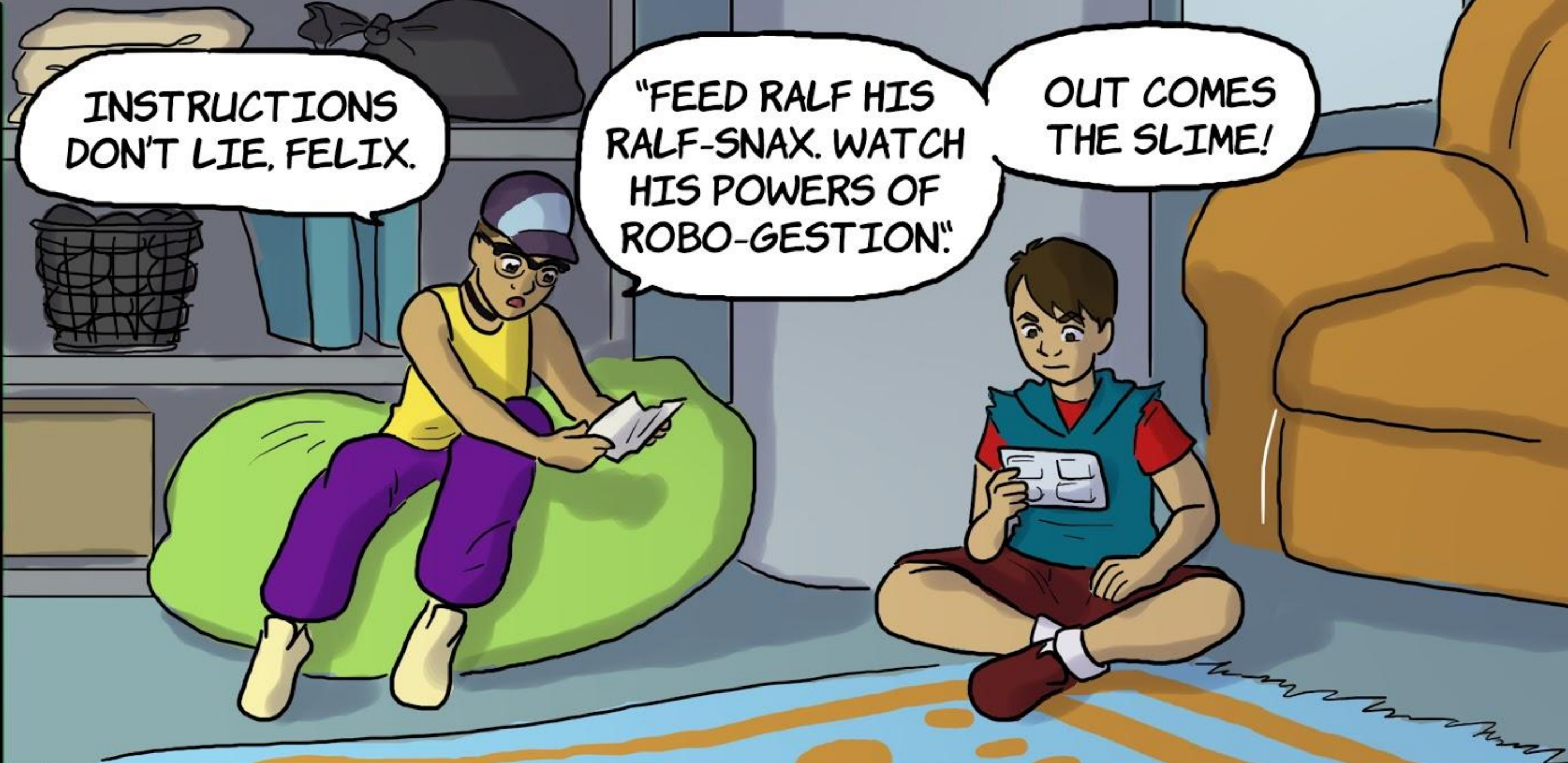
*FELIX AND JOJO IN  
SLIME BOT OR SCAM?*















IT'S PLAIN  
OLD PAPER GLUE,  
WITH A FEW DROPS  
FOOD COLORING.

WHAT ABOUT  
THIS?

RALF'S ARCTIC  
SUPER SNOW  
SPRINKLES;

STRAIGHT FROM  
THE GLACIERS OF  
THE NORTH POLE!

POWDERY  
AND SOFT!

BUT NOT  
AT ALL COLD.



AND IF IT  
WAS SNOW, IT  
WOULD MELT.

BUT YOU CAN  
STILL SEE THE  
POWDER.

THAT'S JUST  
BAKING SODA.

ZEP  
FOR T



RALF'S FOSSIL  
FUEL GO-DRINK!  
LIQUID, CRYSTAL  
CLEAR...

... WITH A SMELL  
THAT'S SOMEWHERE  
BETWEEN TANGY  
AND SOUR!



SNIFF  
SNIFF

THAT'S NOT  
GAS. THAT'S  
...

... VINEGAR.

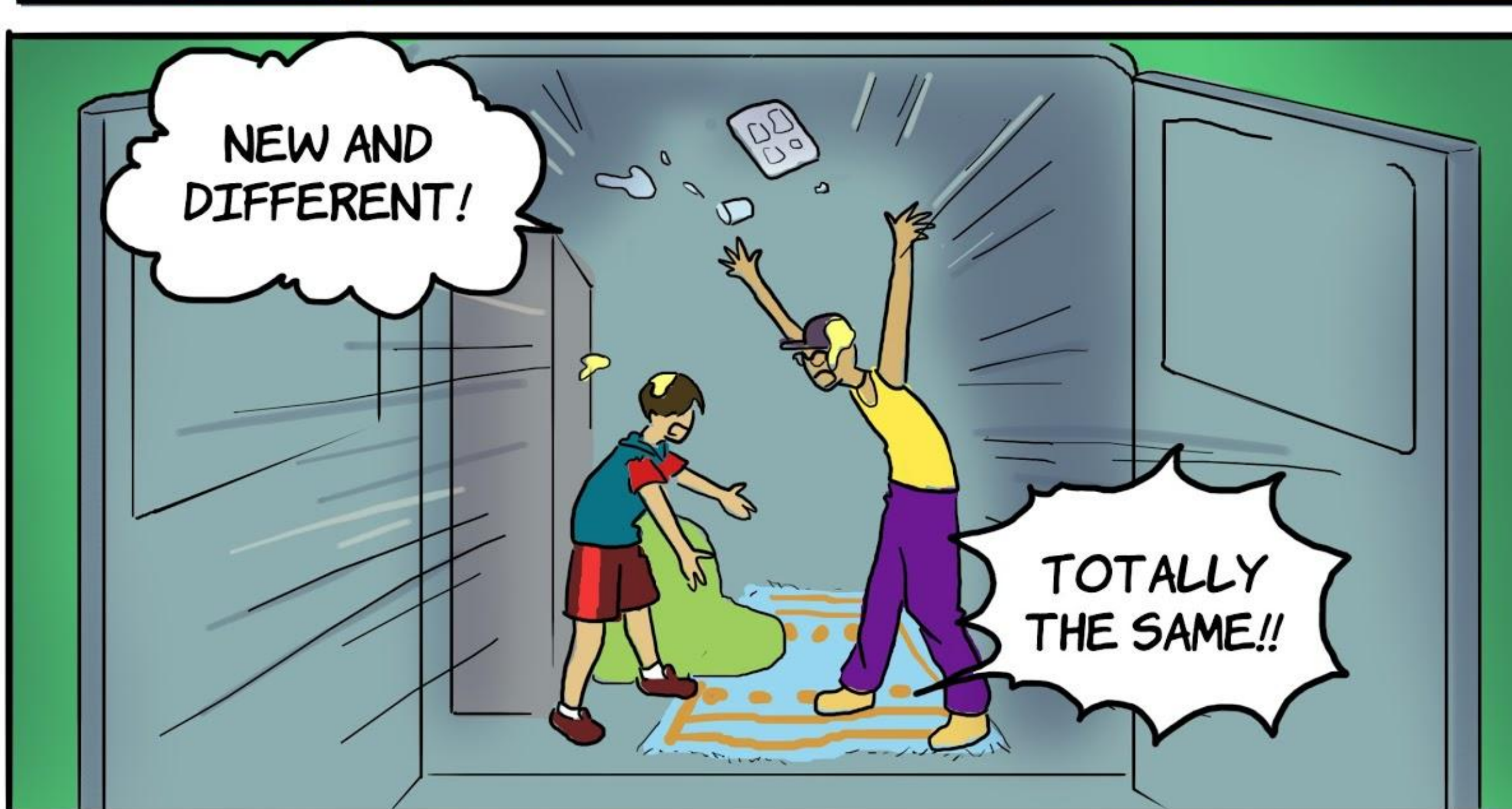
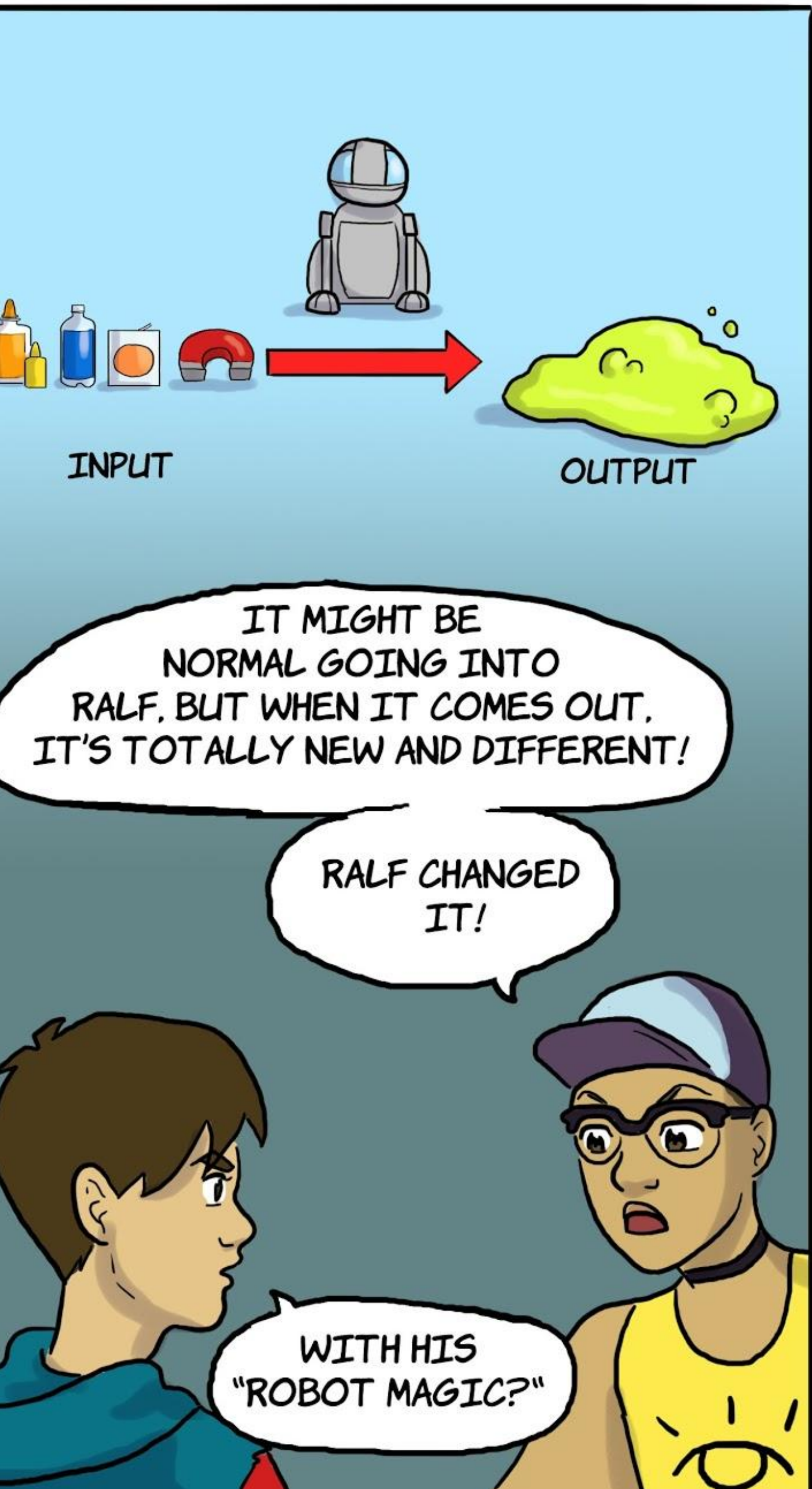
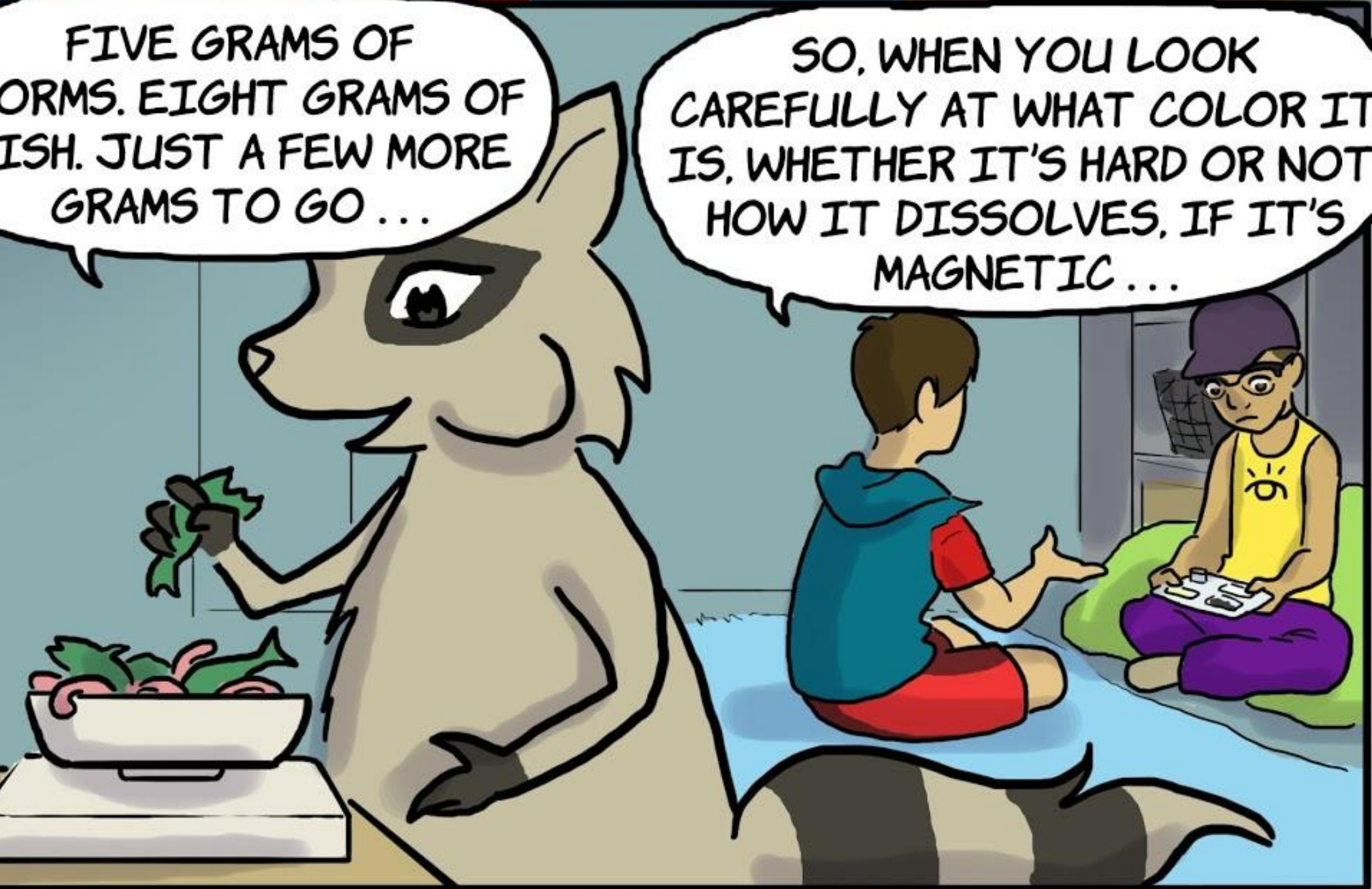
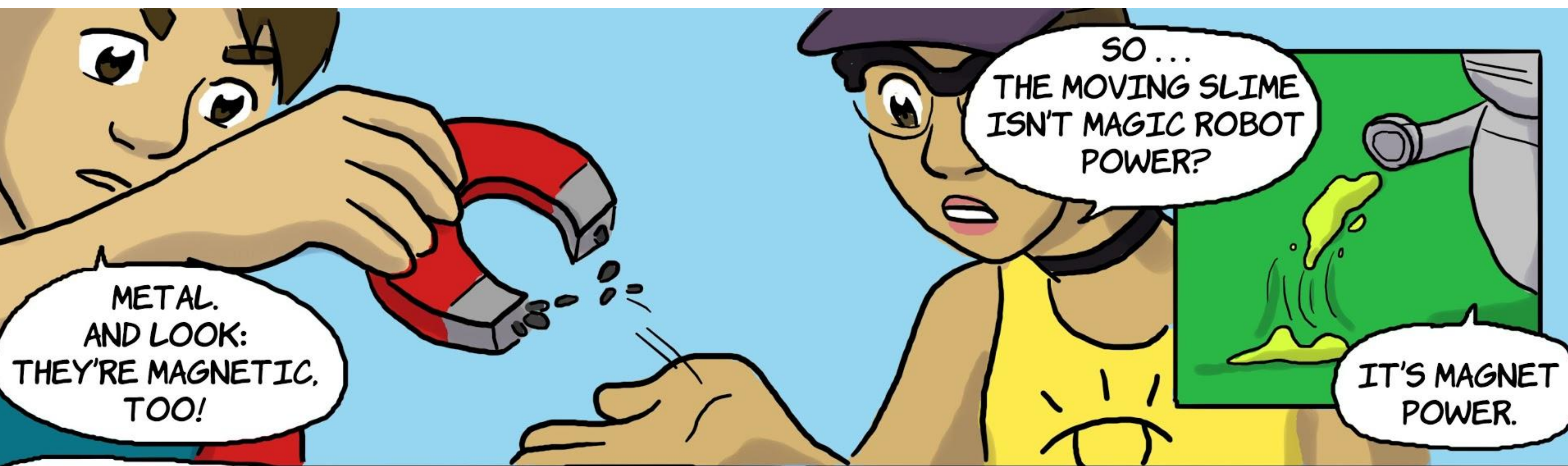


OKAY, BUT THESE  
VOLCANIC RAGE  
LAVA-NUGGETS ARE  
THE REAL DEAL!

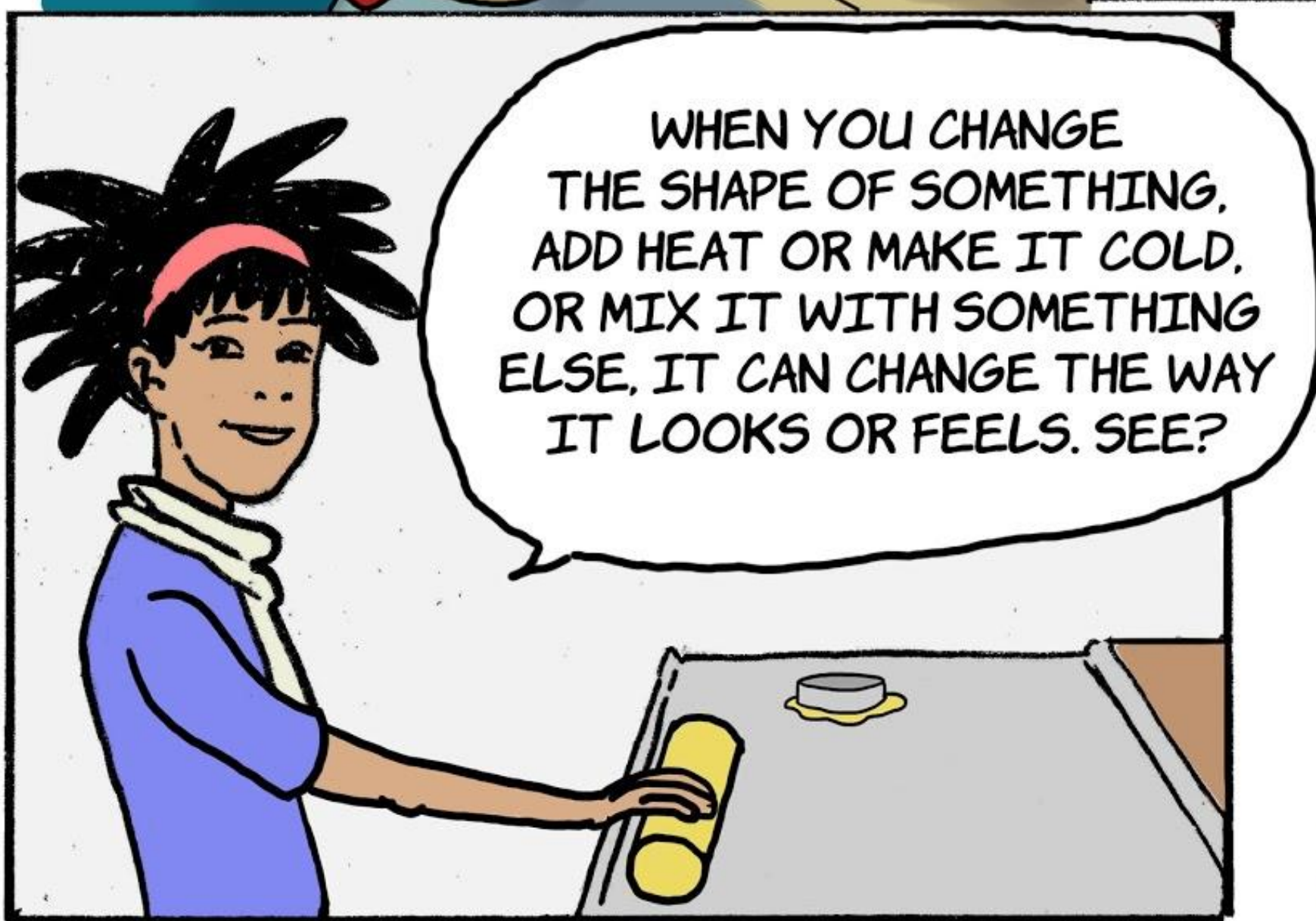
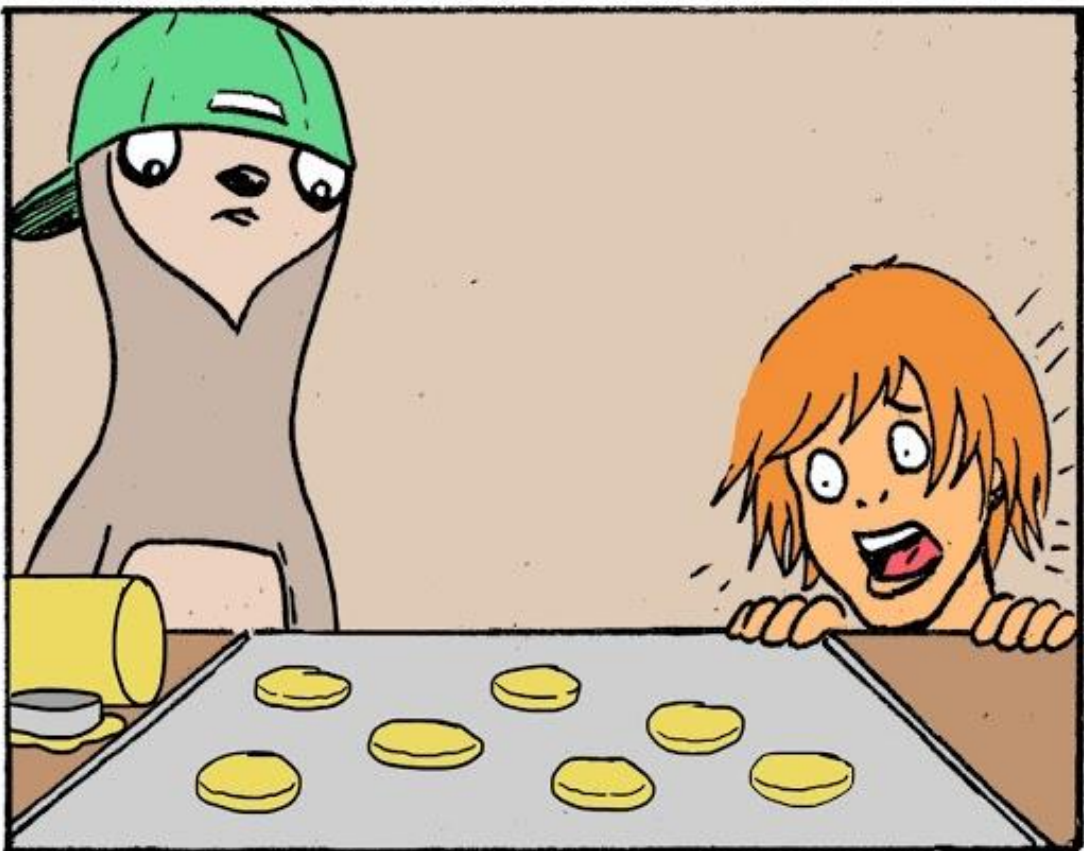
HARD AND BLACK  
JUST LIKE LAVA  
AFTER IT COOLS

OKAY, HARD, YES  
BUT ALSO SHINY-  
KIND OF LIKE











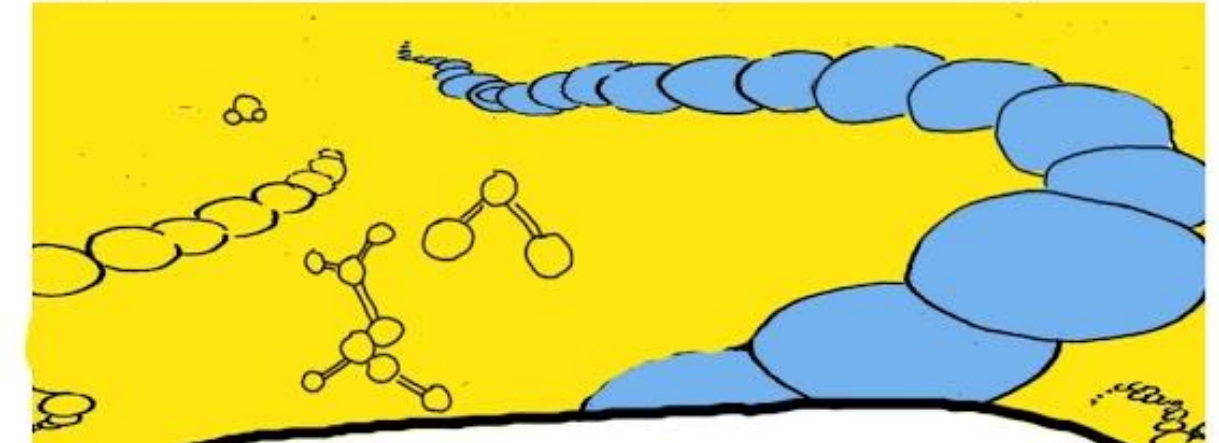
BUT SOMETIMES YOU ACTUALLY CAN MAKE A NEW SUBSTANCE THAT YOU CAN'T CHANGE BACK!



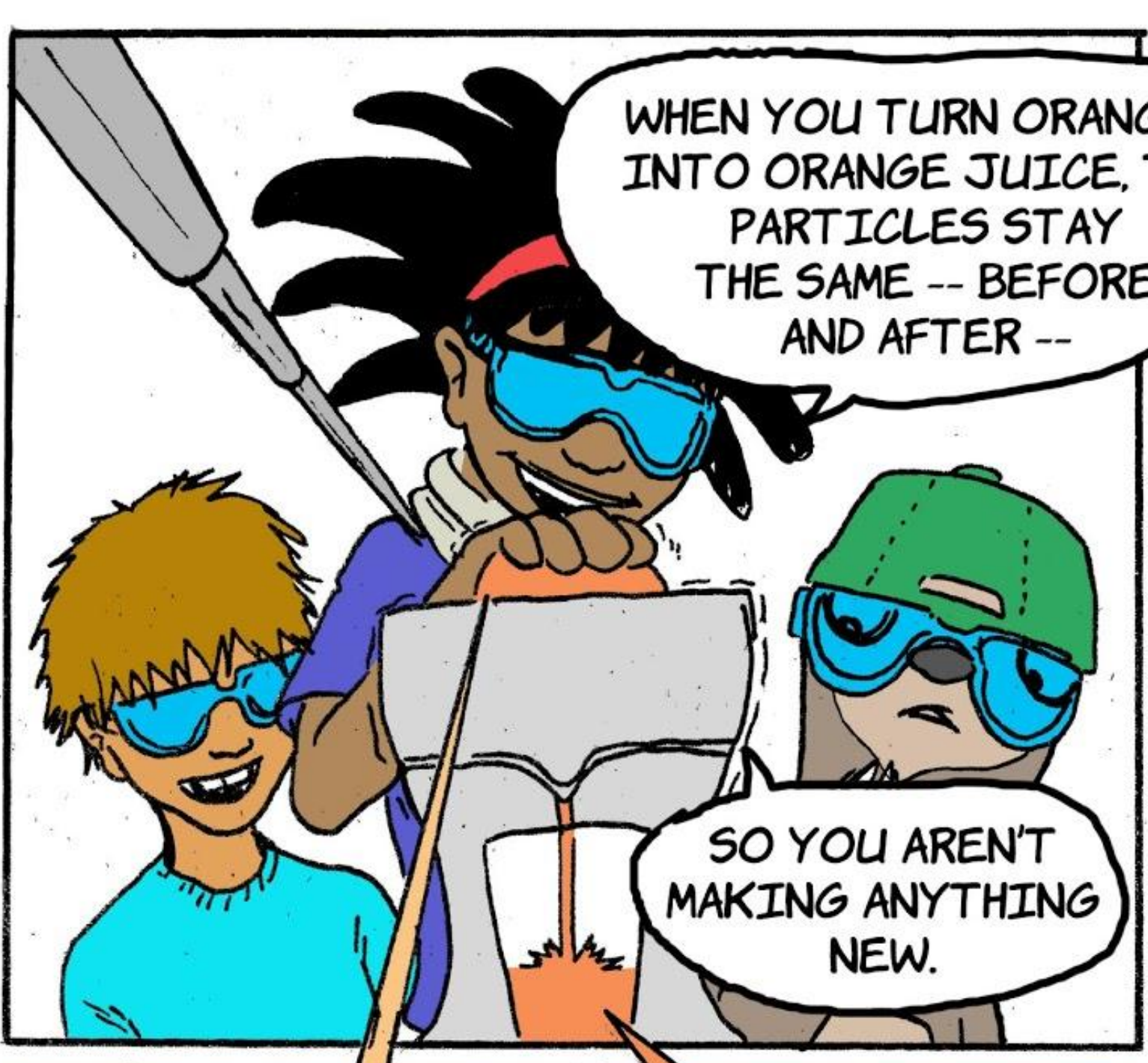
LIKE WHEN YOU COOK AN EGG.



FROM THE MOSA MACK FILES

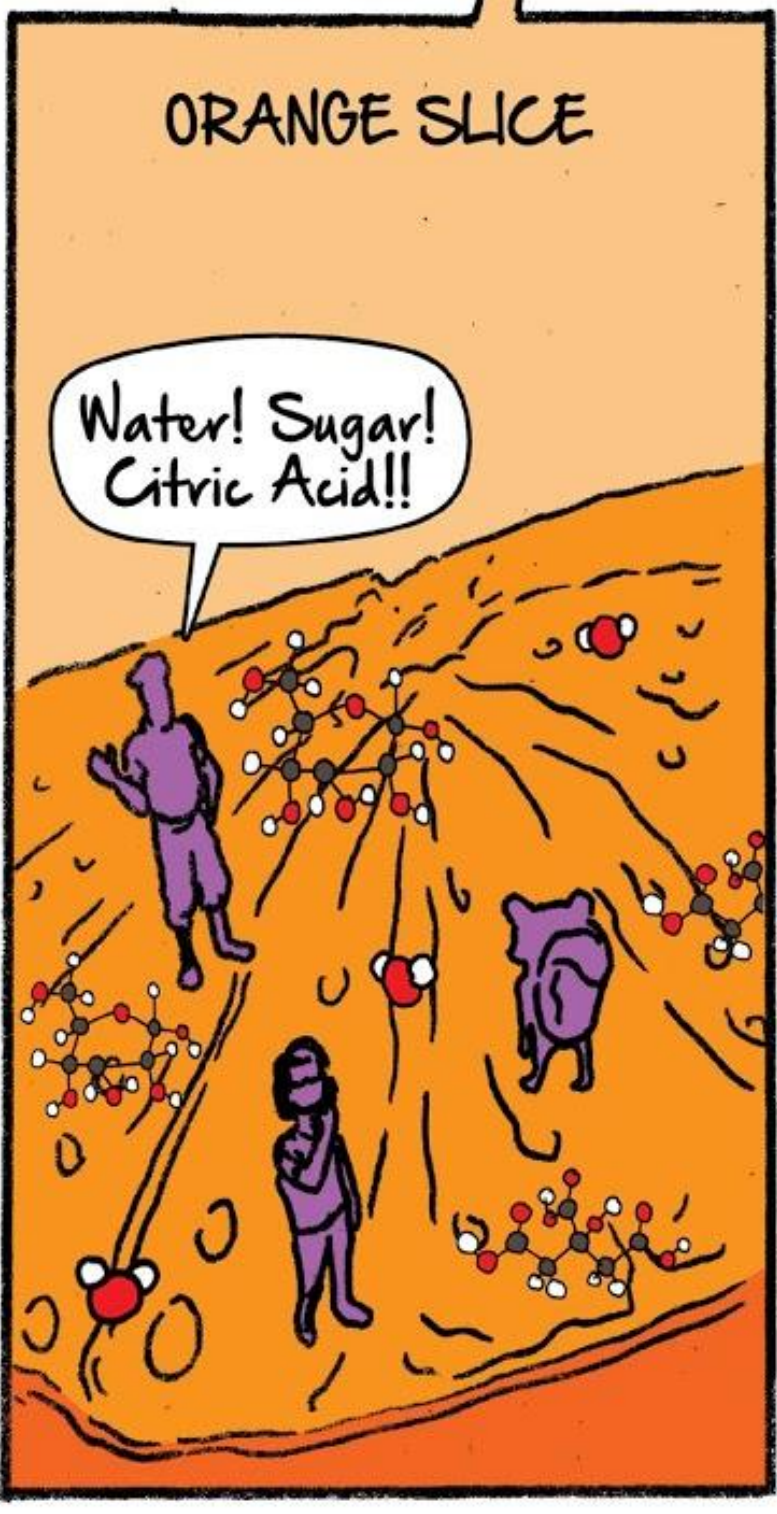


WITH THIS SUPER SHRINKING MACHINE, I CAN LOOK INSIDE STUFF. TURNS OUT, ALL MATTER IS MADE OF PARTICLES THAT ARE TOO SMALL TO SEE!



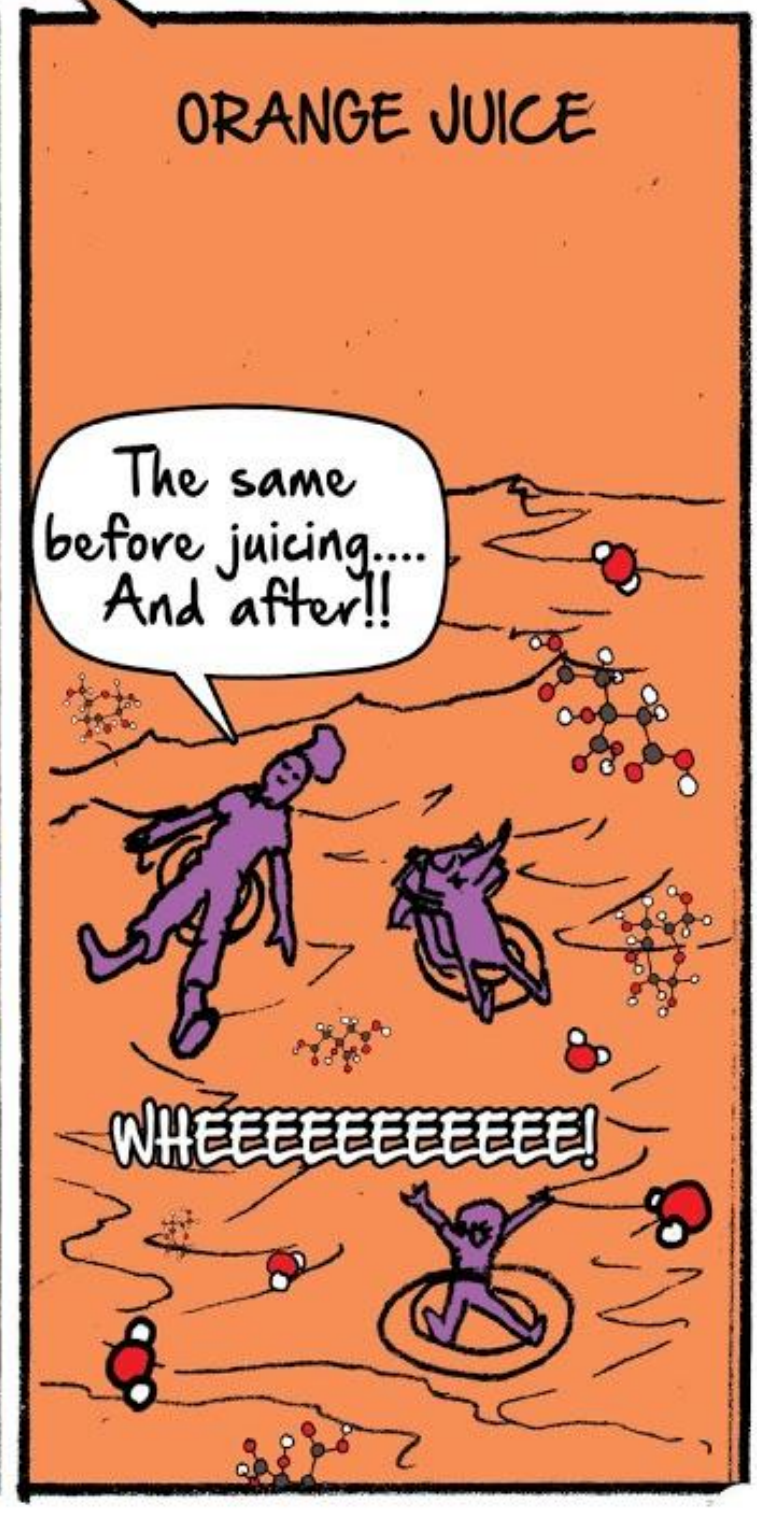
WHEN YOU TURN ORANGES INTO ORANGE JUICE, THE PARTICLES STAY THE SAME -- BEFORE AND AFTER --

SO YOU AREN'T MAKING ANYTHING NEW.



ORANGE SLICE

Water! Sugar! Citric Acid!!



ORANGE JUICE

The same before juicing.... And after!!

WHEEEEEEEEEE!



BUT ... WHEN YOU TOAST TOAST OR PUT ALKA-SELTZER INTO WATER, THE PARTICLES CHANGE!

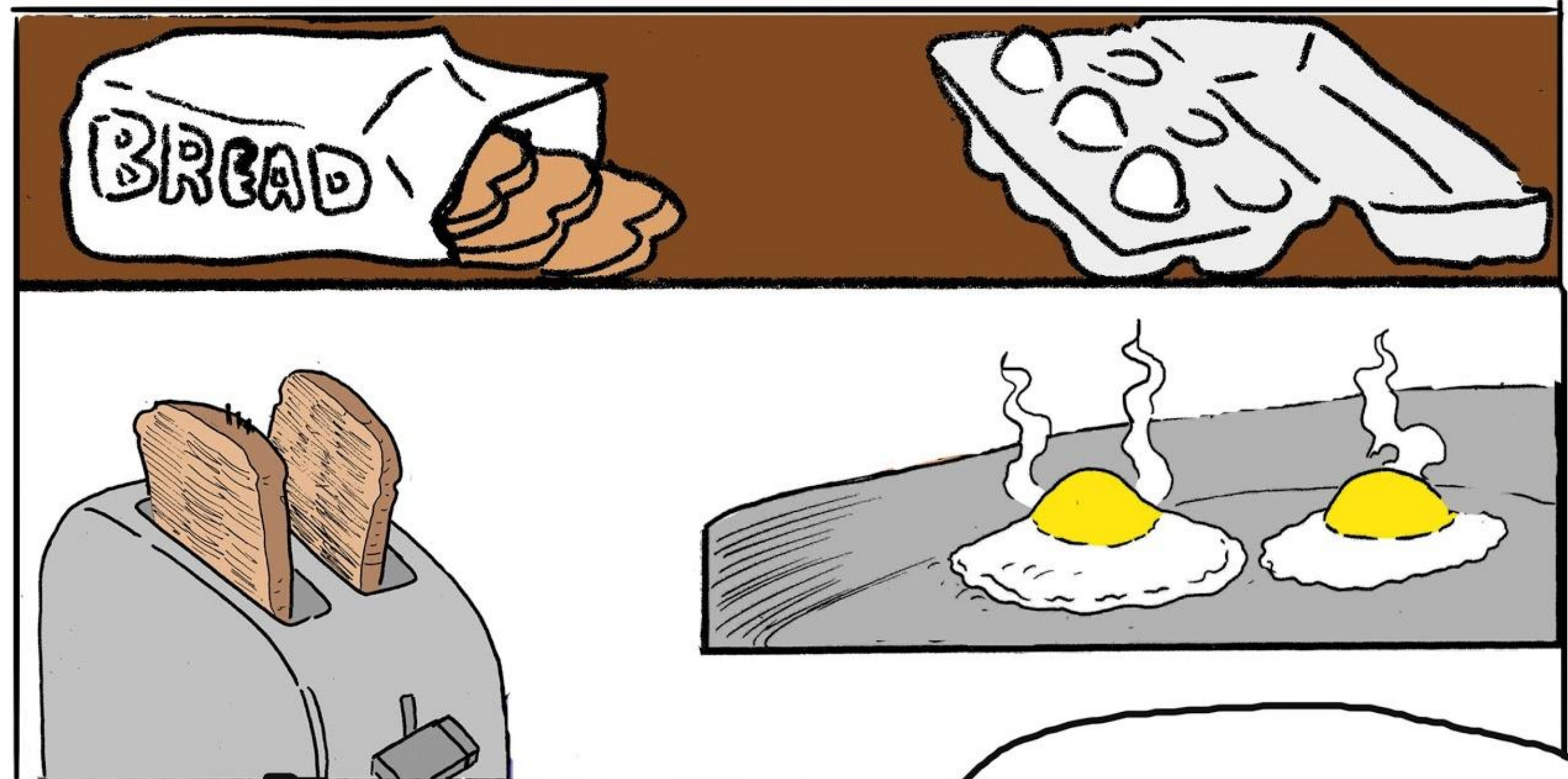
AND THEY CAN'T CHANGE BACK!! THAT MEANS YOU ARE MAKING SOMETHING NEW!



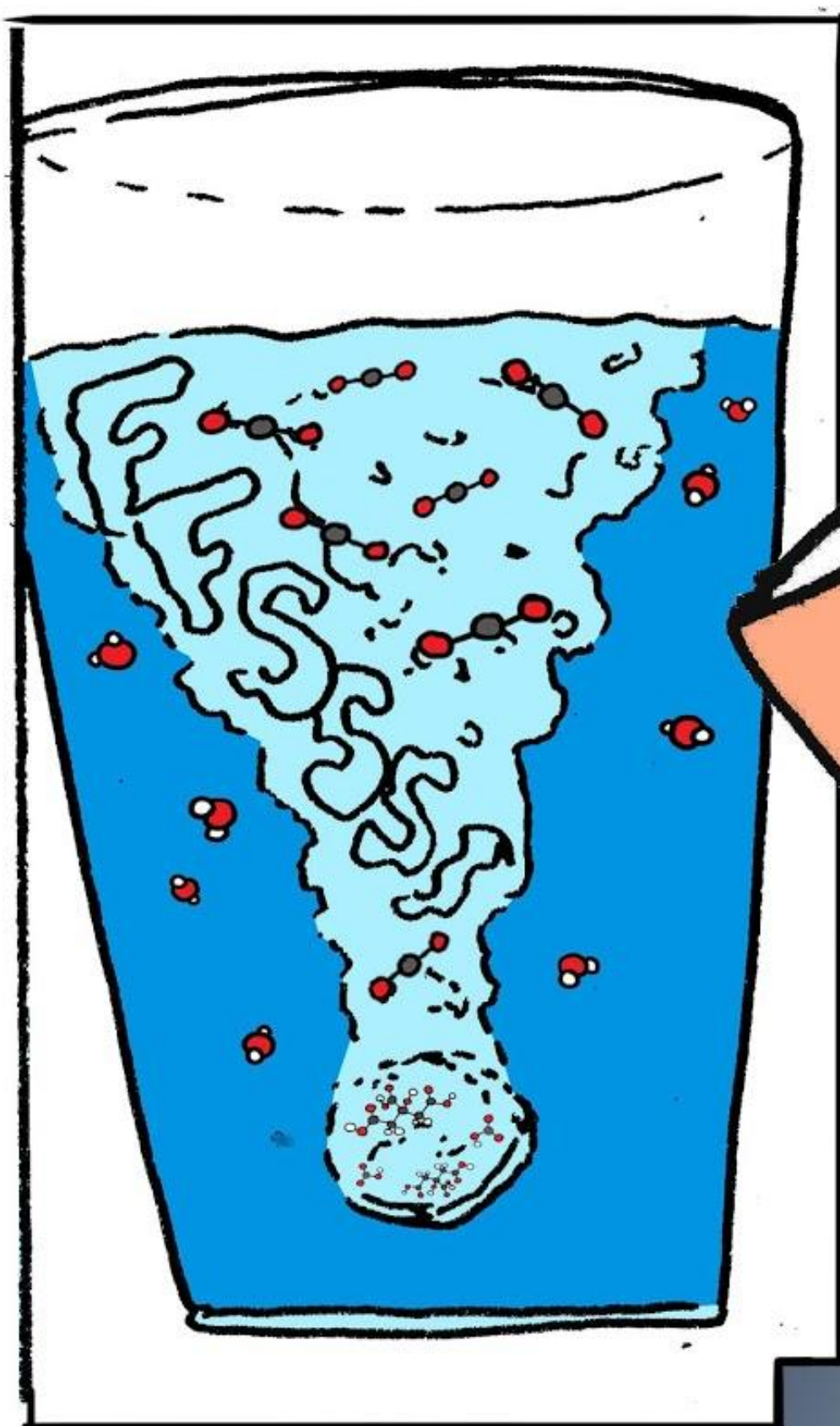
UNFORTUNATELY, MOSA'S SHRINKING MACHINE IS NOT AVAILABLE ON AMAZON PRIME.

NOT TO WORRY! EVEN THOUGH WE CAN'T SEE THOSE TINY PARTICLES, THERE'S LOTS WE CAN LEARN WITH OUR REGULAR OLD EYES, EARS, AND NOSE, ACCORDING TO MOSA...

FROM THE MOSA MACK FILES

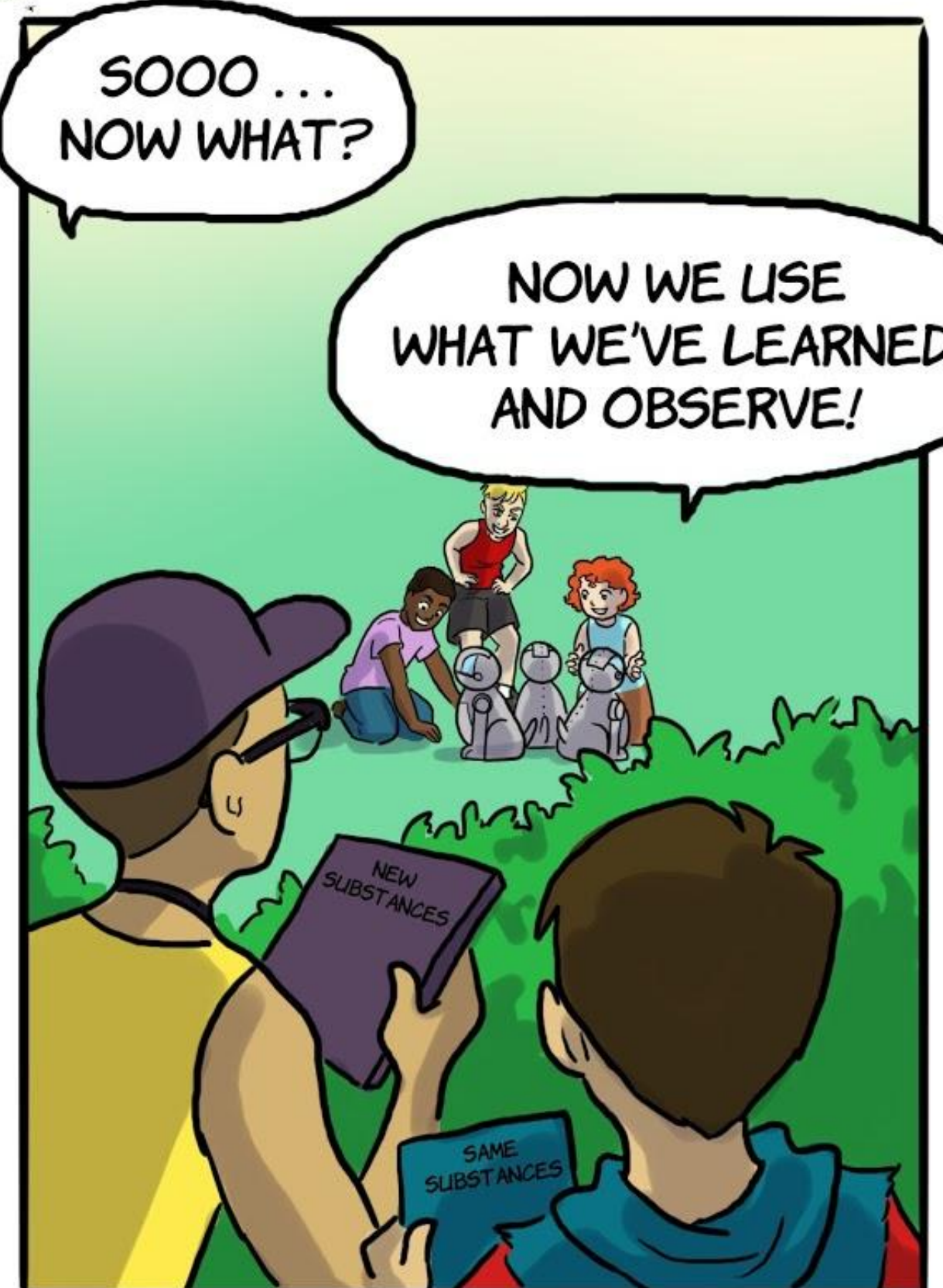


IF YOU'RE MAKING A NEW SUBSTANCE, YOU MIGHT SEE A COLOR CHANGE  
YOU MIGHT NOTICE A NEW SMELL.  
OR IT MIGHT BUBBLE OR FIZZ.

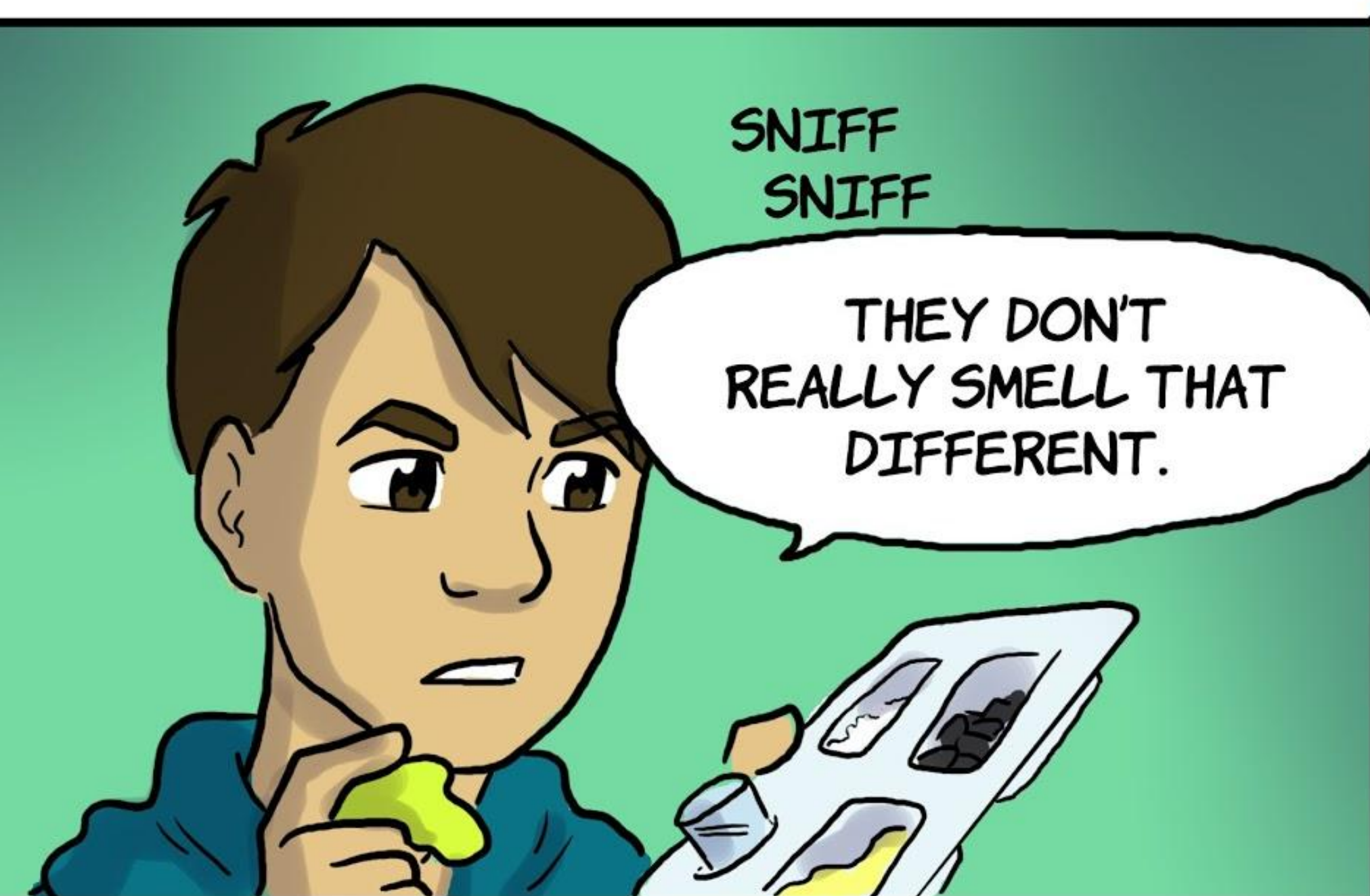


SOOO ...  
NOW WHAT?

NOW WE USE  
WHAT WE'VE LEARNED,  
AND OBSERVE!





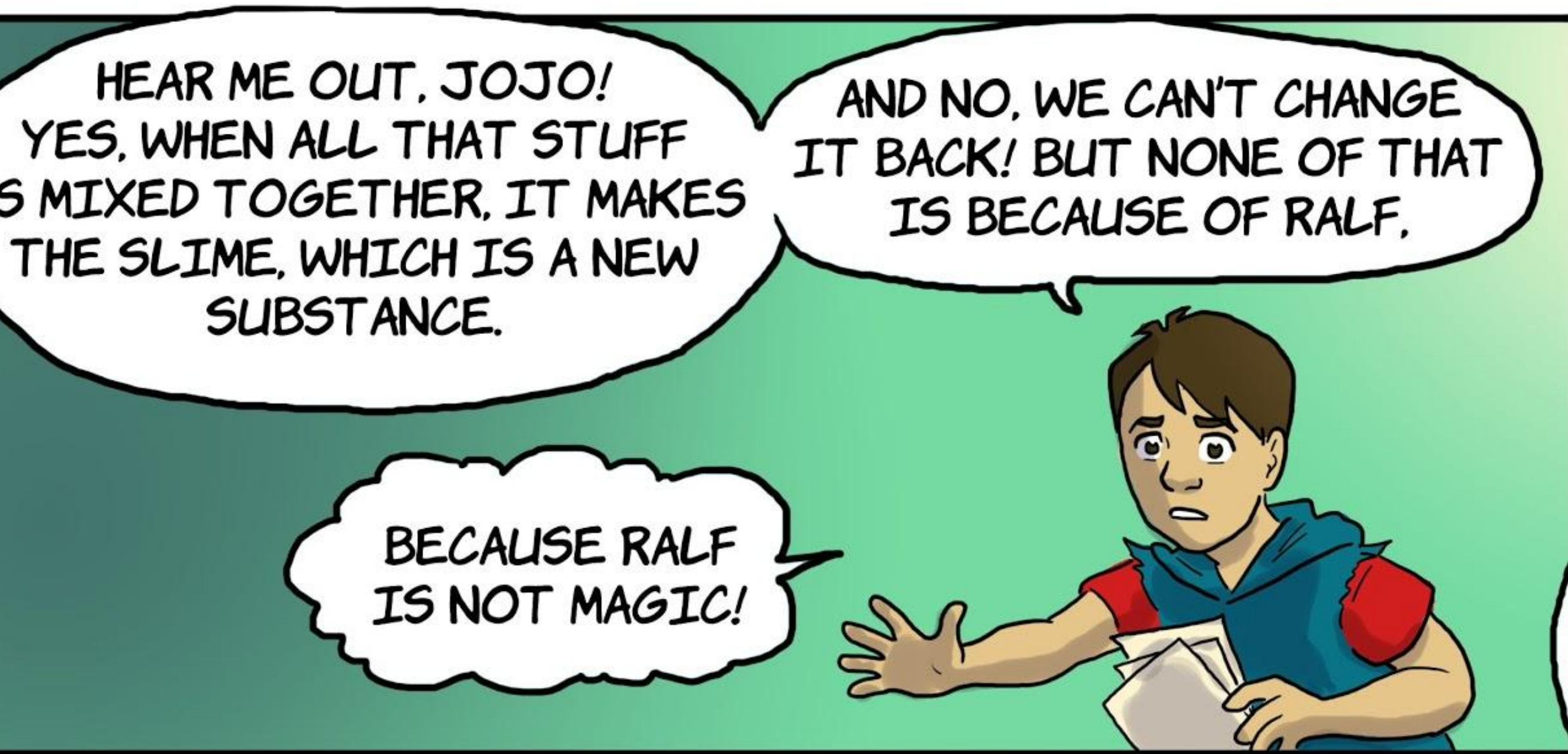




HEAR ME OUT, JOJO!  
YES, WHEN ALL THAT STUFF  
IS MIXED TOGETHER, IT MAKES  
THE SLIME, WHICH IS A NEW  
SUBSTANCE.

AND NO, WE CAN'T CHANGE  
IT BACK! BUT NONE OF THAT  
IS BECAUSE OF RALF.

BECAUSE RALF  
IS NOT MAGIC!

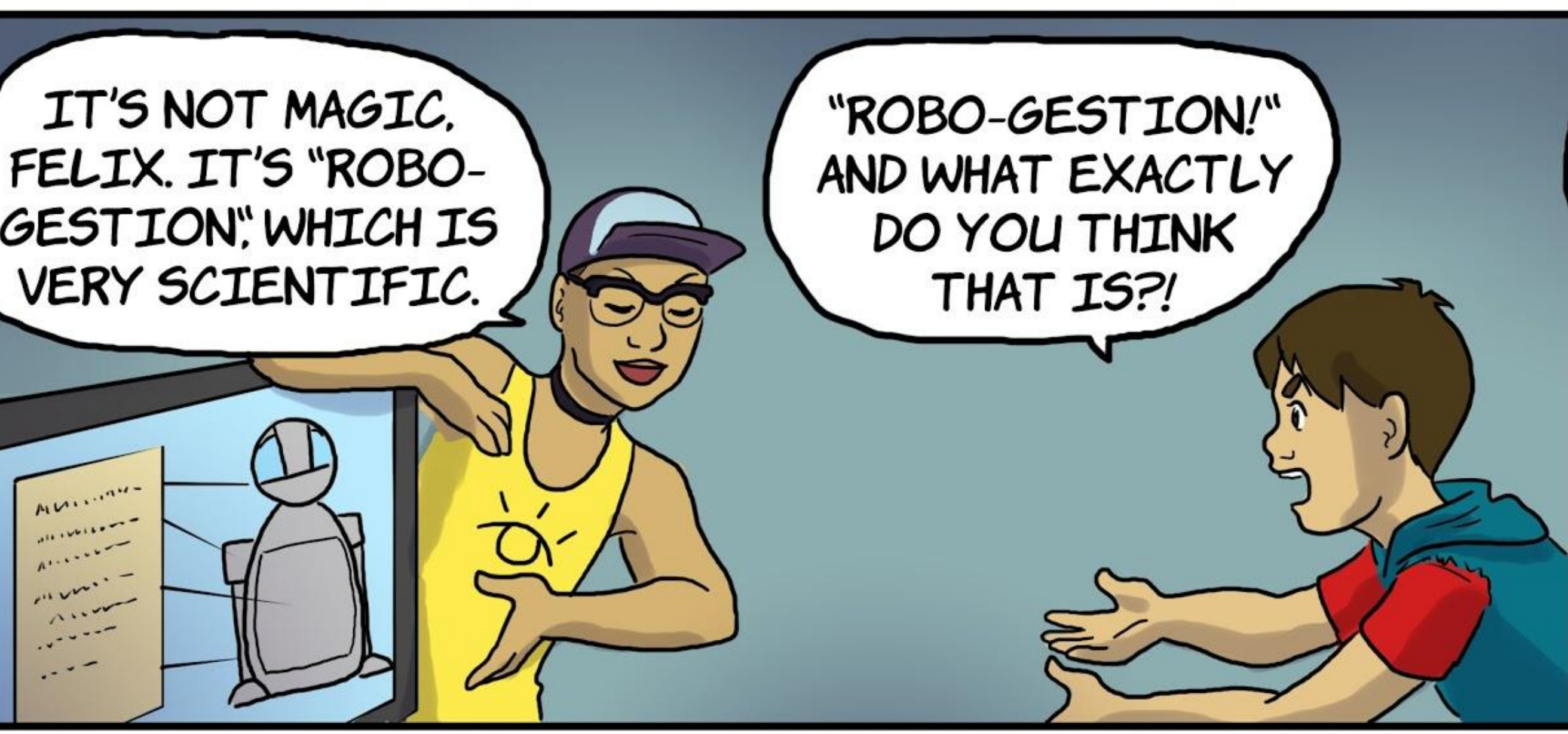


OKAY. WELL.  
ROBOGESTION  
BLENDS ALL THE  
INGREDIENTS  
...  
BURNS OFF  
ALL THE BORING  
STUFF,  
AND REDUCES  
IT DOWN TO  
A PURE, AMAZING  
...  
... NEW  
SUBSTANCE!



IT'S NOT MAGIC,  
FELIX. IT'S "ROBO-  
GESTION", WHICH IS  
VERY SCIENTIFIC.

"ROBO-GESTION!"  
AND WHAT EXACTLY  
DO YOU THINK  
THAT IS?!



SO YOU'RE  
SAYING ... WHAT  
GOES INTO  
RALF IS MORE  
THAN WHAT GOES  
OUT.

DUH.  
FINISHED  
STALLING?

**SMASH!**



FIFTY ONE,  
FIFTY TWO ...

SIGH.  
WHAT EXACTLY  
ARE YOU DOING,  
BETTY?

THIS MORNING I WAS  
16 KILOGRAMS. IF I CAN STUFF  
TWO MORE KILOGRAMS OF FOOD  
INSIDE ME, THAT'LL BRING ME UP  
TO 18 KILOGRAMS.

IF I CAN GET TO THE  
AUDITION BEFORE I HAVE  
TO GO TO THE BATHROOM,  
I'M A STAR!



MIND IF  
I BORROW  
YOUR -

ME-ME-ME-ME-  
MEEEE! ♪

