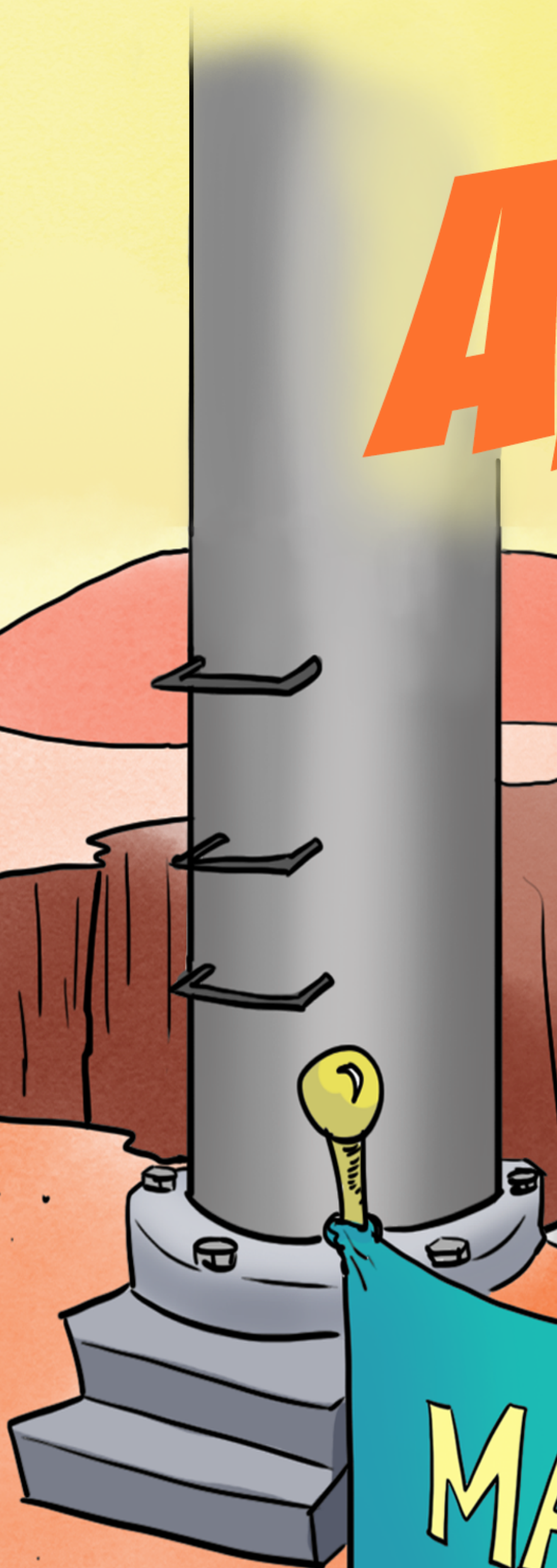
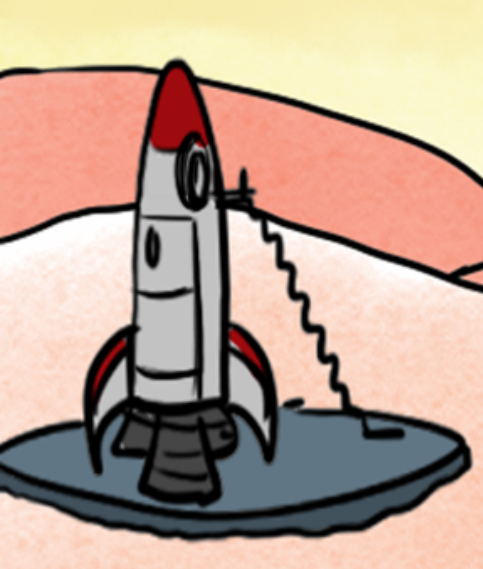
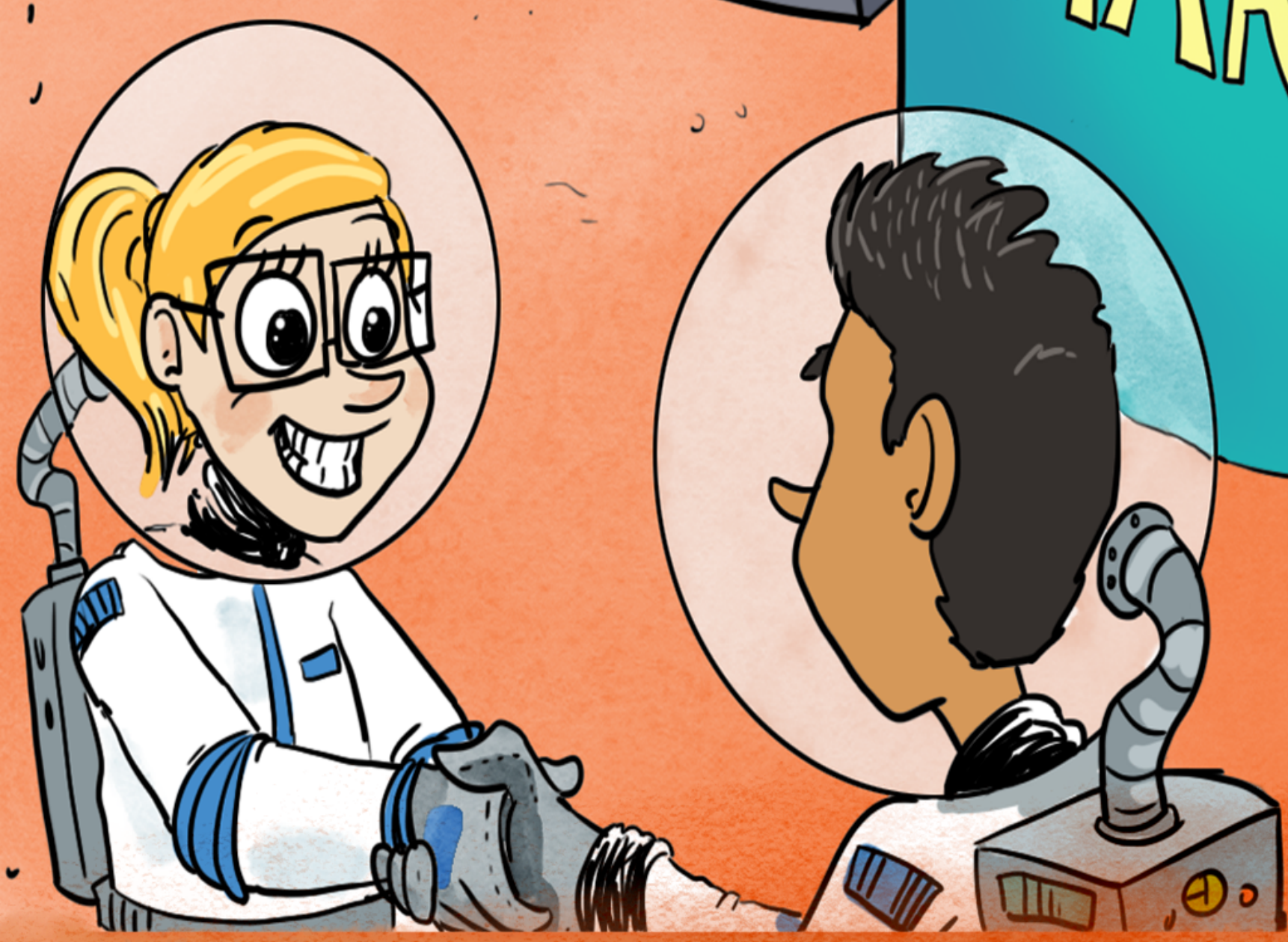


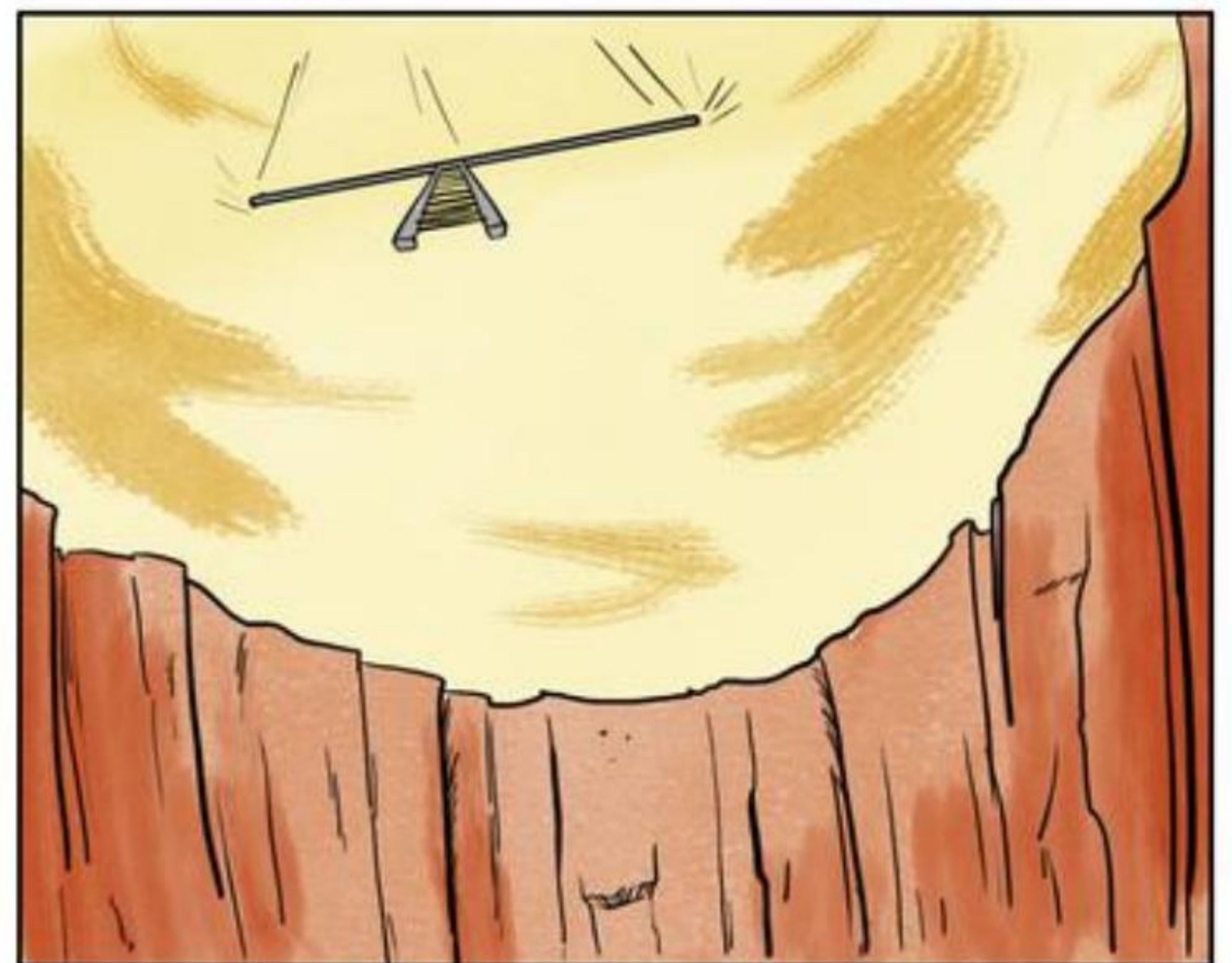
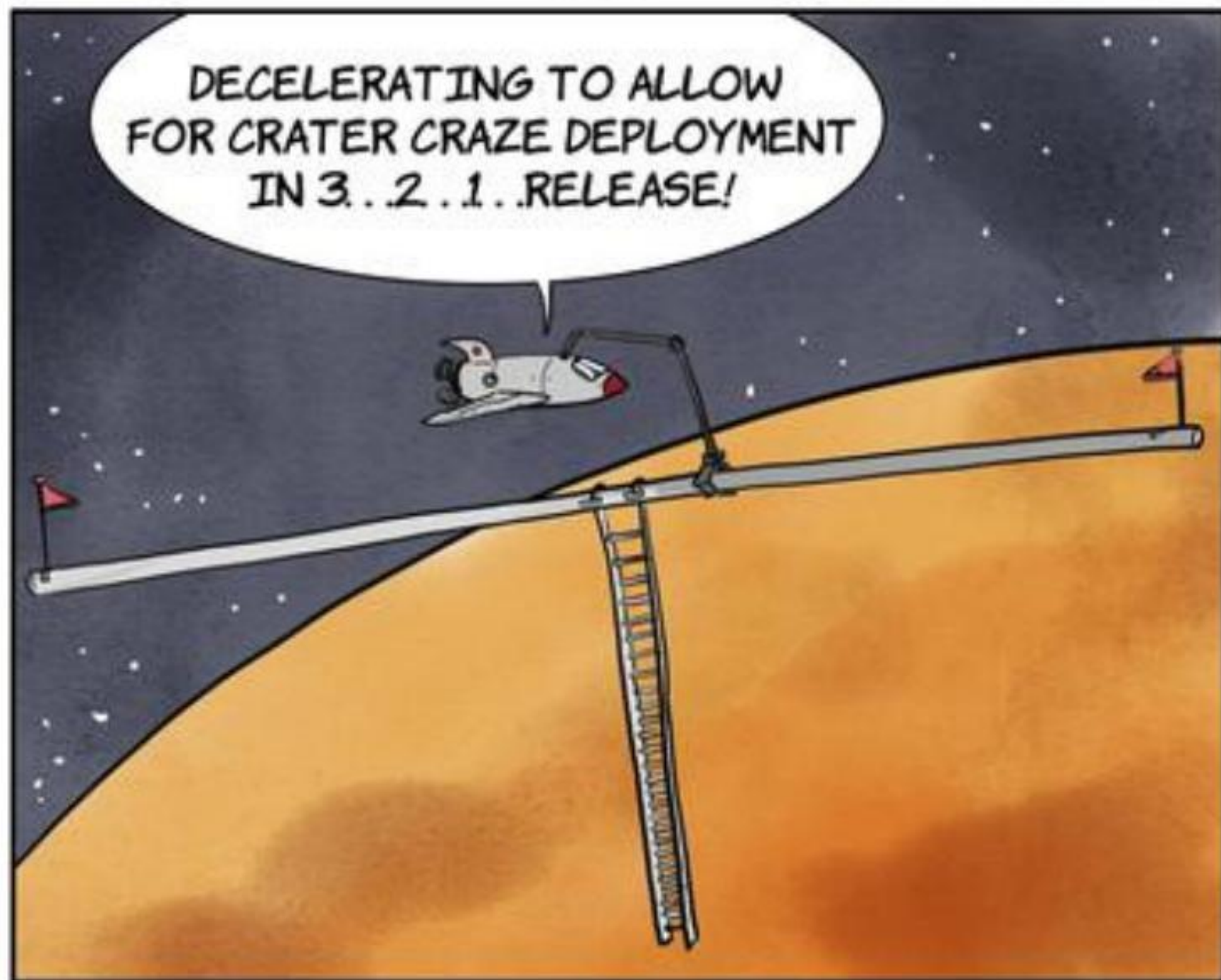
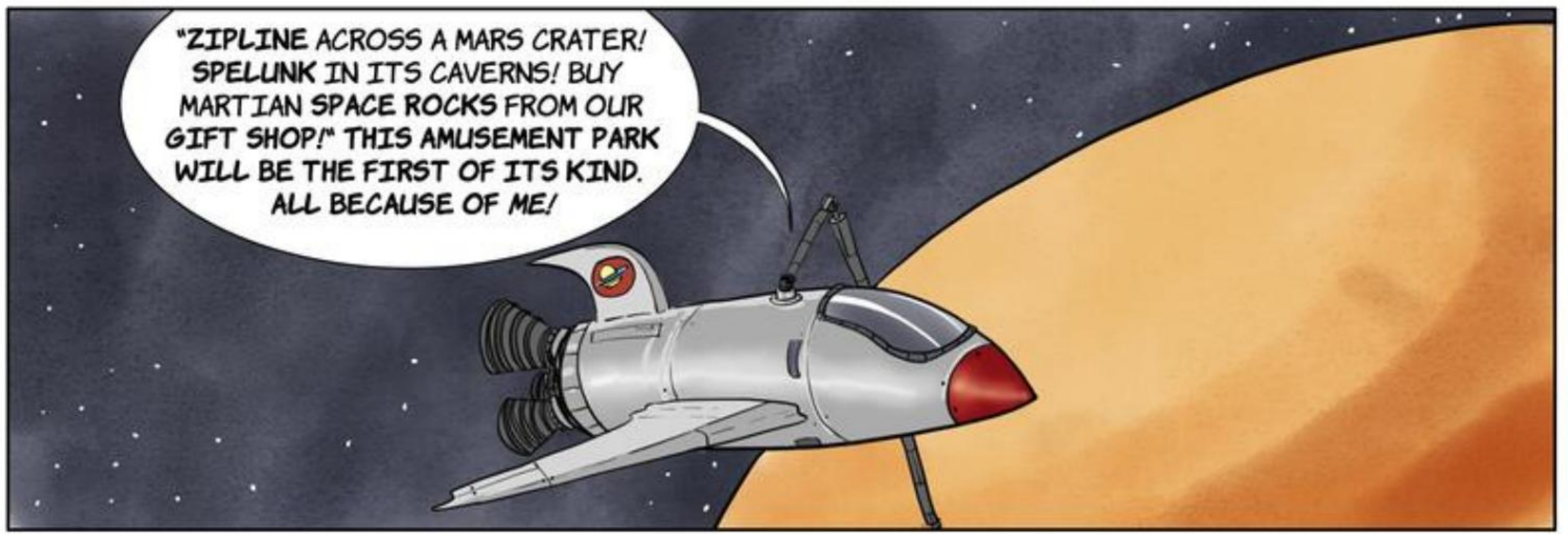
MOSA MACK AND THE

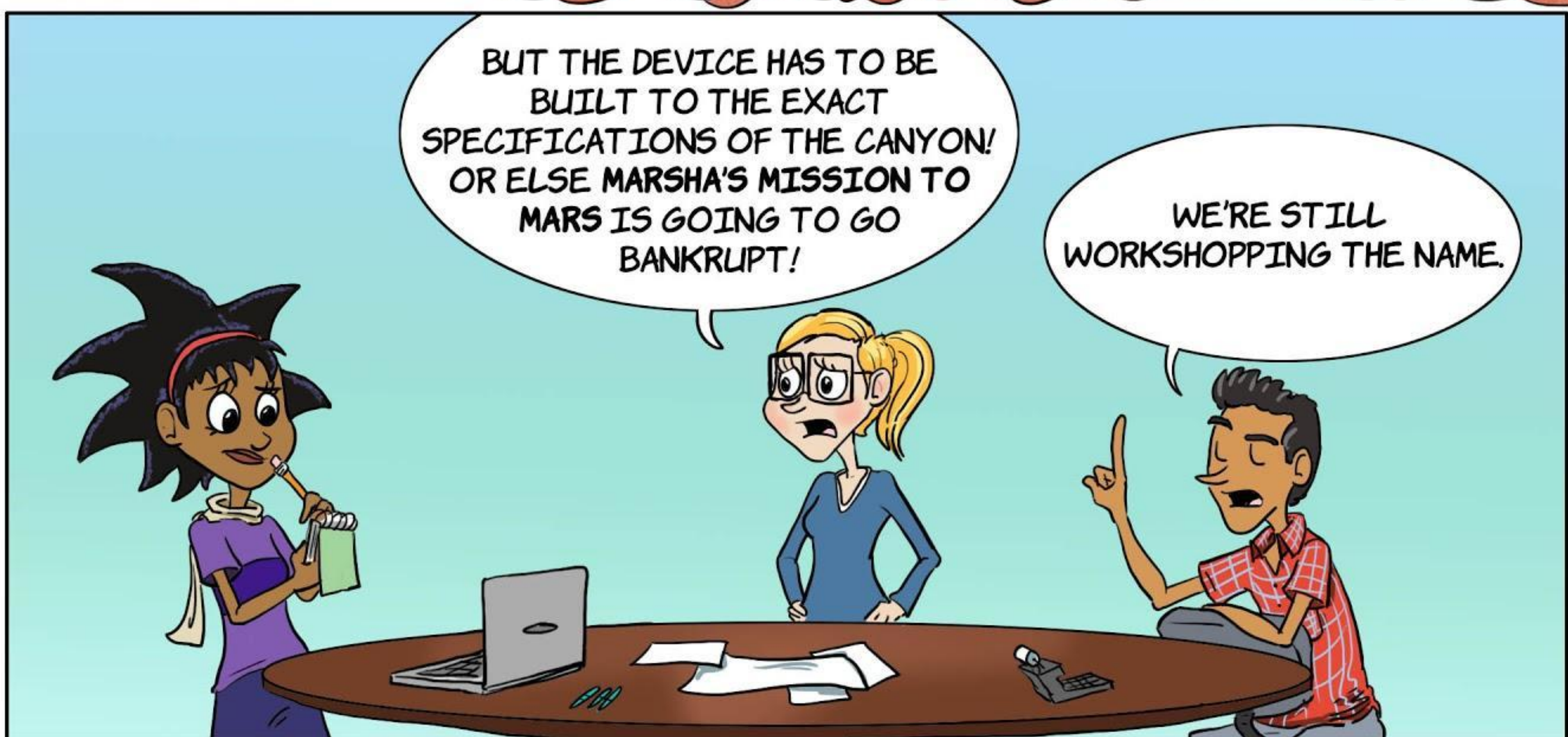
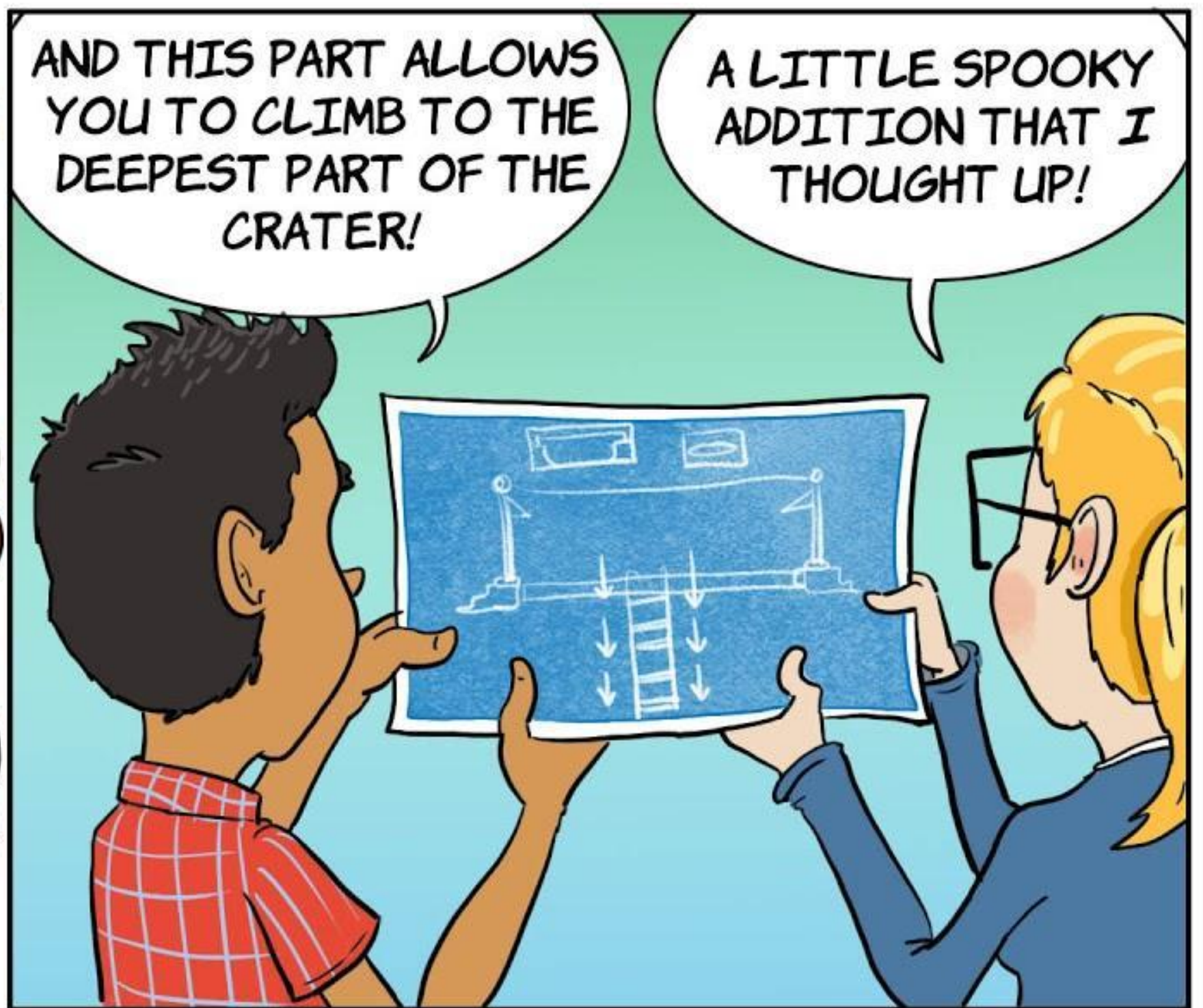
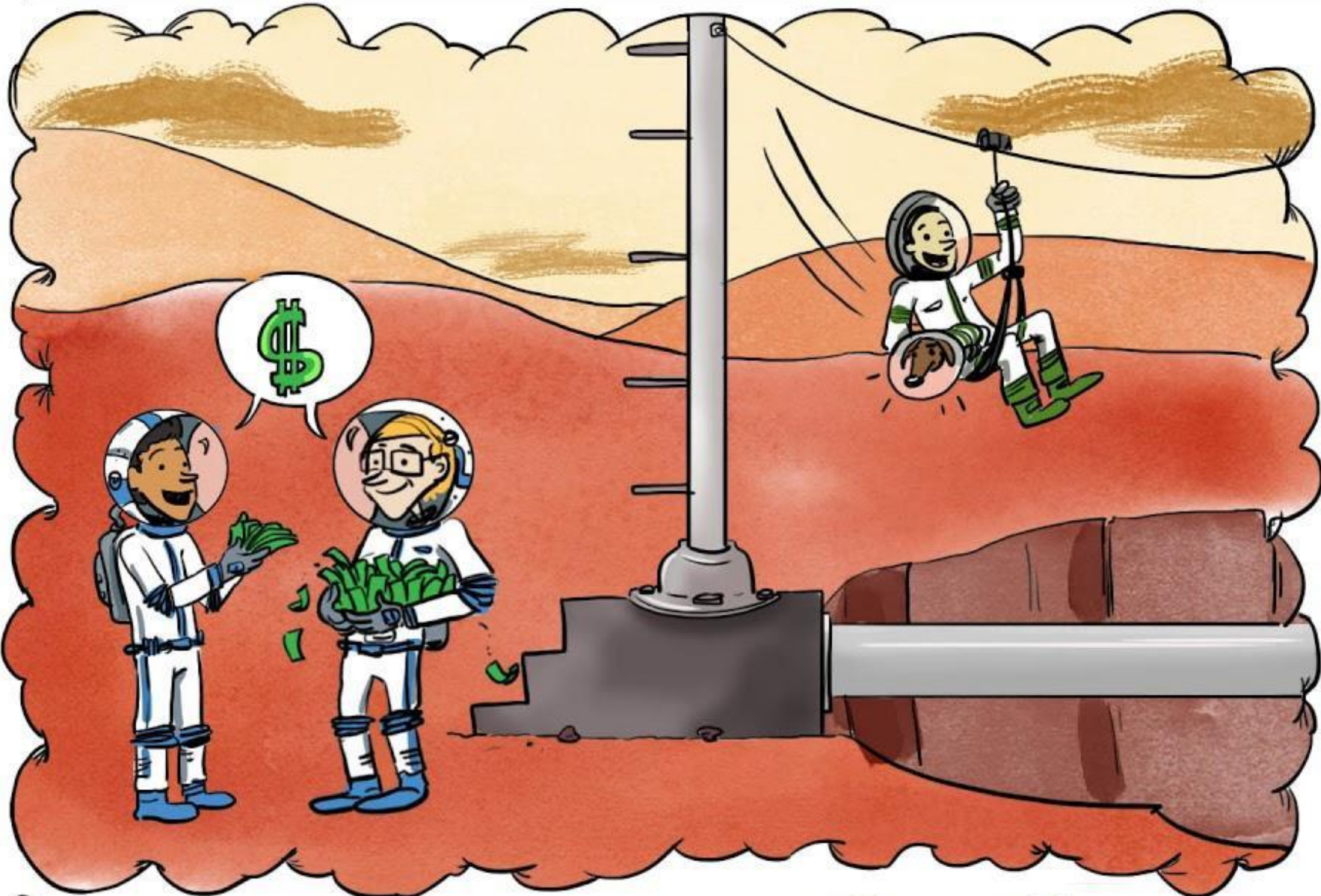
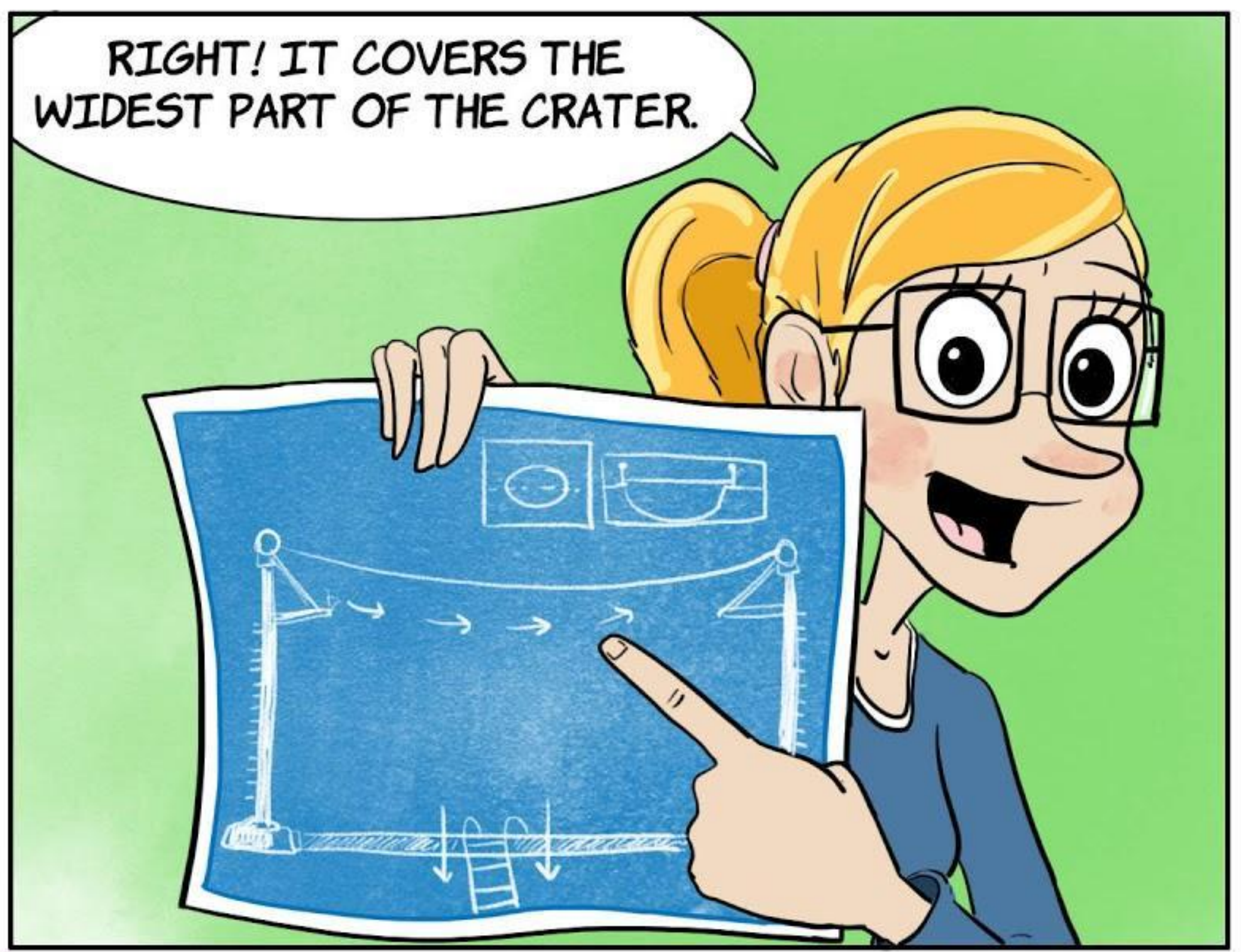


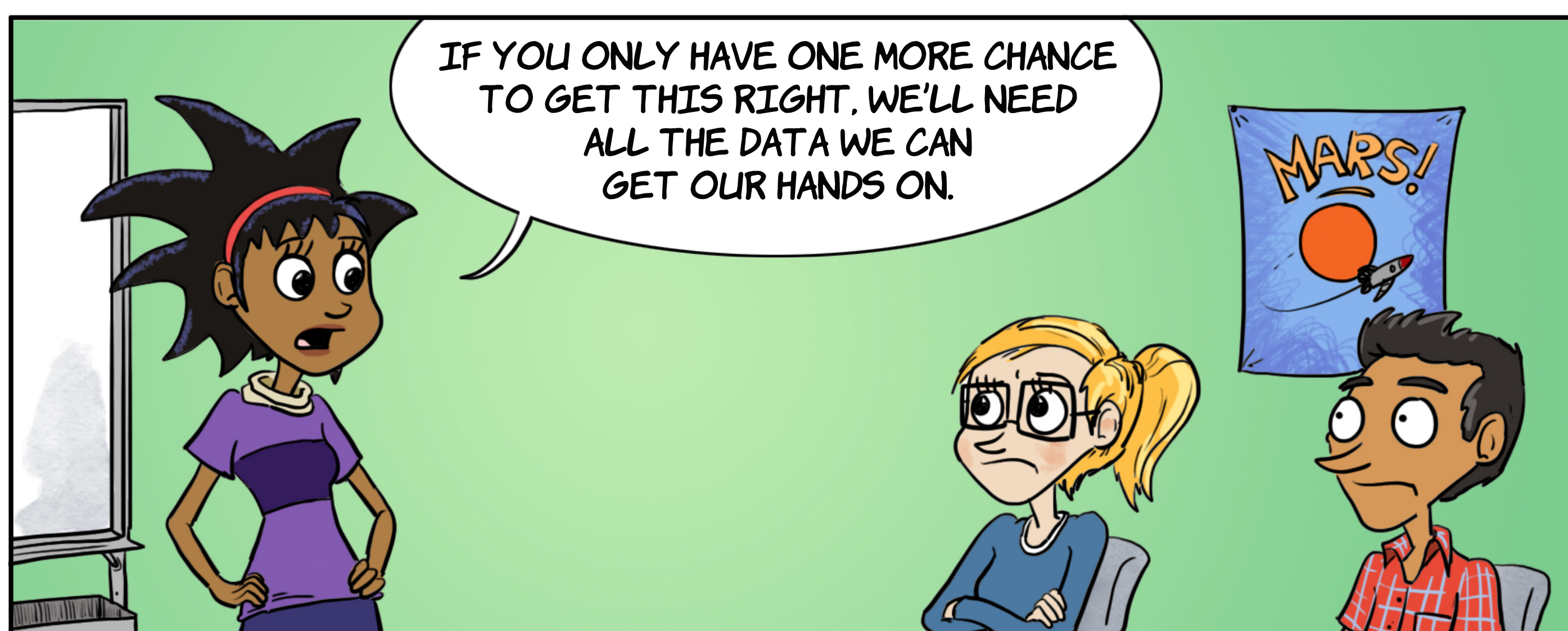
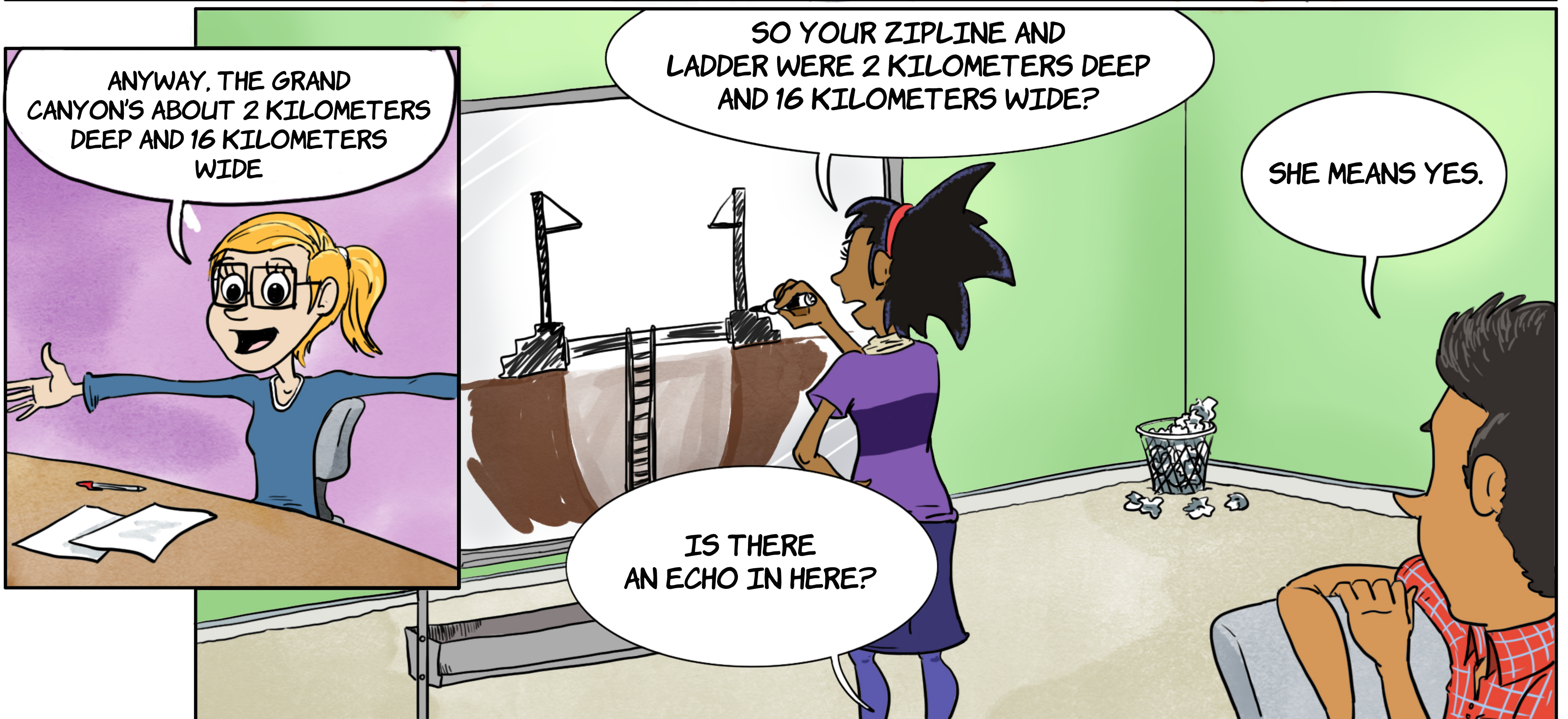
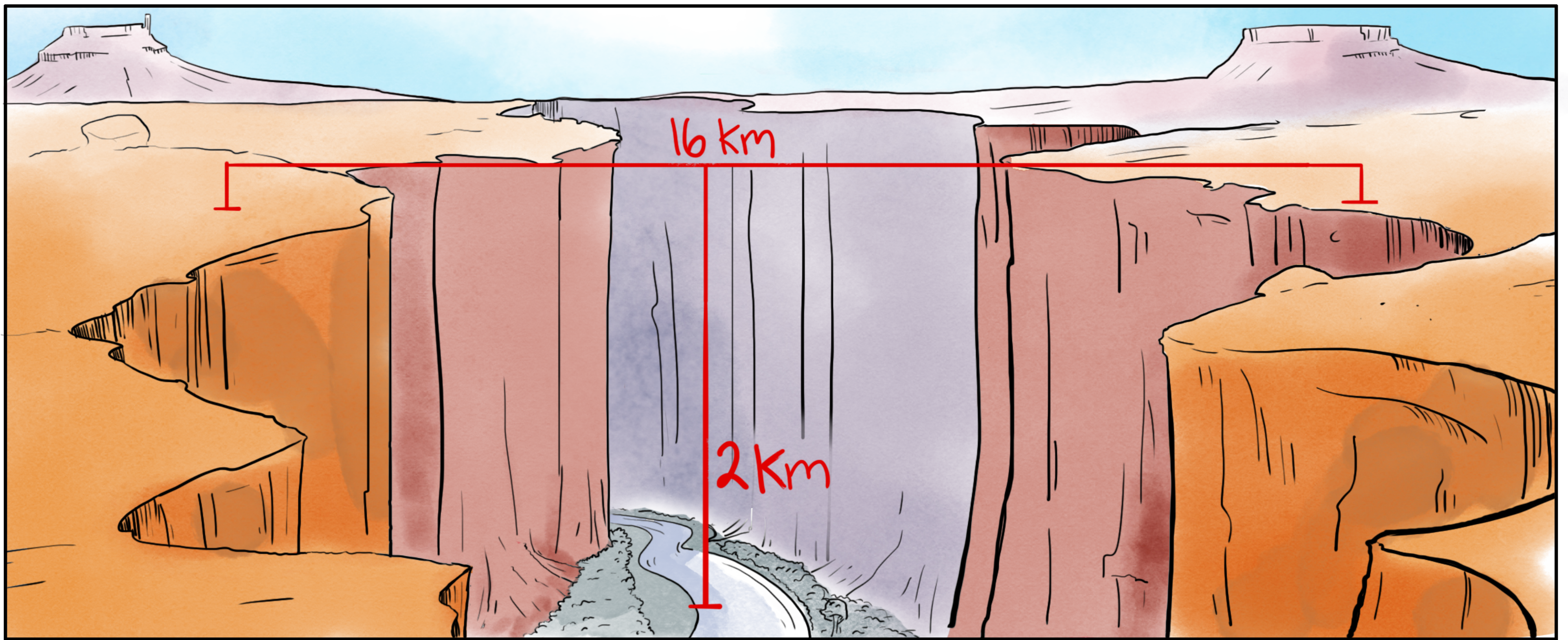
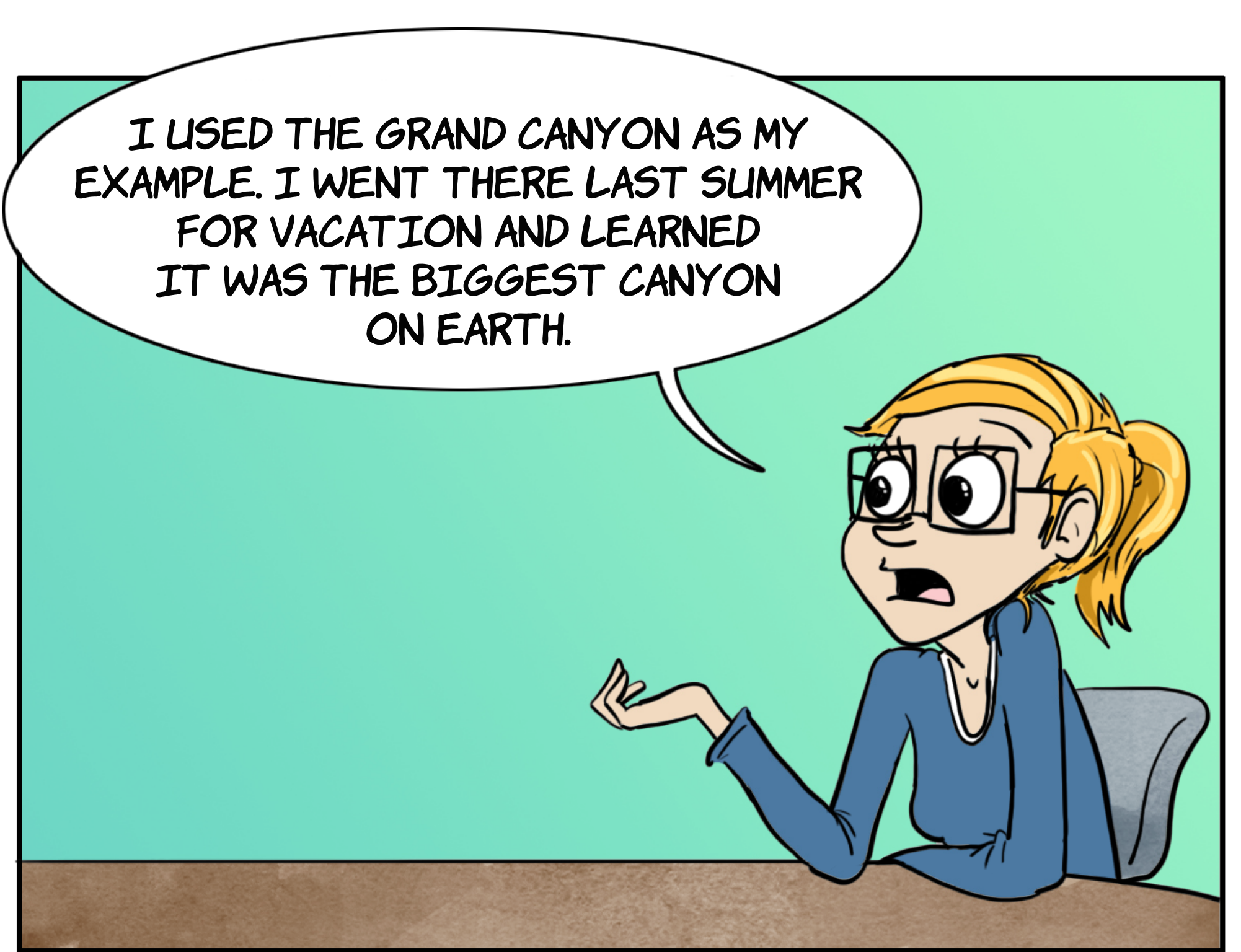
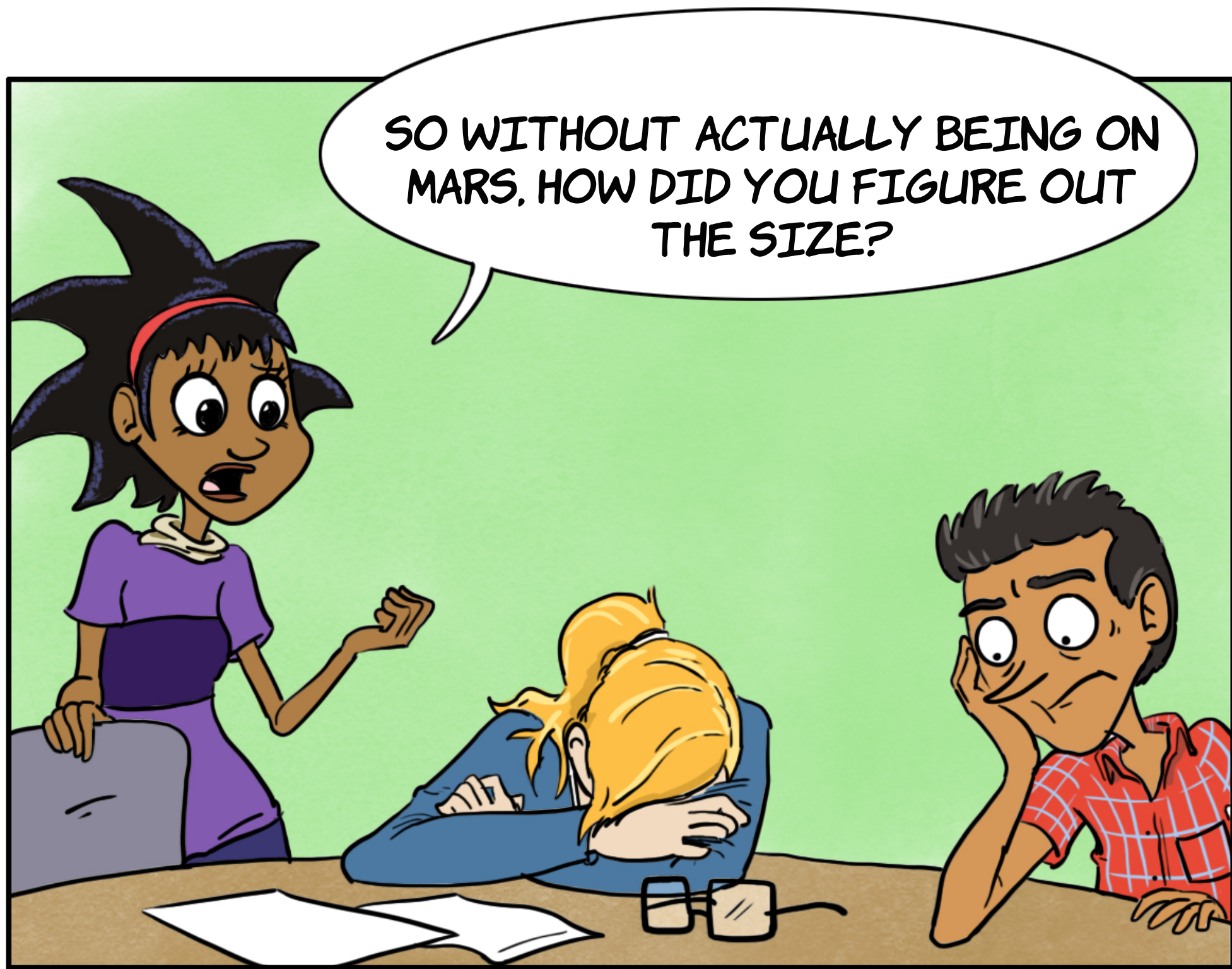
MARSHA^{and Wes's} mission to MARS
GRAND OPENING!!!



MARTIAN CANYON CONUNDRUM







MEANWHILE, AT THE APPLIED SCIENCES MUSEUM...

LEARN ABOUT PHOTOGRAPHY

GAAA!

FLASH

WHOA...

GALLERY of TECHNICAL DRAWING

Models & Maquettes

BACK AT THE PLANNING ROOM

MARS DIDN'T SEEM THIS SMALL WHEN I WAS THERE LAST!

IT'S NOT ACTUALLY THAT SMALL, IT'S JUST A MODEL.

RIGHT RIGHT. I KNEW THAT. OBVIOUSLY.

1cm=1km
TAKEN FROM BROOKLYN NY.

MARS. HUH? NEVER BEEN. MUST BE NEAR NEW YORK. I'LL CHECK IT OUT NEXT WEEK.

BILLY, MARS IS 225 MILLION KILOMETERS AWAY.

?!

THEN HOW IS THIS PHOTO SO CLOSE UP?!

IT LOOKS LIKE IT WAS SHOT FROM A TELESCOPE.

PERFECT. THIS CRATER IS ABOUT 1 CENTIMETER DEEP. HALF THE PROBLEM SOLVED!

IF IT WAS 1 CENTIMETER DEEP, THEN OUR LADDER SHOULD'VE TOTALLY BEEN TALL ENOUGH! BUT IT WASN'T. OH WILL THIS MYSTERY EVER BE SOLVED??



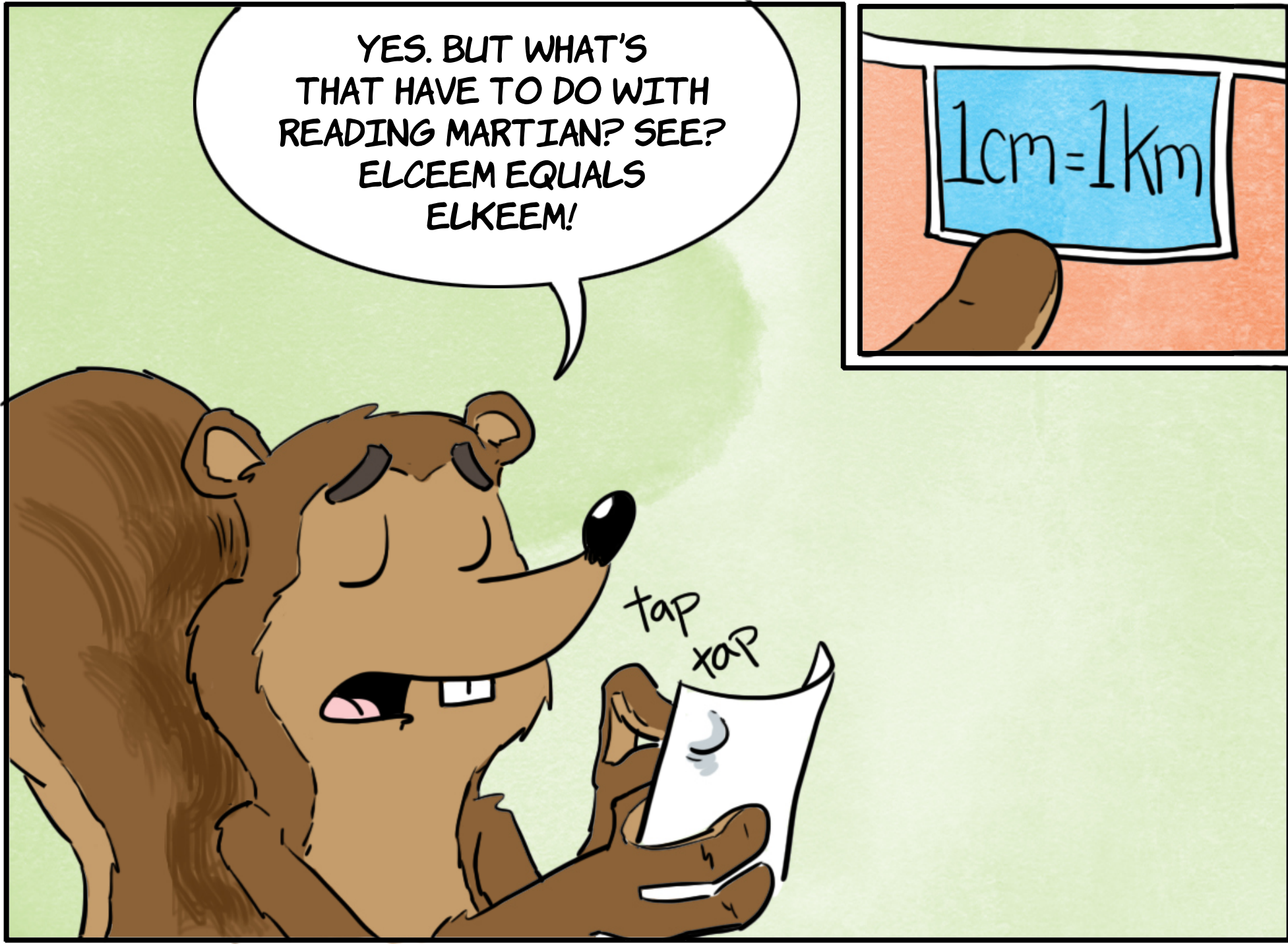
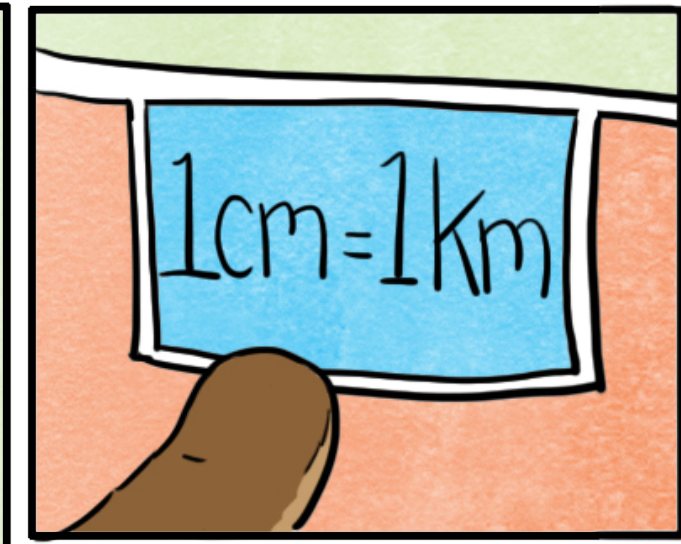
PROBABLY NOT! OH WELL, AT LEAST I LEARNED SOME MARTIAN! "ELCEEM EQUALS ELKEEM."



UH, BILLY? HAVE YOU BEEN LICKING POISON TREE FROGS AGAIN?

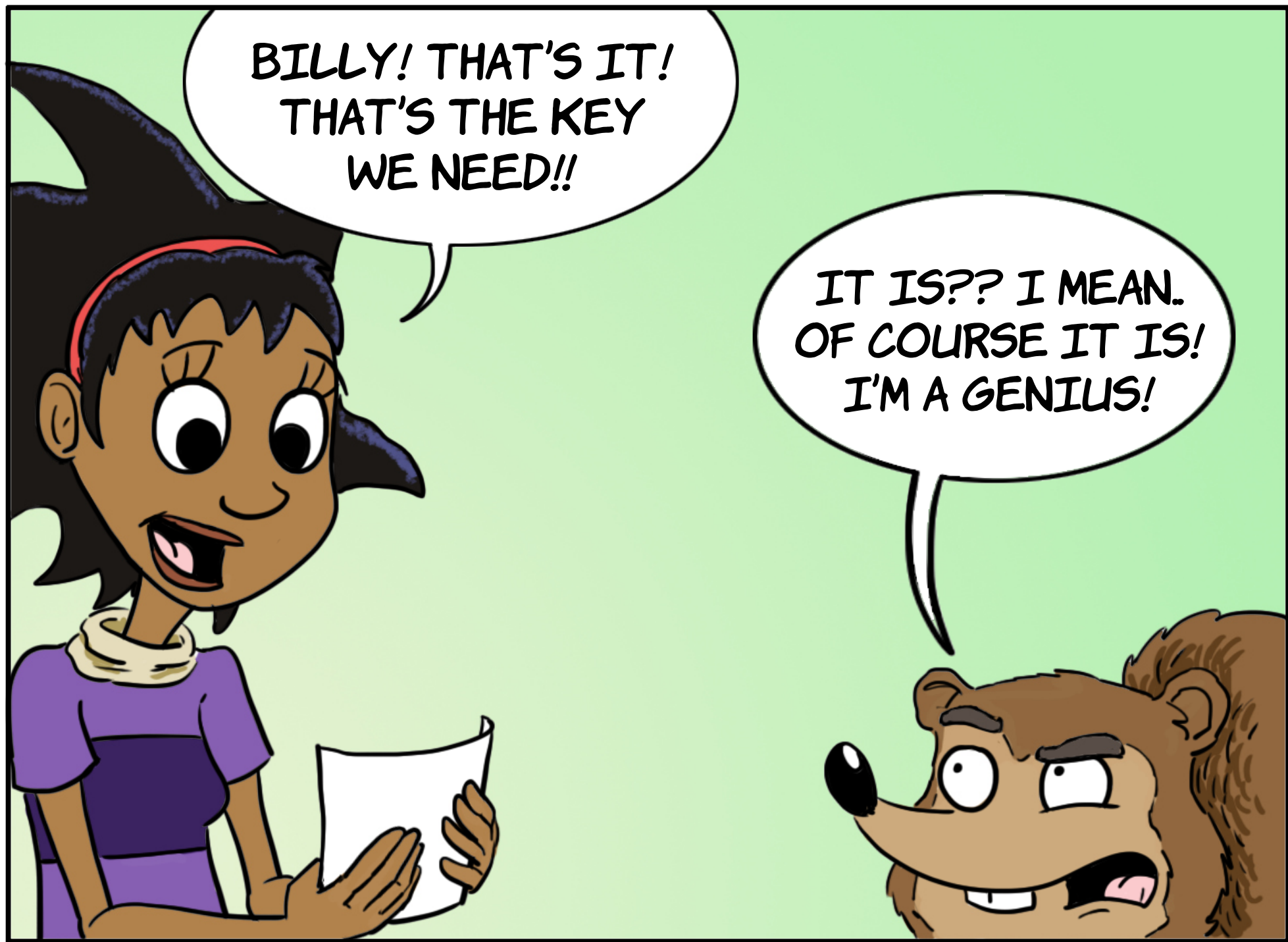


YES. BUT WHAT'S THAT HAVE TO DO WITH READING MARTIAN? SEE? ELCEEM EQUALS ELKEEM!



BILLY! THAT'S IT! THAT'S THE KEY WE NEED!!

IT IS?? I MEAN. OF COURSE IT IS! I'M A GENIUS!



IT'S A SCALE! IT'S SAYING 1 CENTIMETER ON THIS RULER MEANS 1 KILOMETER IN REAL LIFE!

WOW! SCIENCE CAN FIGURE ANYTHING OUT! EXCEPT WHY MY DRYER KEEPS EATING MY LEFT SOCKS.

