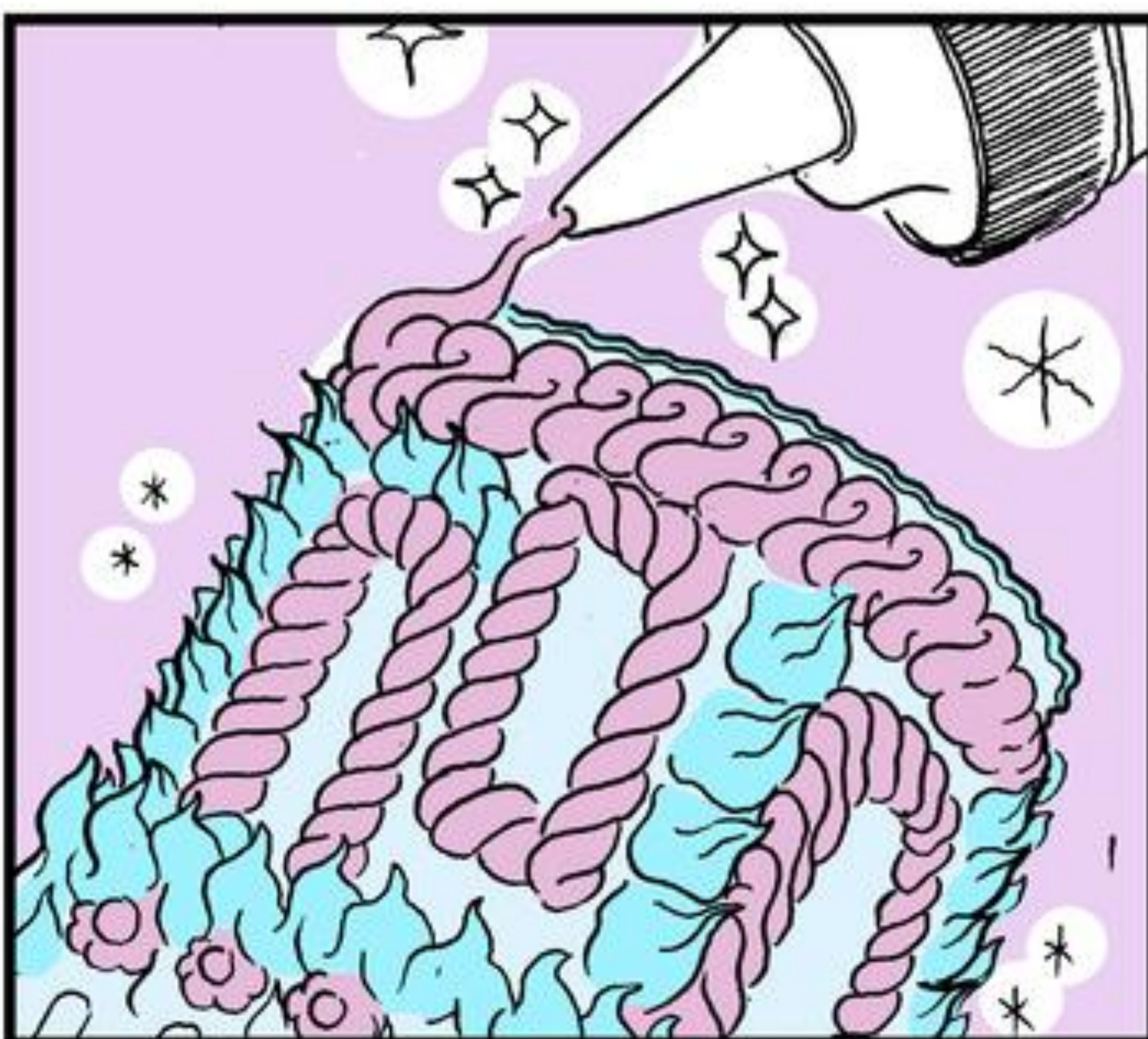
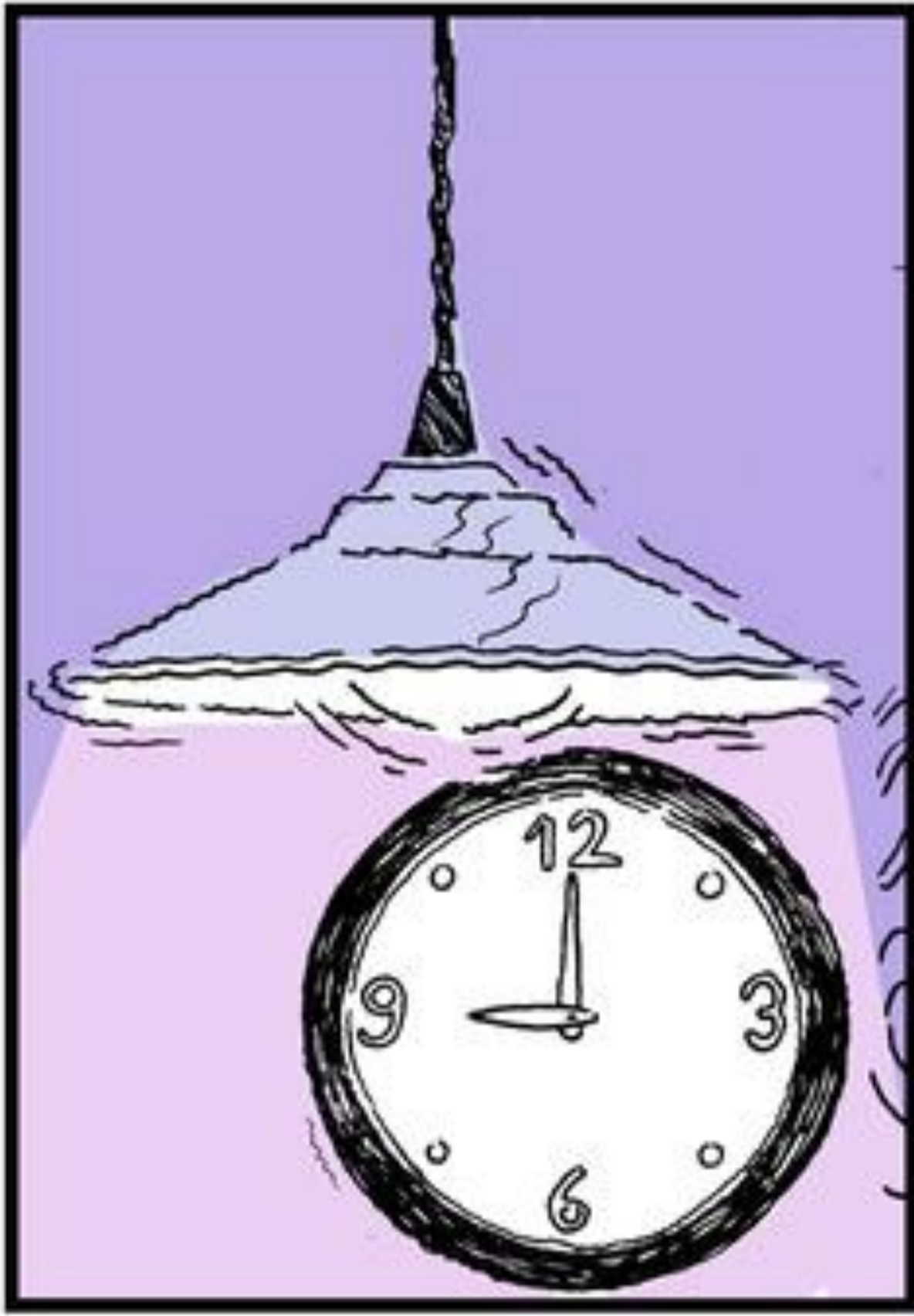


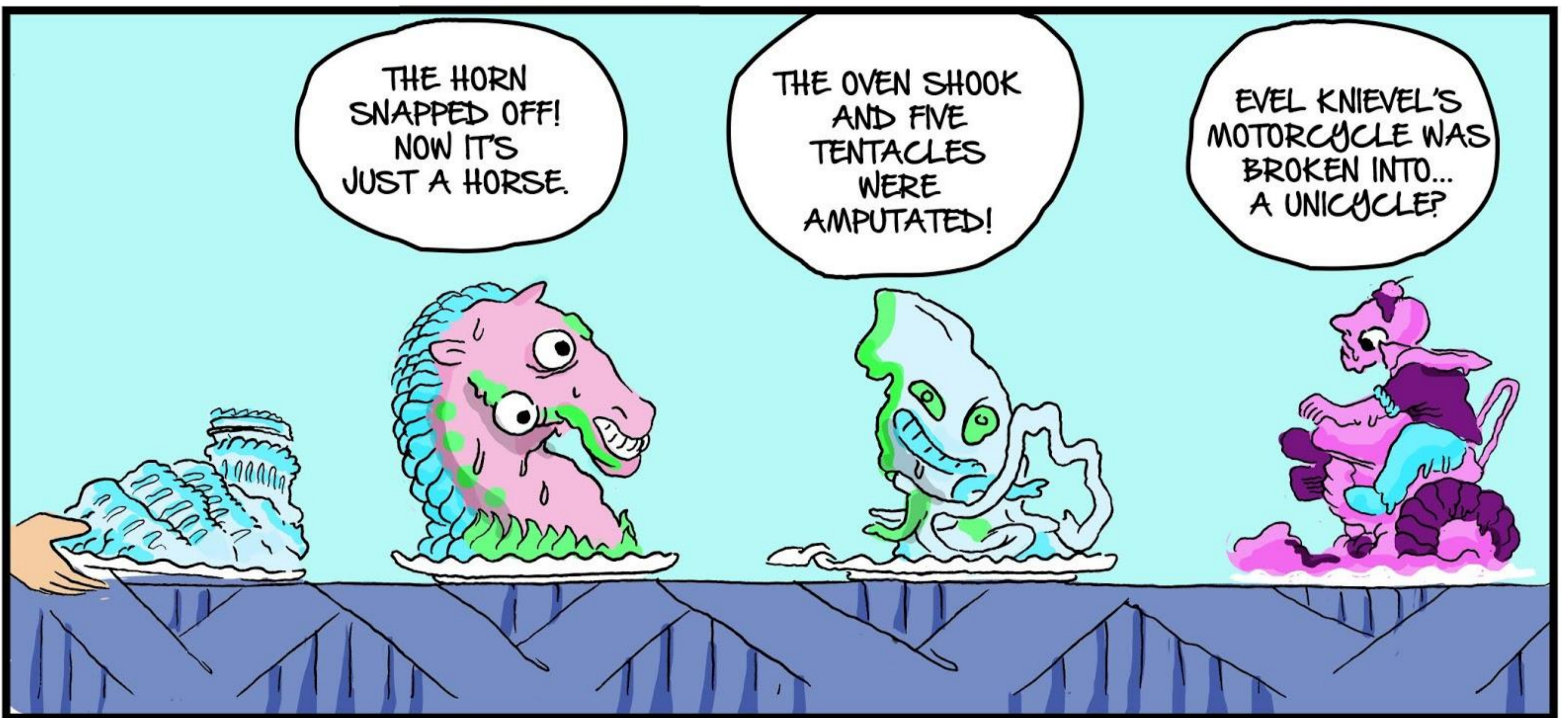
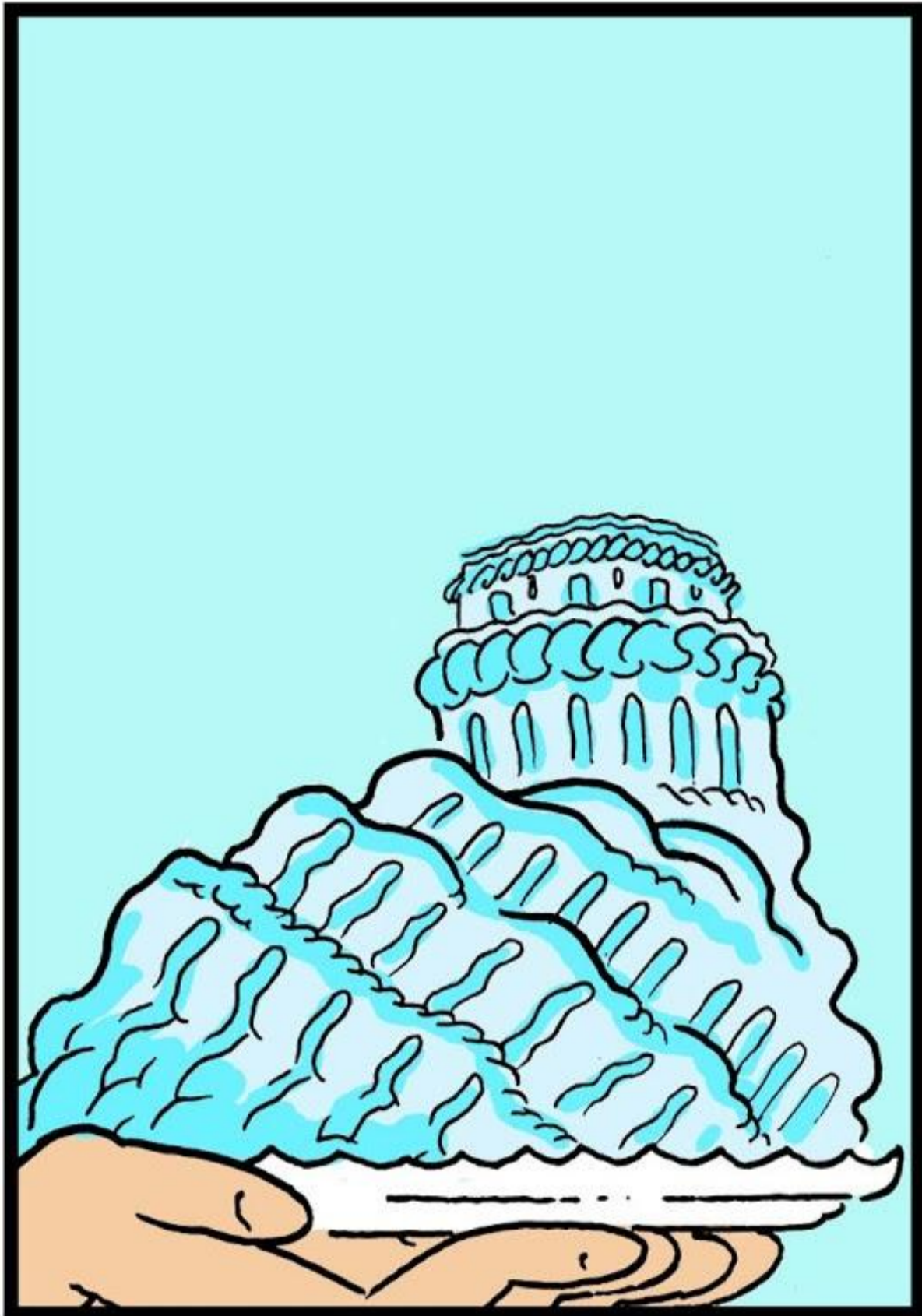


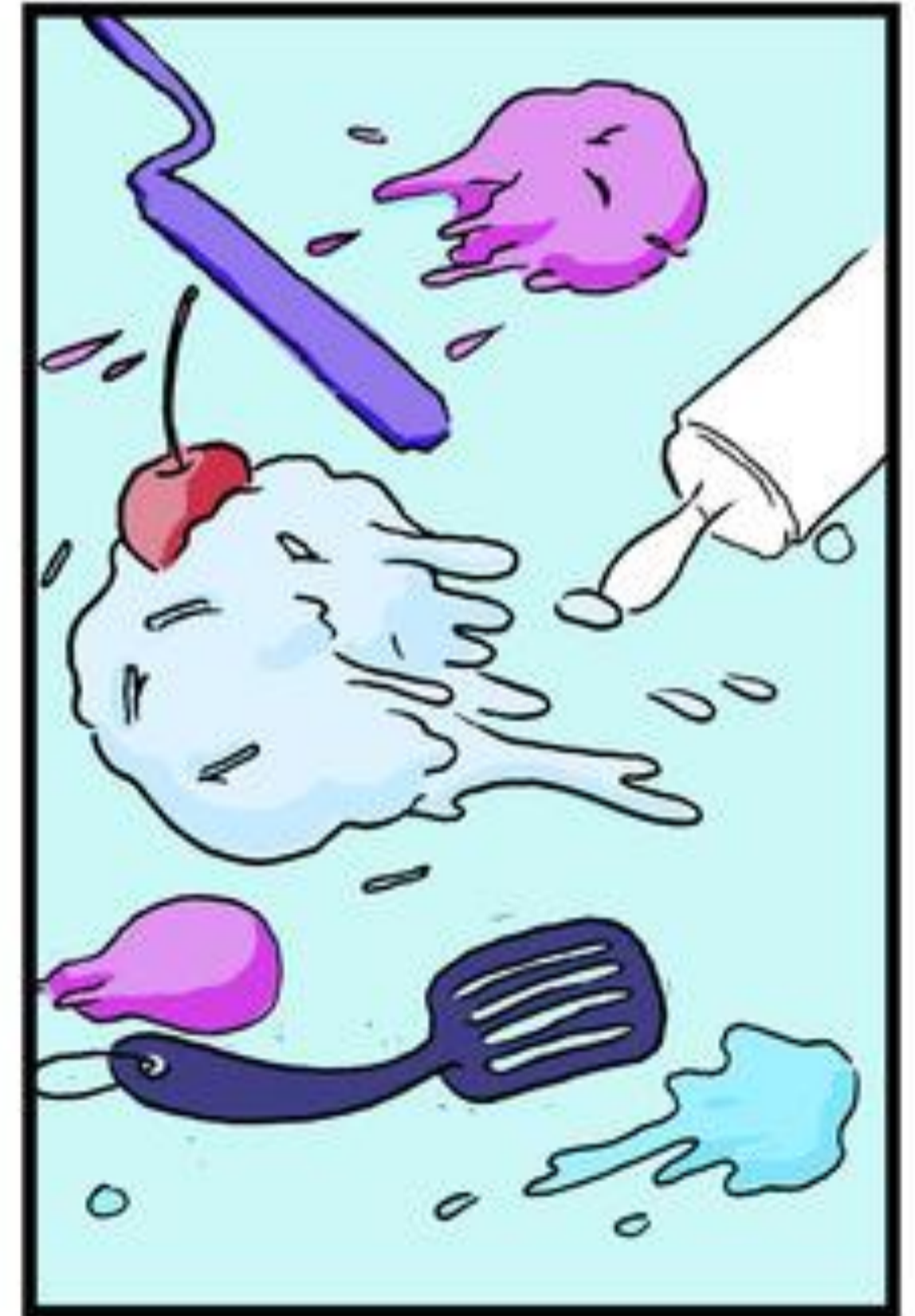
MOSA MACK

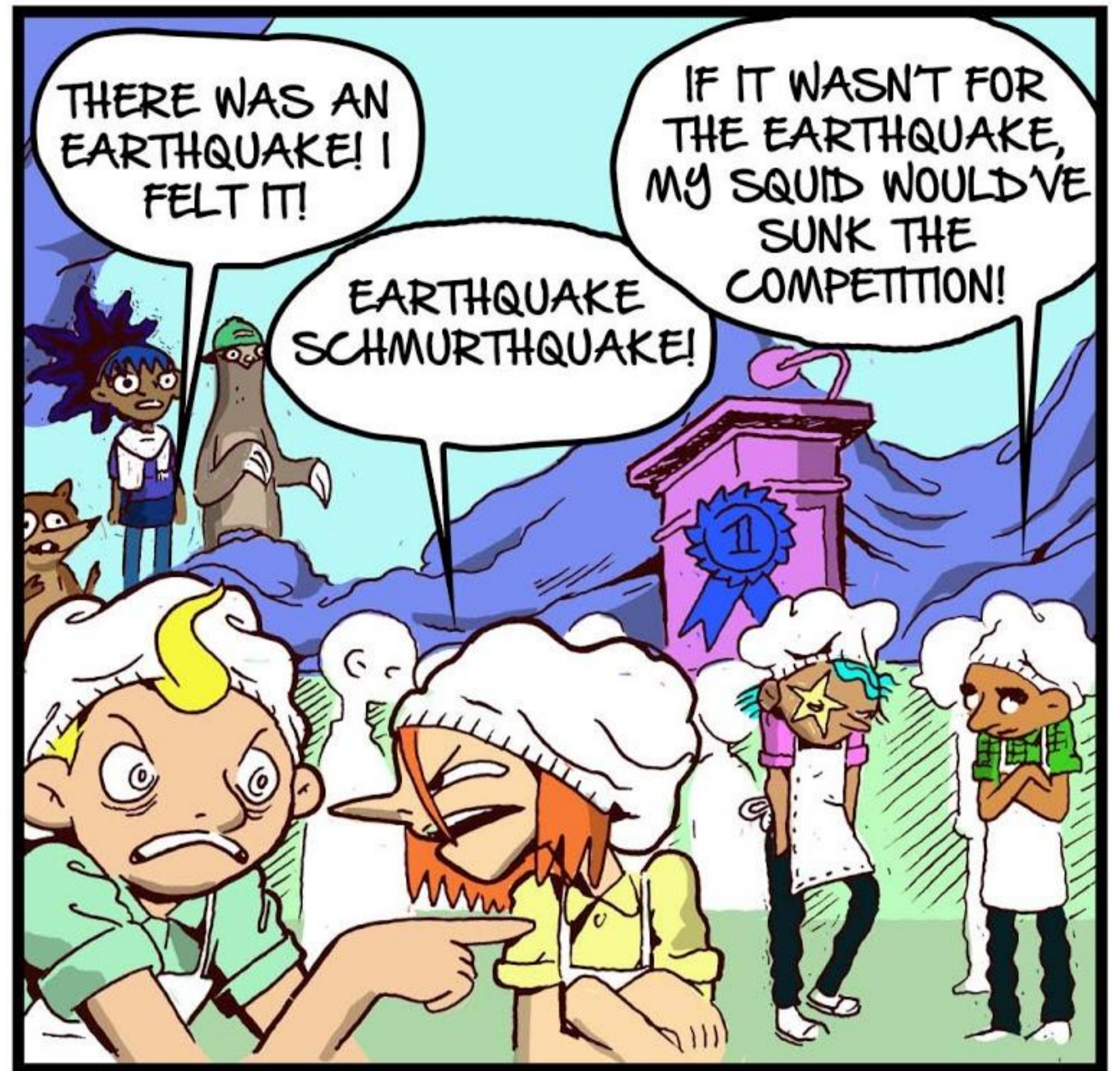
**AND THE CASE OF
THE QUAKIN' CAKES**

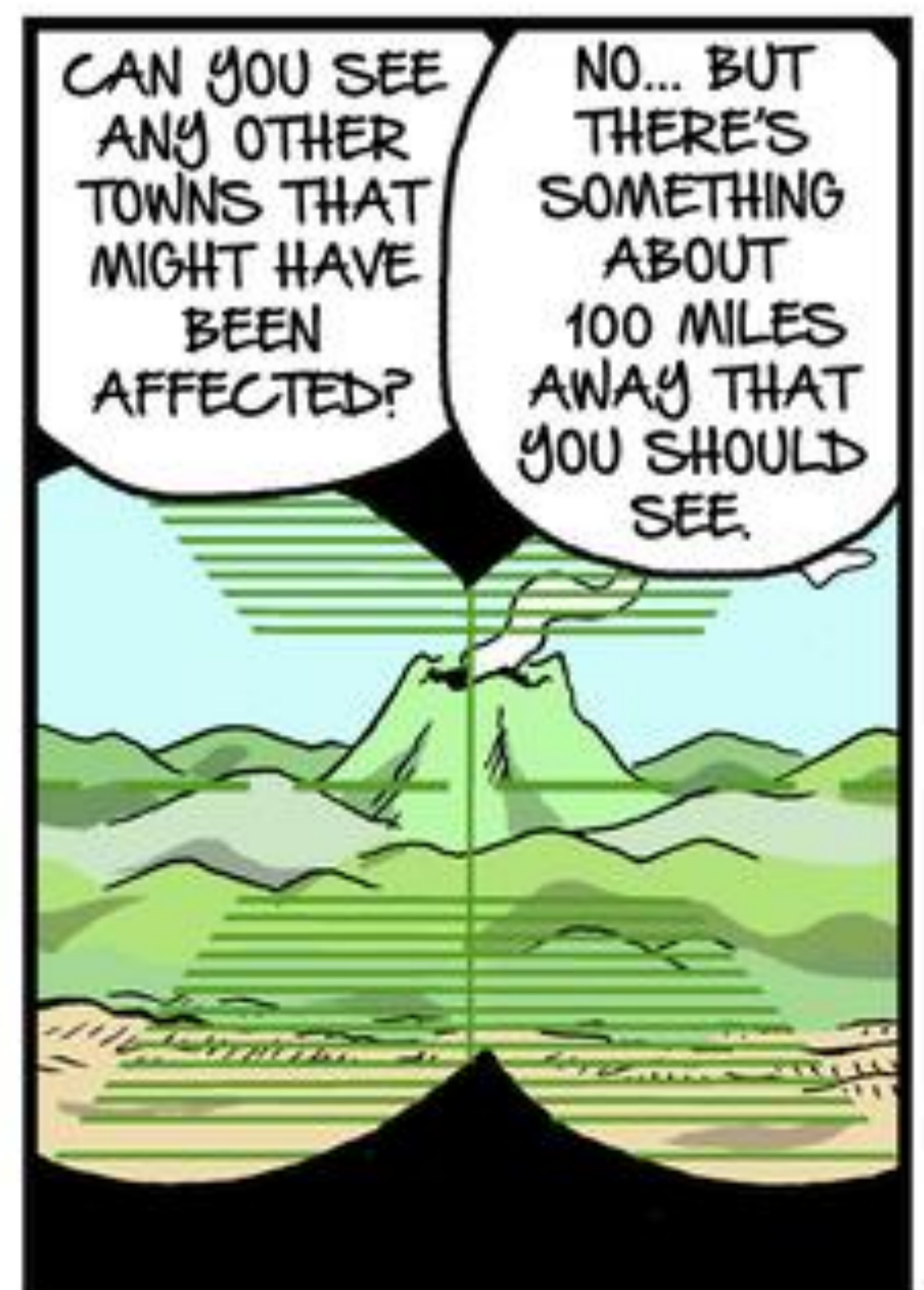
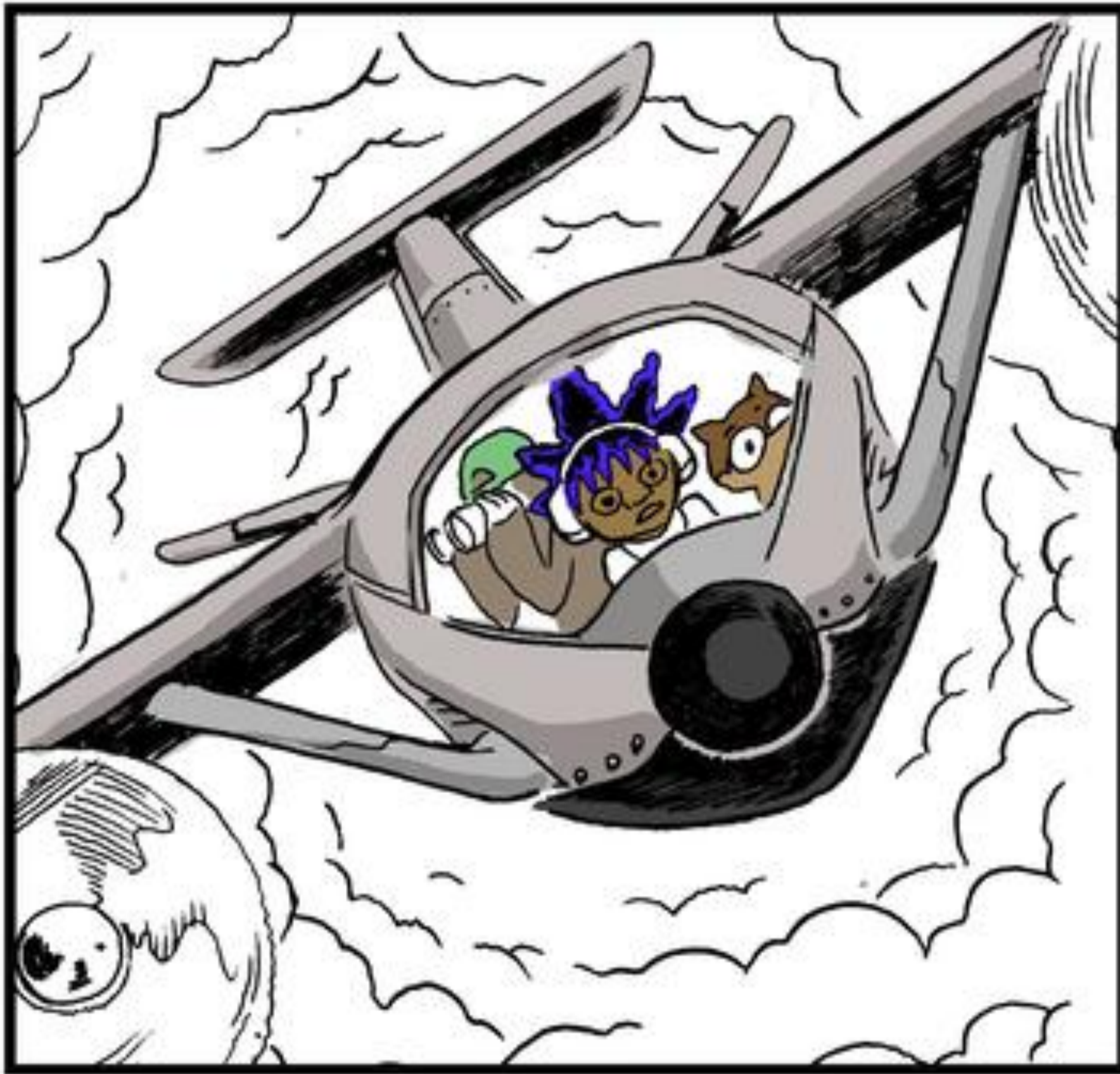


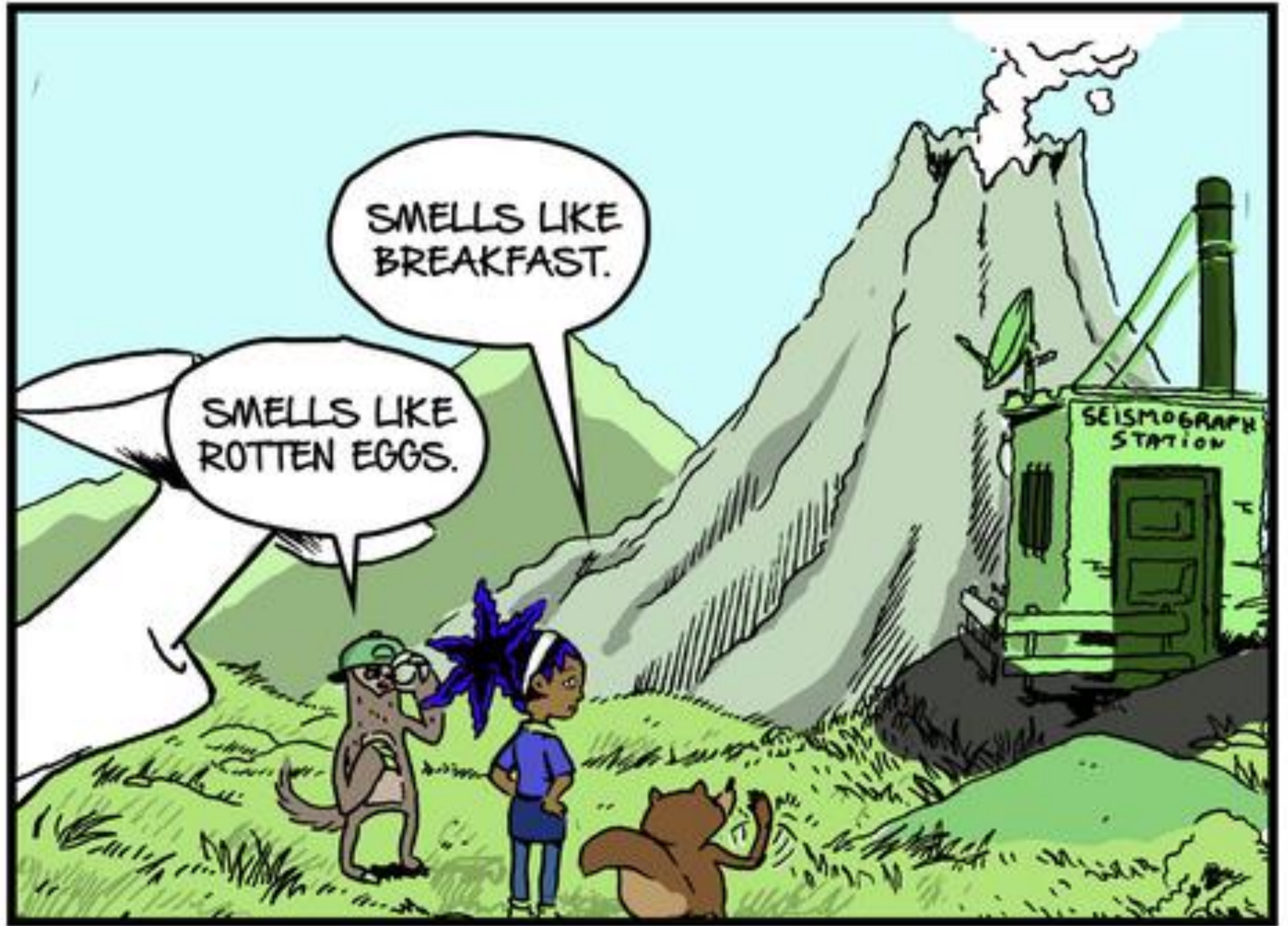












SMELLS LIKE BREAKFAST.

SMELLS LIKE ROTTEN EGGS.



APPETIZING, INDEED!



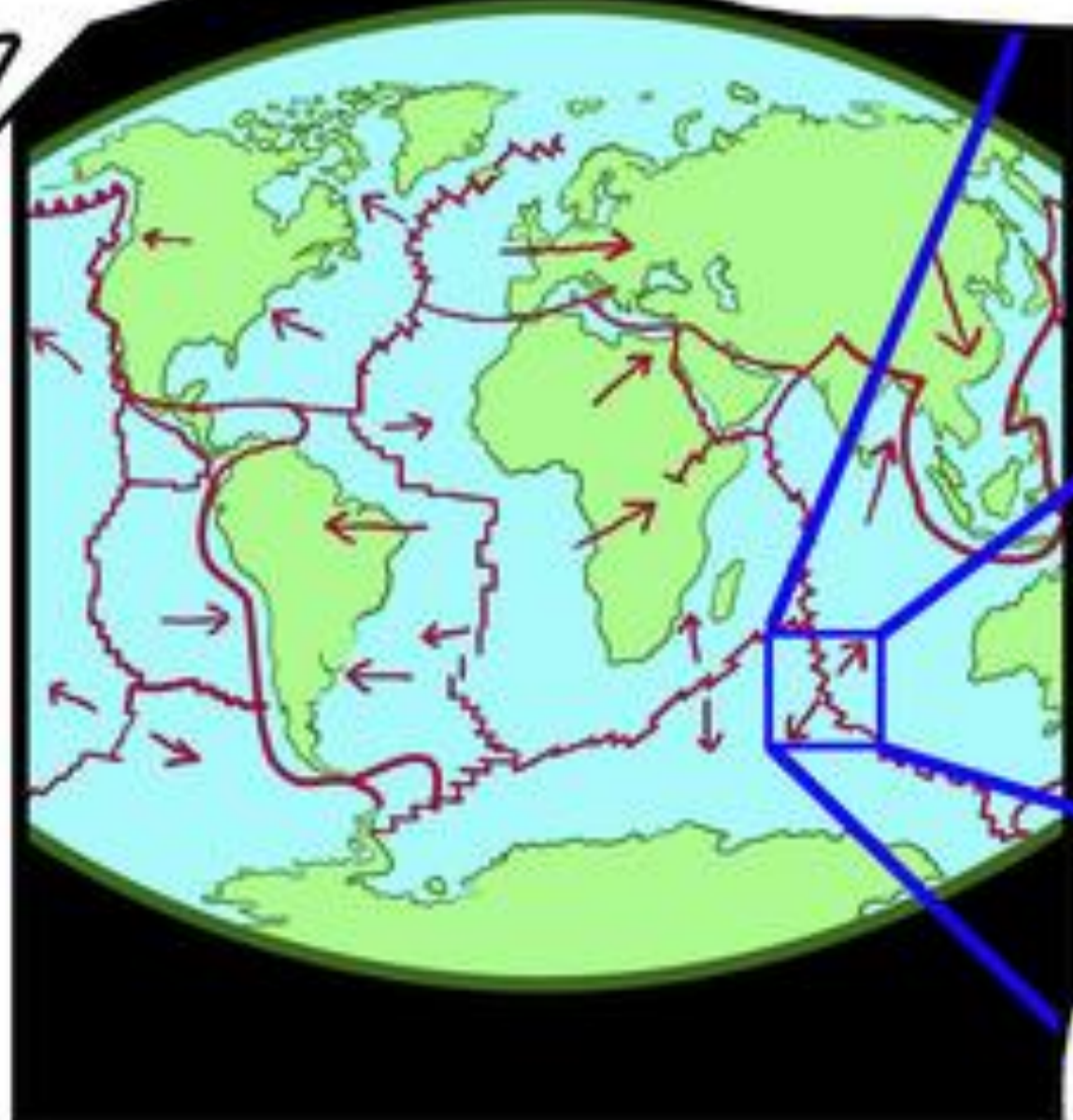
THAT WOULD BE THE SUBLIME MUSK OF MOTHER EARTH. SULFUR.

I'M TRENT THE SCENT O'NEIL, VOLCANOLOGIST, AT YOUR SERVICE.

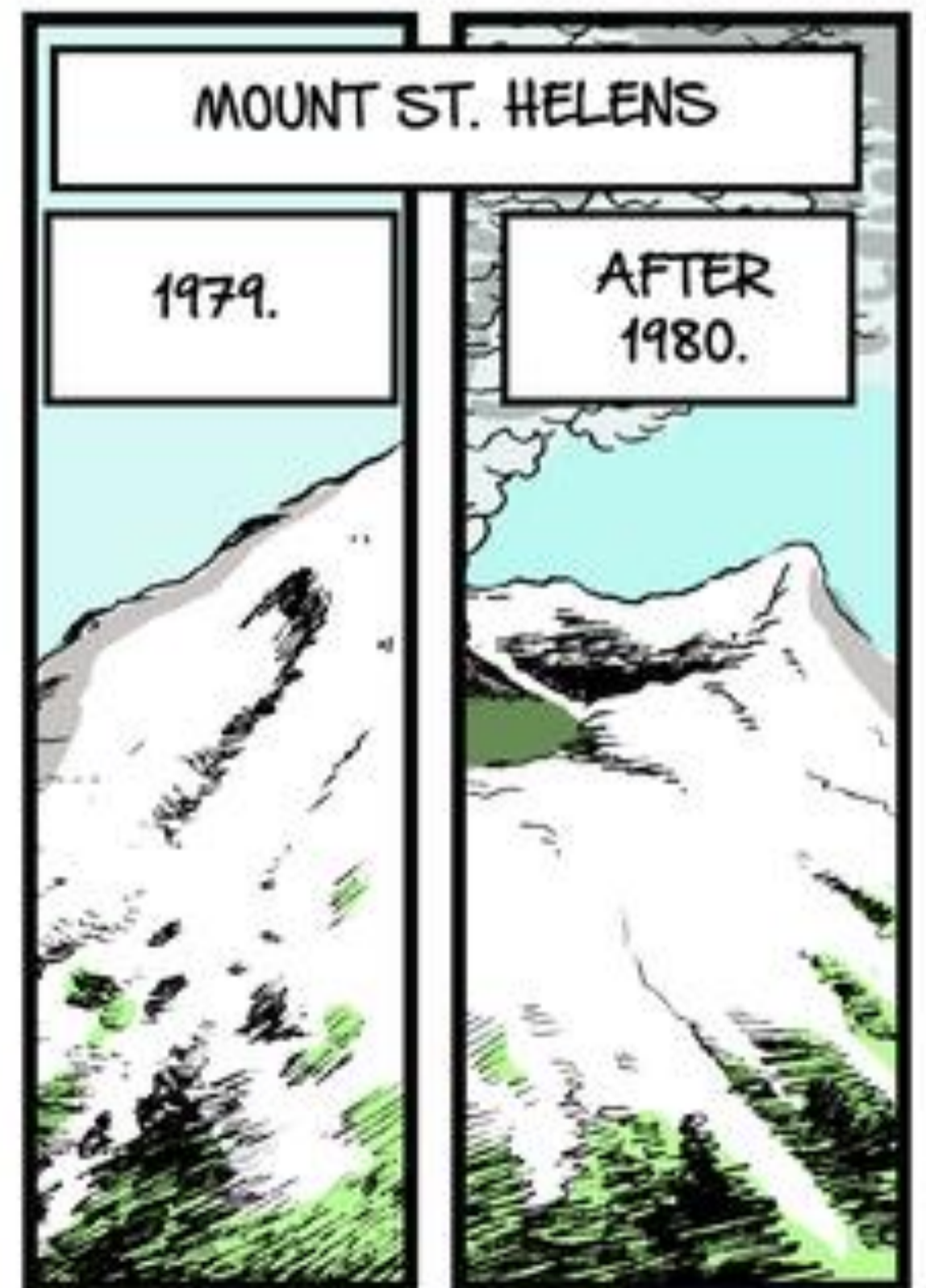
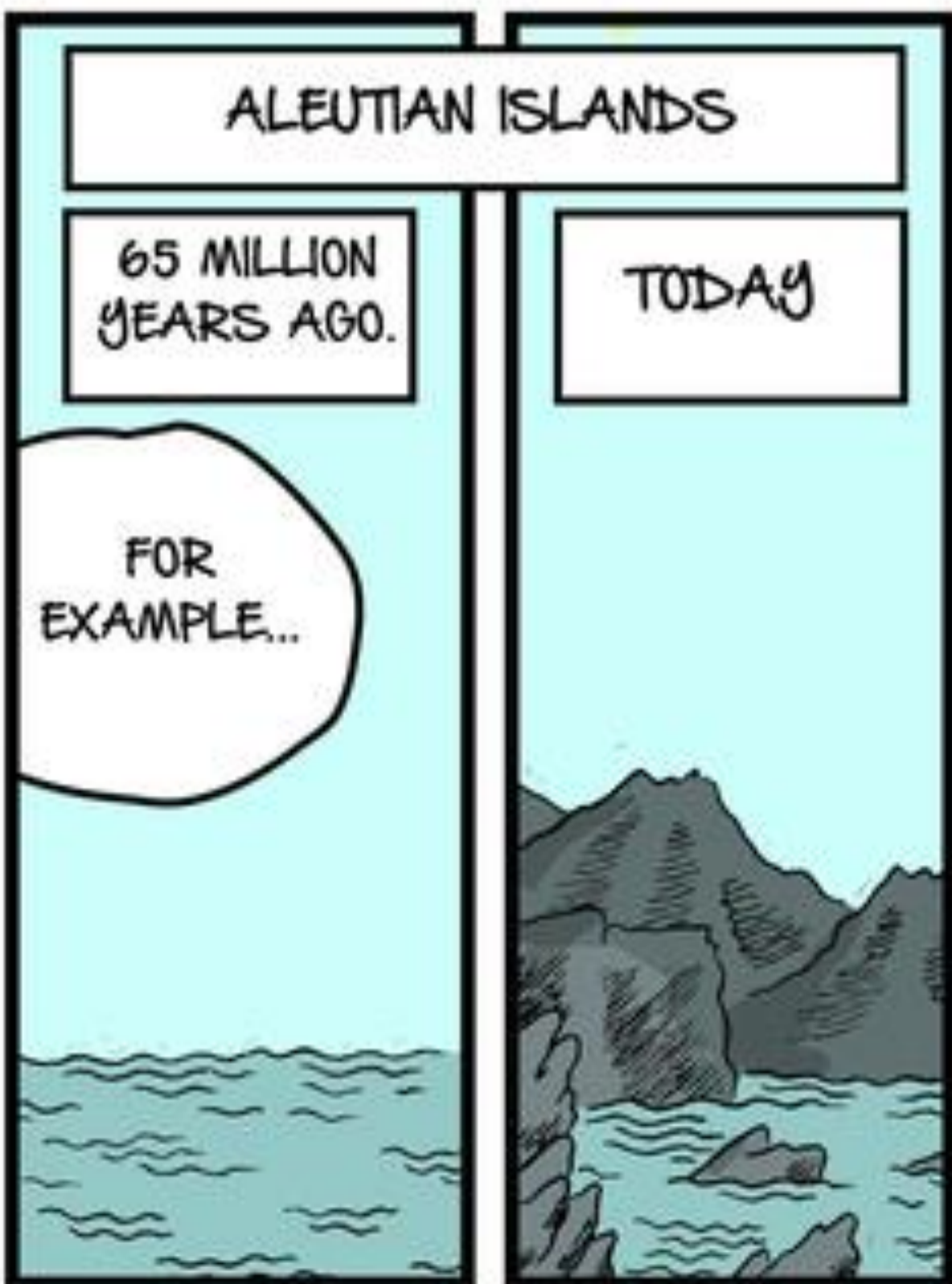
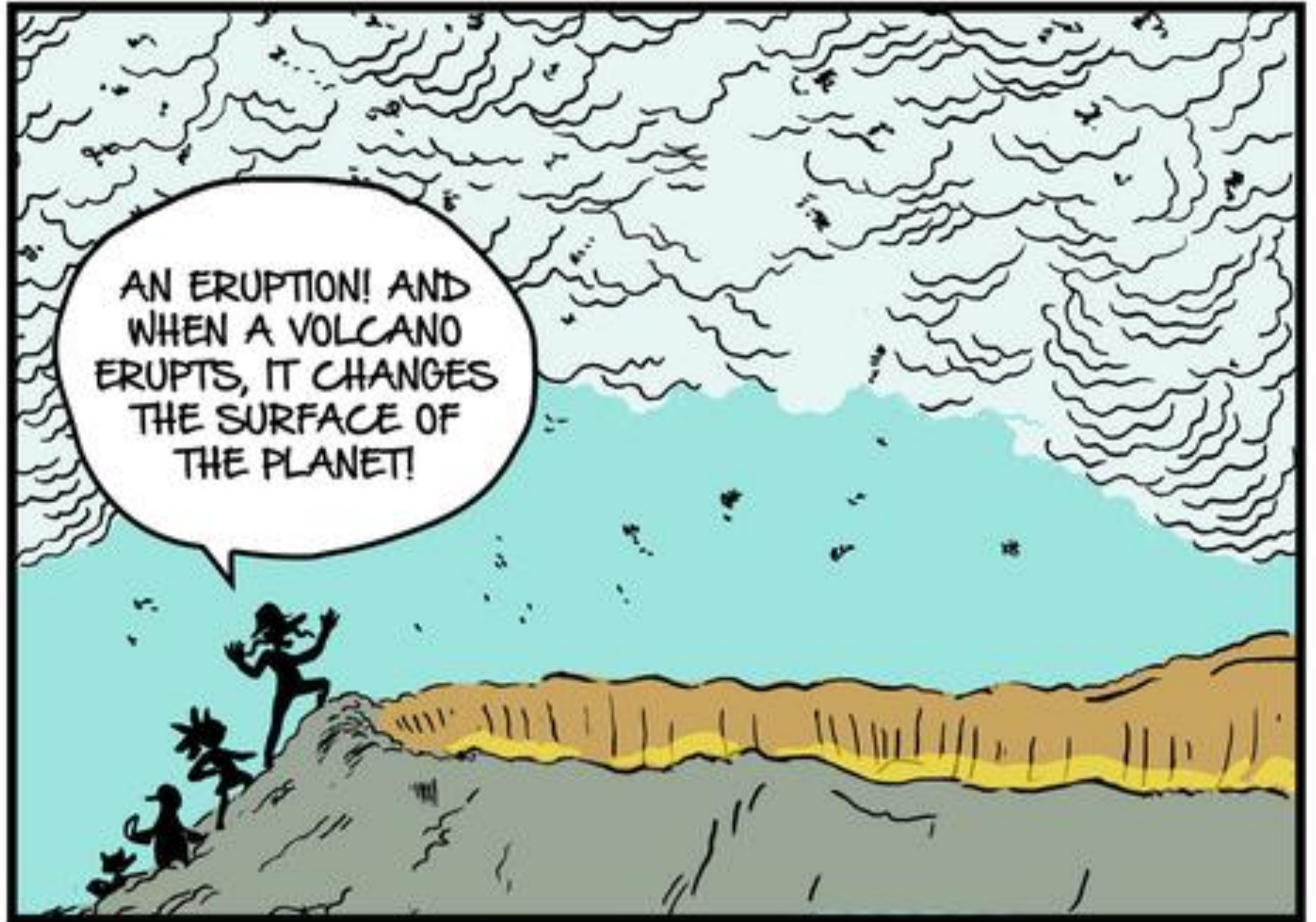
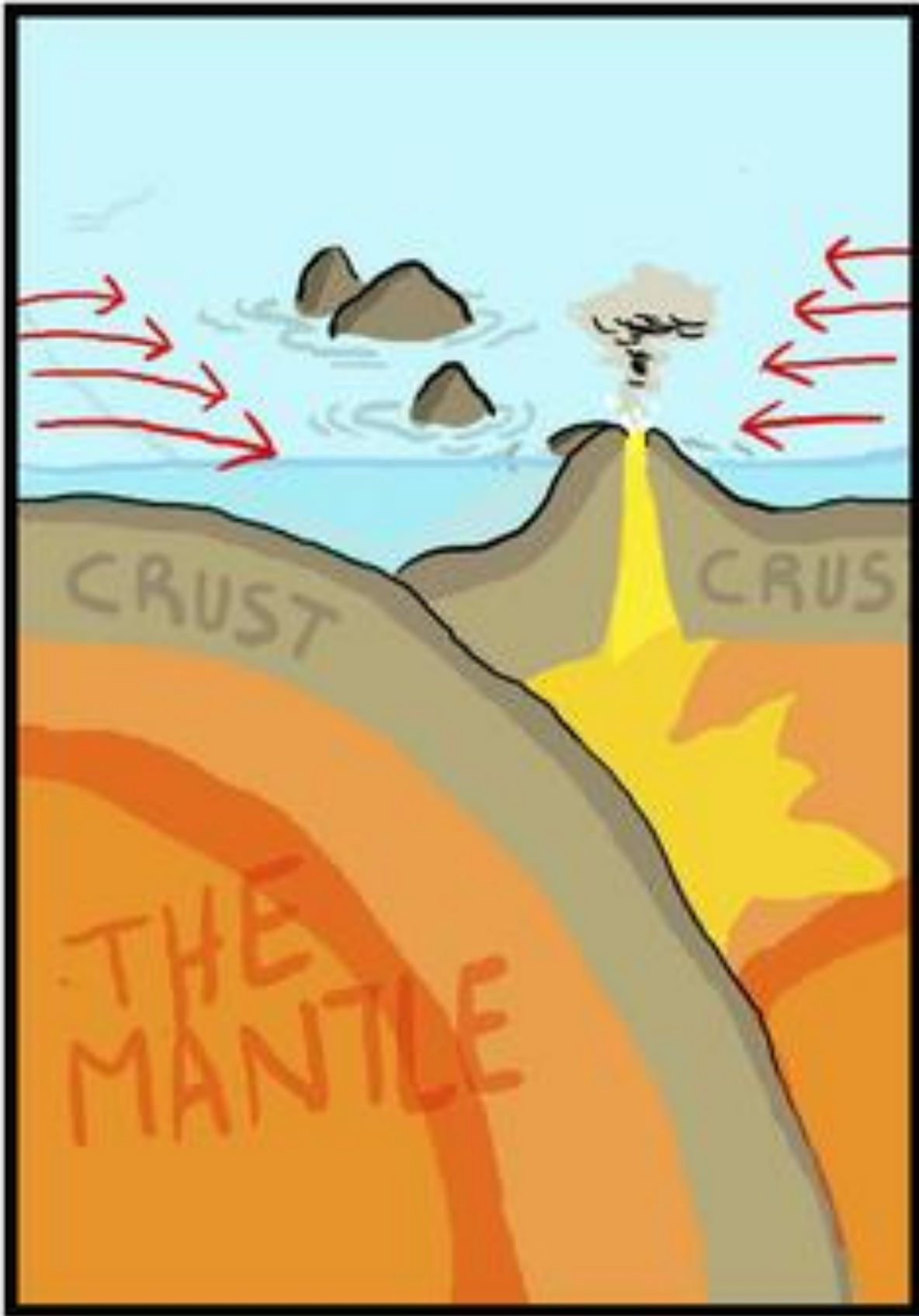
WE'RE TRYING TO FIGURE OUT IF AN EARTHQUAKE STRUCK CAKE COUNTY. A CRACK RUNNING THROUGH TOWN LED US HERE.

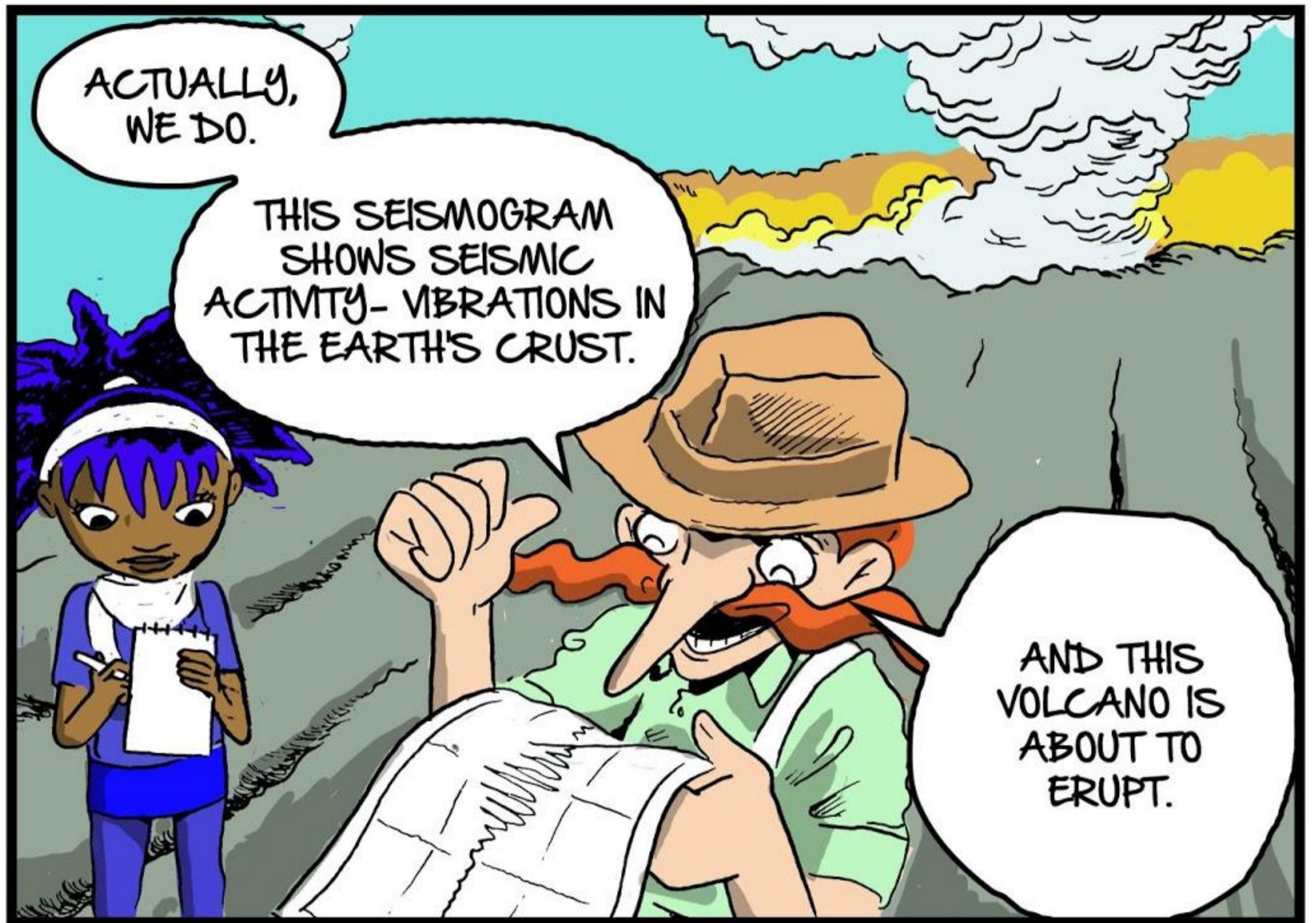
WELL, I'M NO EXPERT ON EARTHQUAKES BUT THAT CRACK IS KNOWN AS A FAULT LINE.

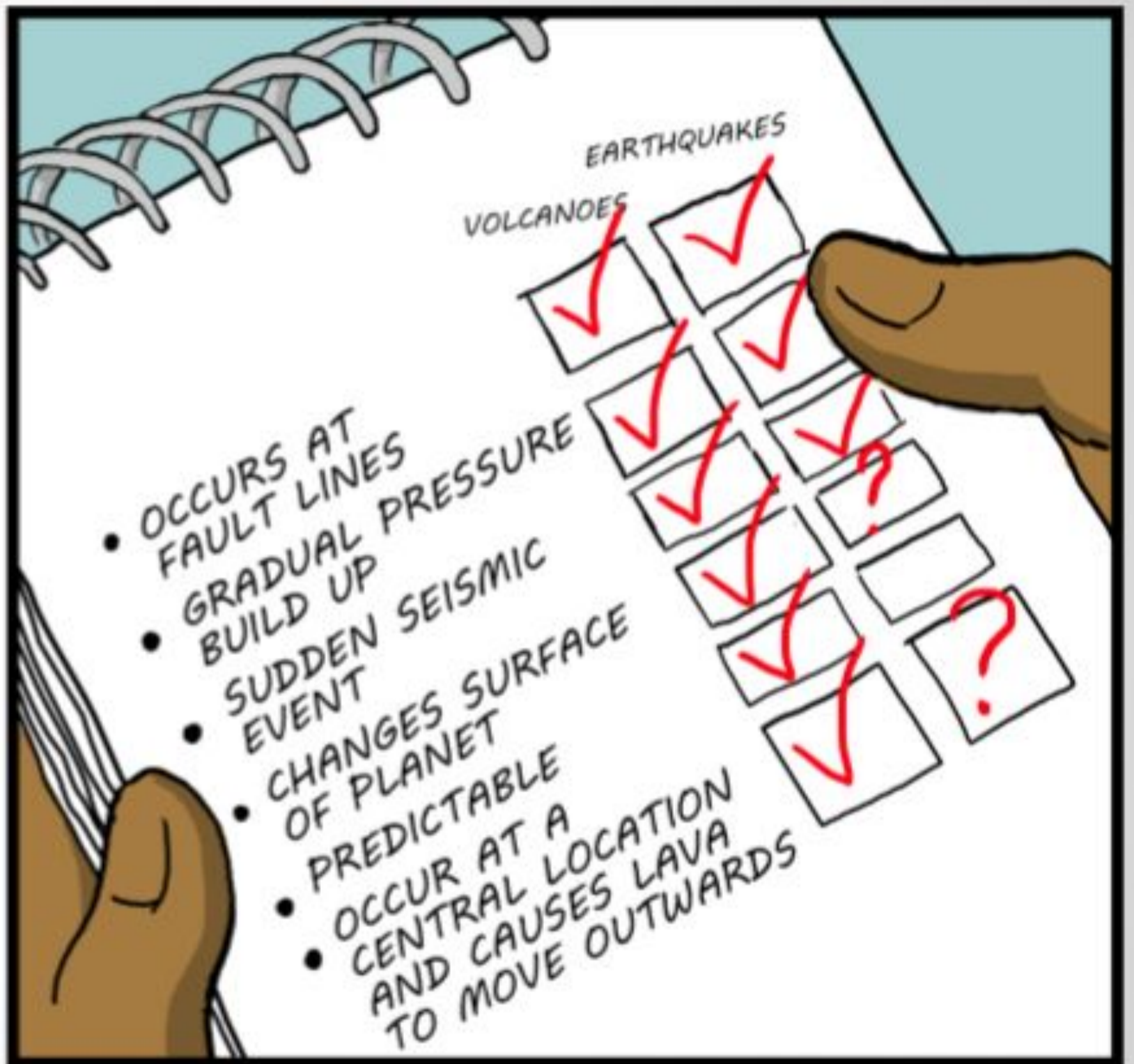
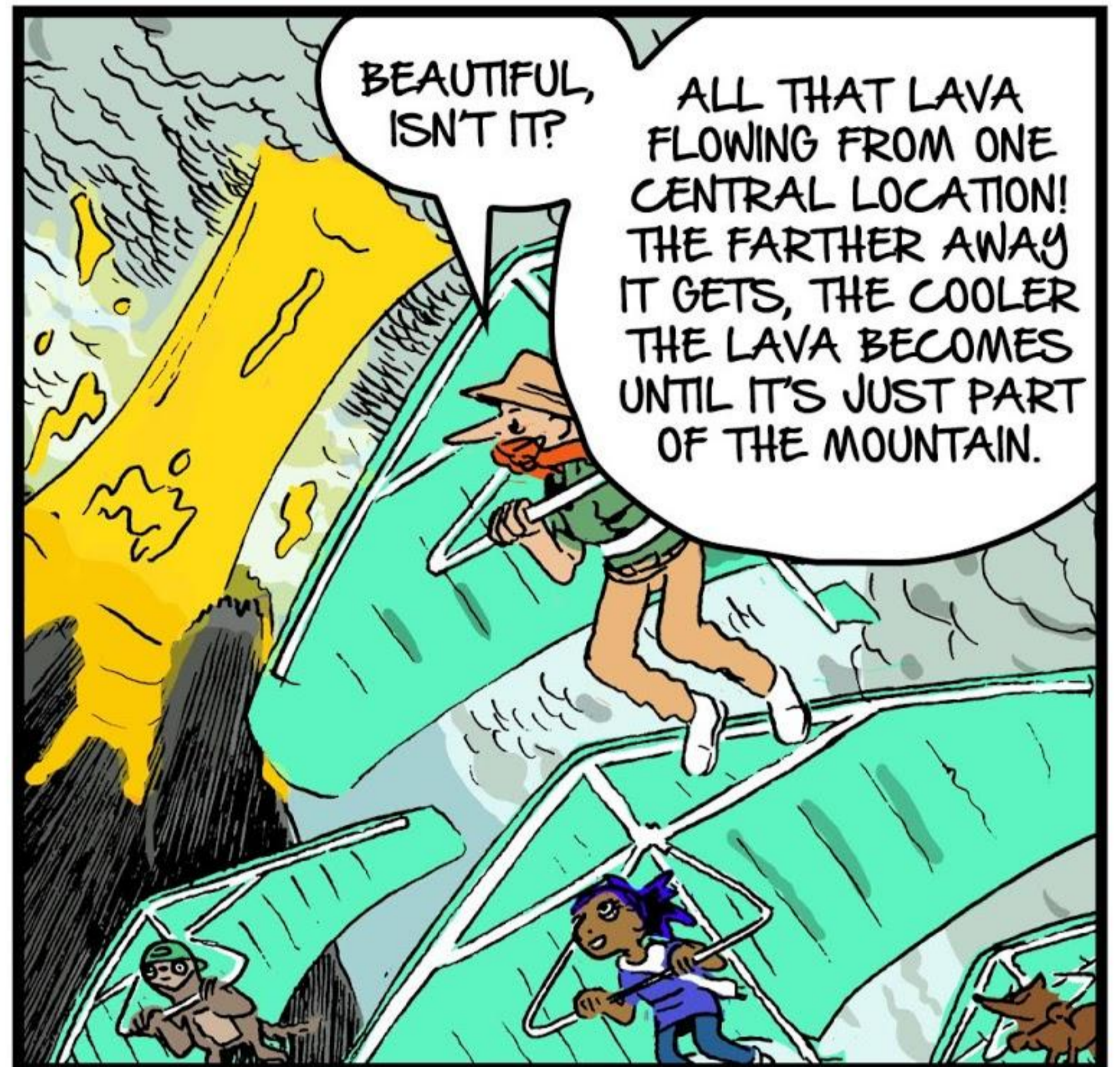
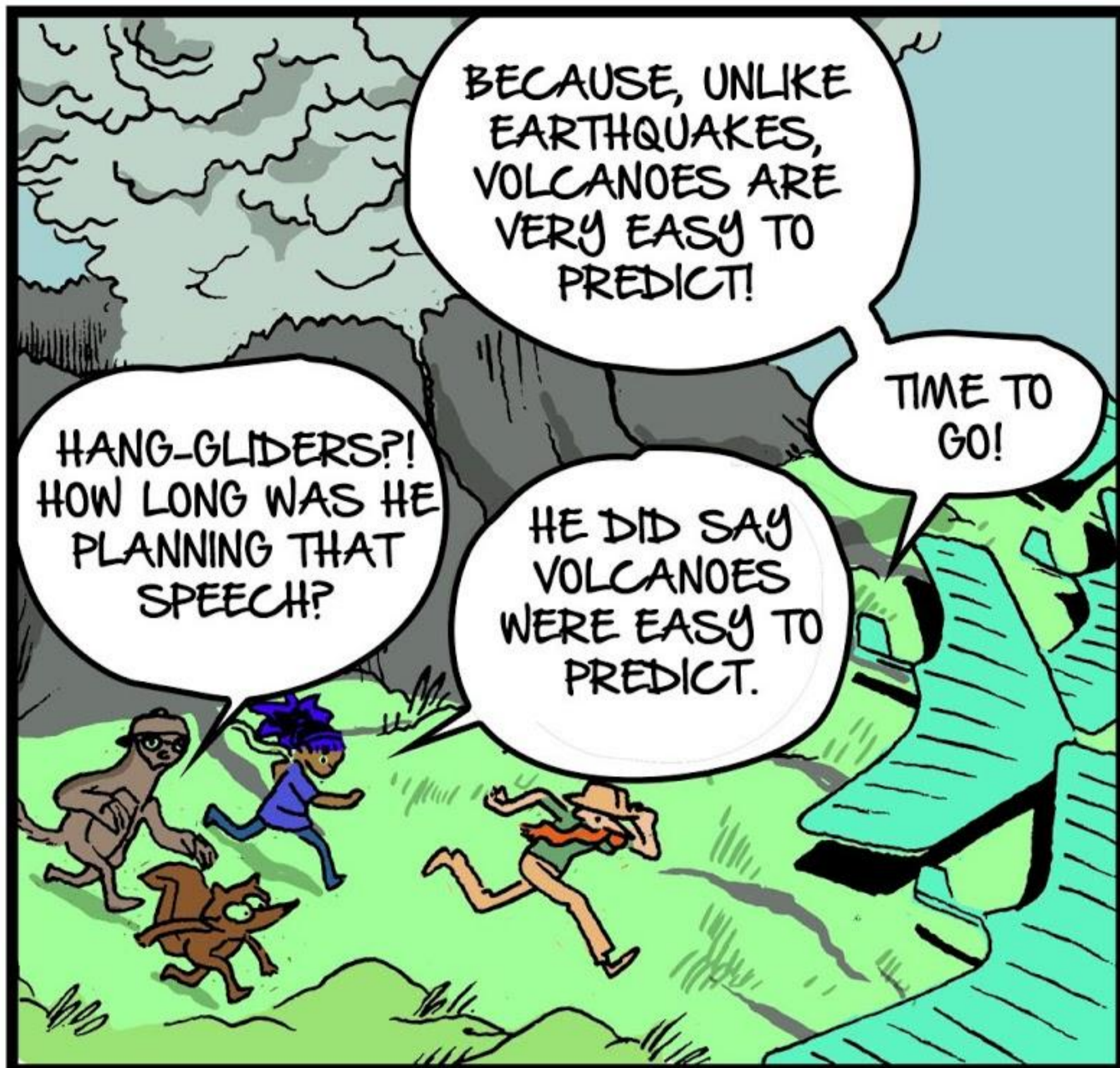
THE EARTH'S SURFACE IS BROKEN UP INTO PIECES THAT ARE CALLED TECTONIC PLATES.



FAULT LINES CAN EXIST BETWEEN TWO PLATES. AND IT'S AT THE BOUNDARIES BETWEEN PLATES WHERE MOST VOLCANOES OCCUR.

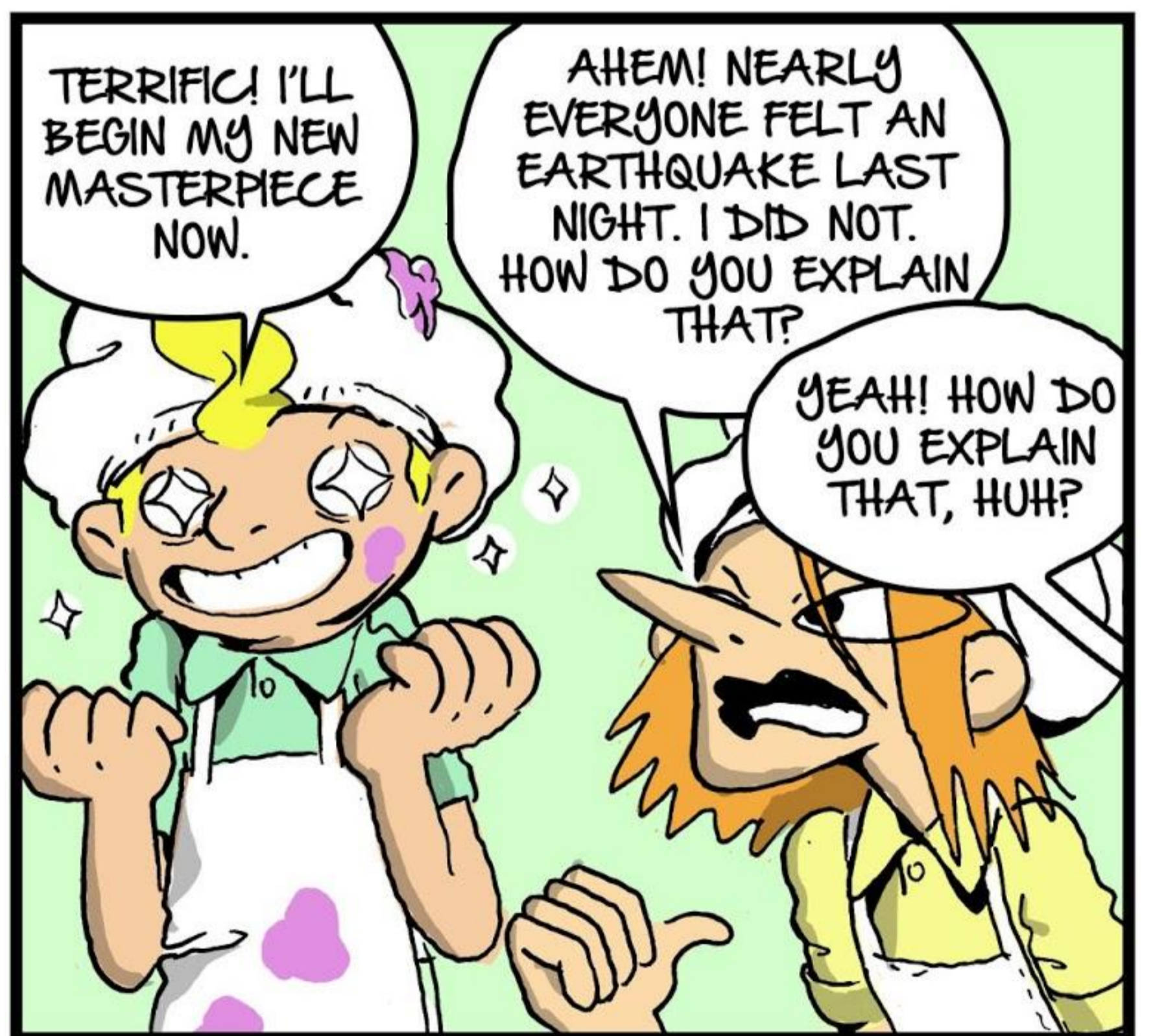
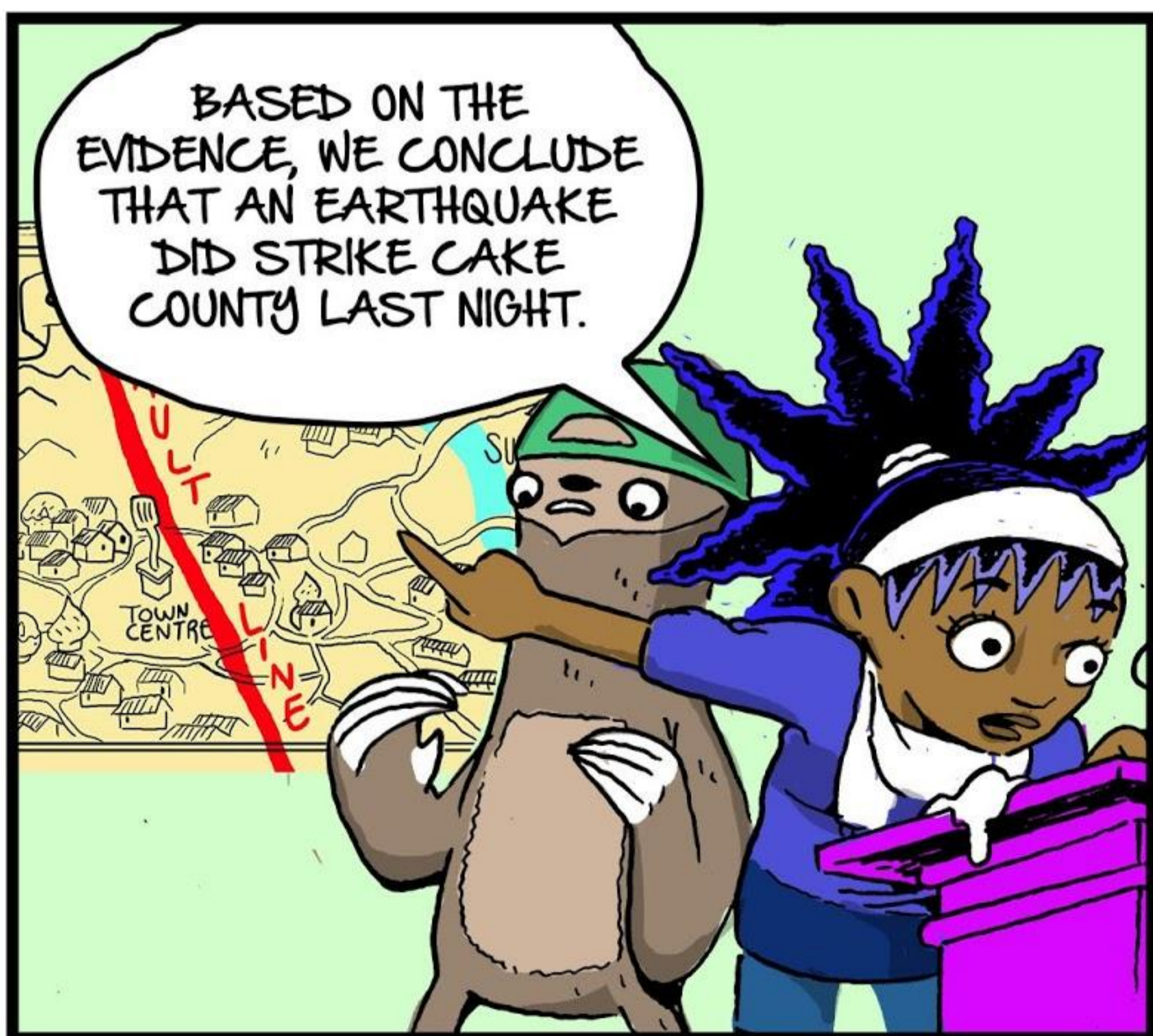
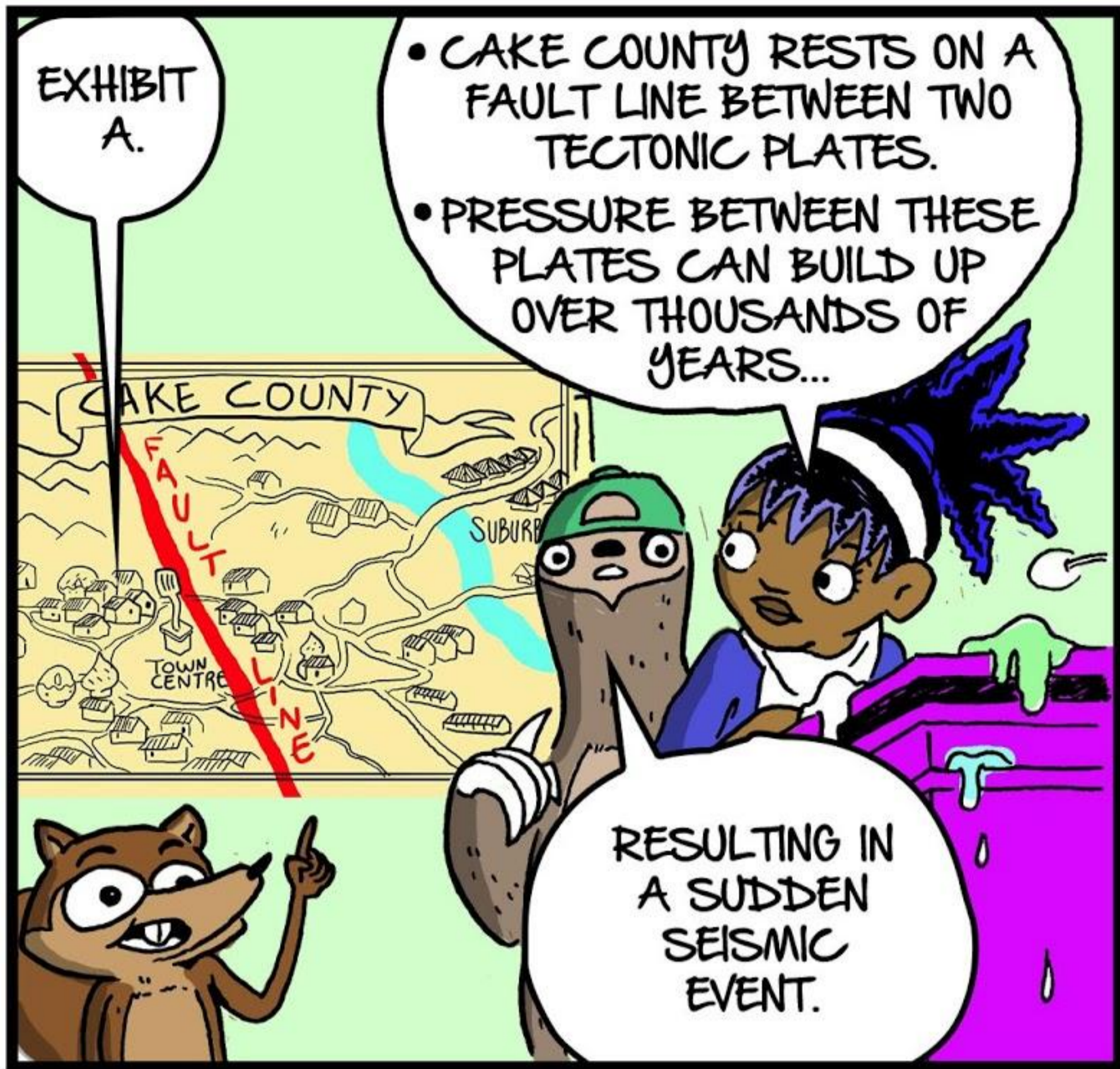


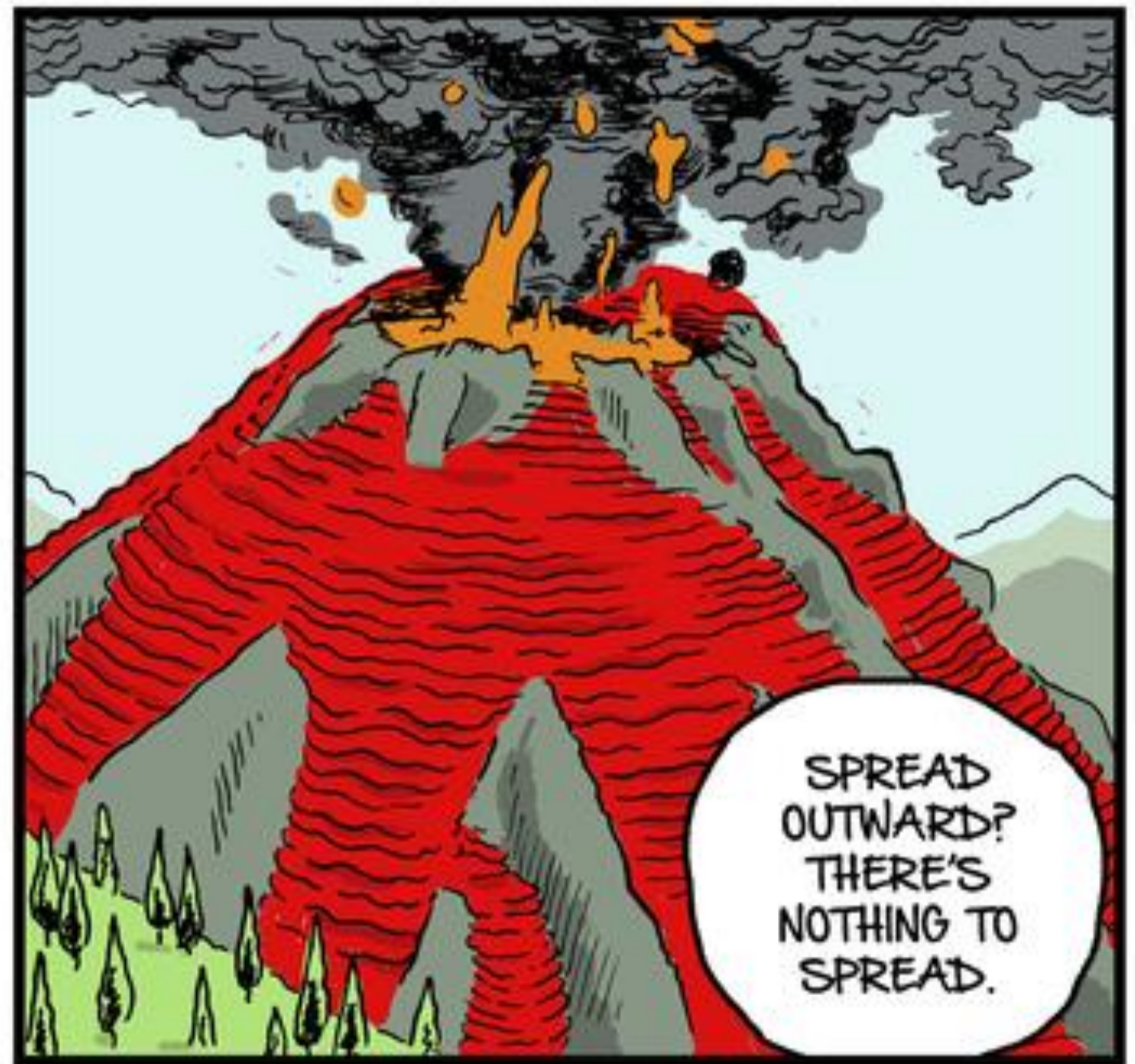




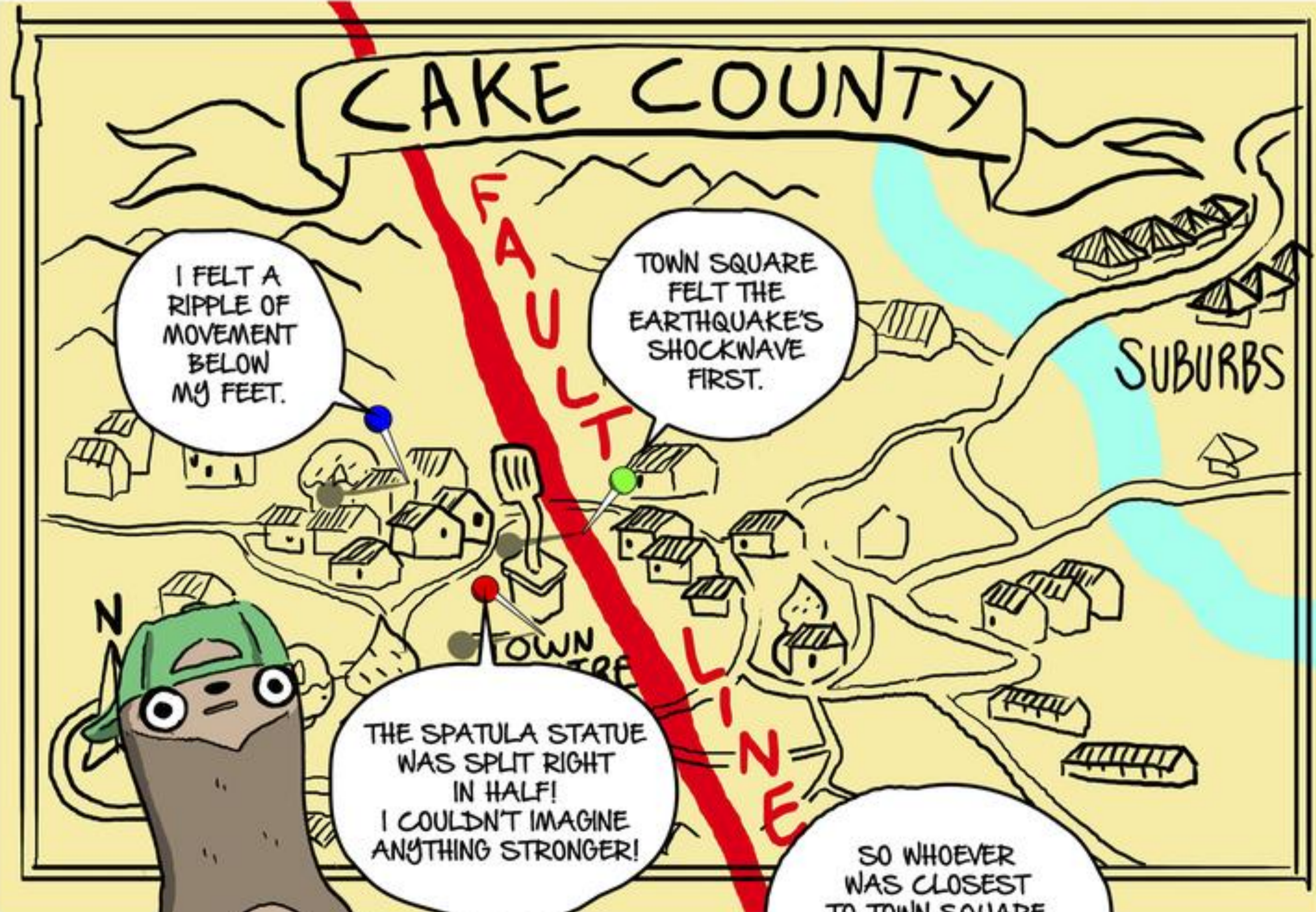








WHERE DID EVERYONE NOTICE CHANGES TO CAKE COUNTY AFTER LAST NIGHT?



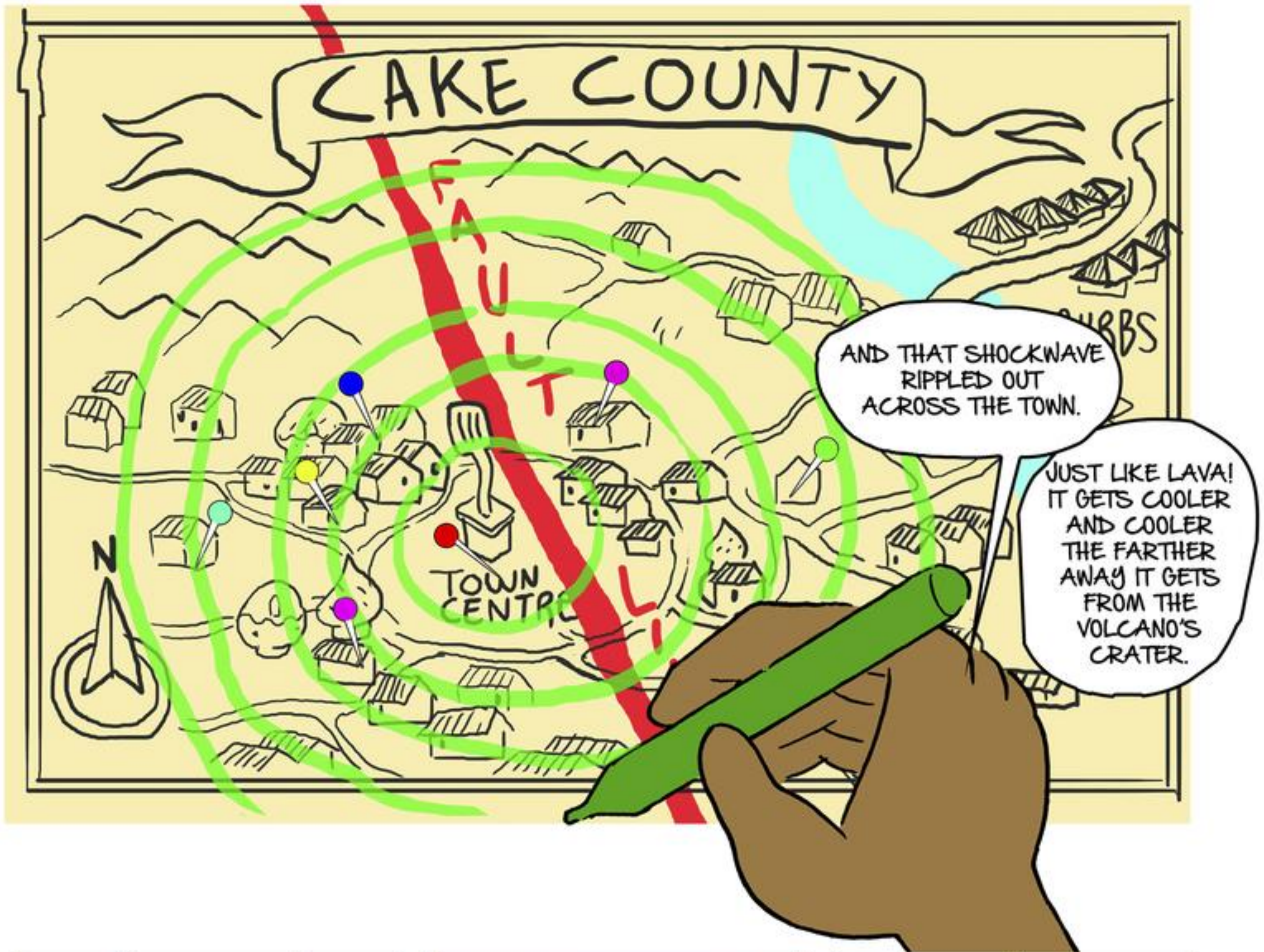
I FELT A RIPPLE OF MOVEMENT BELOW MY FEET.

TOWN SQUARE FELT THE EARTHQUAKE'S SHOCKWAVE FIRST.

THE SPATULA STATUE WAS SPLIT RIGHT IN HALF! I COULDN'T IMAGINE ANYTHING STRONGER!

SO WHOEVER WAS CLOSEST TO TOWN SQUARE FELT THE EARTHQUAKE THE STRONGEST.





HOW DID MOSA KNOW WHERE LEONARDO LIVED?