

MOSA MACK **AND THE CASE OF THE** **THE SUGAR SHOWDOWN**



PARENTS ACROSS THE NATION WANT TO BAN HALLOWEEN...

A WHOLE HOLIDAY FOR EATING SUGAR? NO WAY!

SUGAR MAKES OUR KIDS HYPER!! IT'S A SCIENTIFIC FACT!!

LIVE

NO TO CANDY!

CANDY CRISIS AT CAPITOL

BUT KIDS ARE FIGHTING BACK.

THEY HAD HALLOWEEN WHEN THEY WERE KIDS! WHY CAN'T WE?

"SCIENTIFIC FACT," HUM? LIKE "TV ROT'S YOUR BRAIN"?!

CANDY IS HYPER!

NO HALLOWEEN! NO CANDY!

LIVE

CANDY CRISIS AT CAPITOL

TODAY, AS LAWMAKERS CONSIDER A NATIONAL BAN ON HALLOWEEN, THEY HEAR FROM BOTH SIDES OF THE DEBATE.

BEFORE WE BEGIN TODAY'S HEARING, SOME GROUND RULES.

NO YELLING, NO THREATS OF PUNISHMENT, AND NO CANDY.

NO CANDY?! I GUESS WE KNOW WHAT SIDE YOU'RE ON!

YOU'RE JUST MAD BECAUSE YOU'RE OLD!

SHOW SOME RESPECT, YOUNG MAN, OR IT'S NO GAMES FOR A MONTH!

YOU'RE HOPPED UP ON CANDY RIGHT NOW. AREN'T YOU! AREN'T YOU?!!!!

BANG!

CANDY 4 EVER!

ORDER! ORDER!

EXCUSE ME?

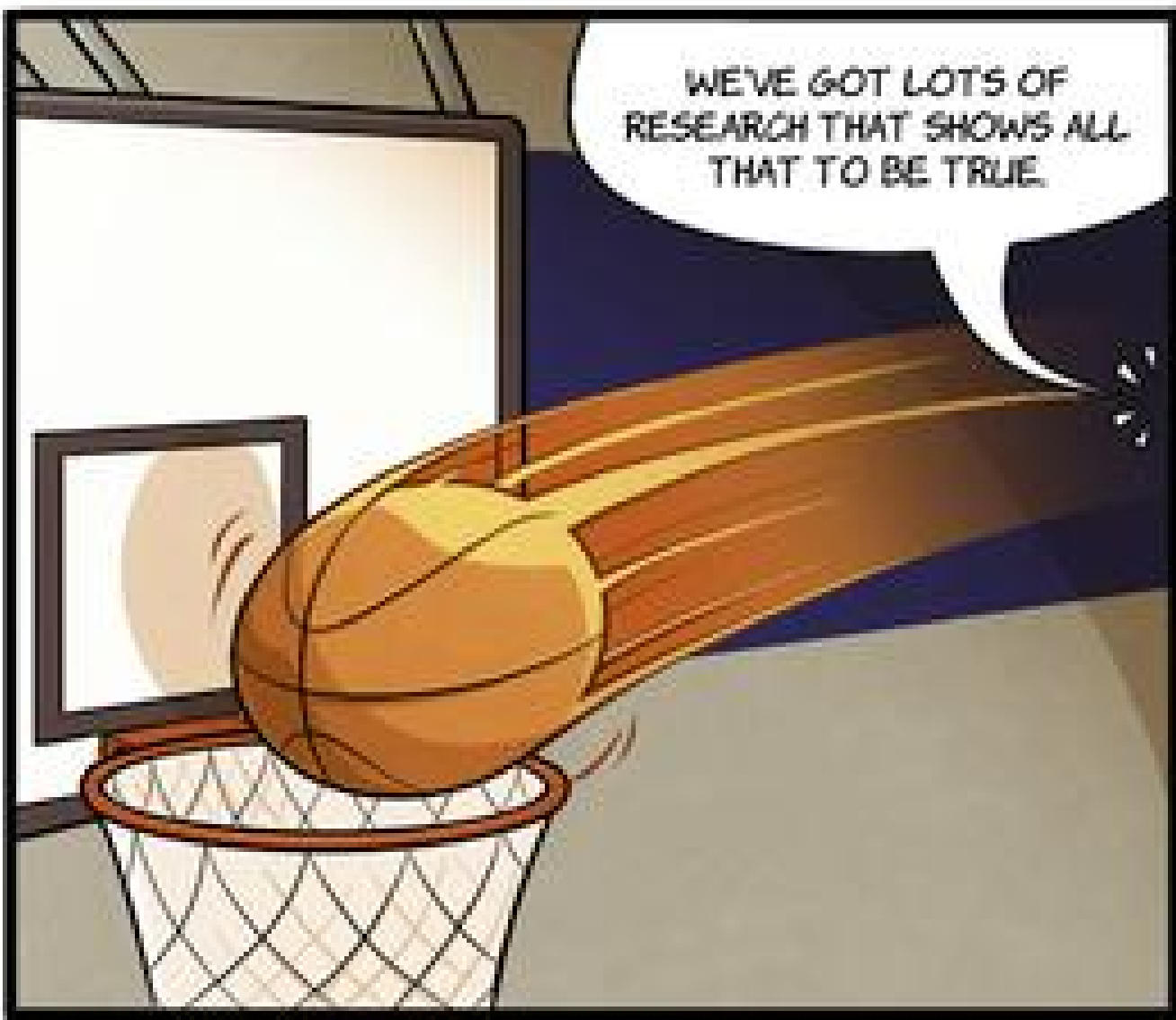
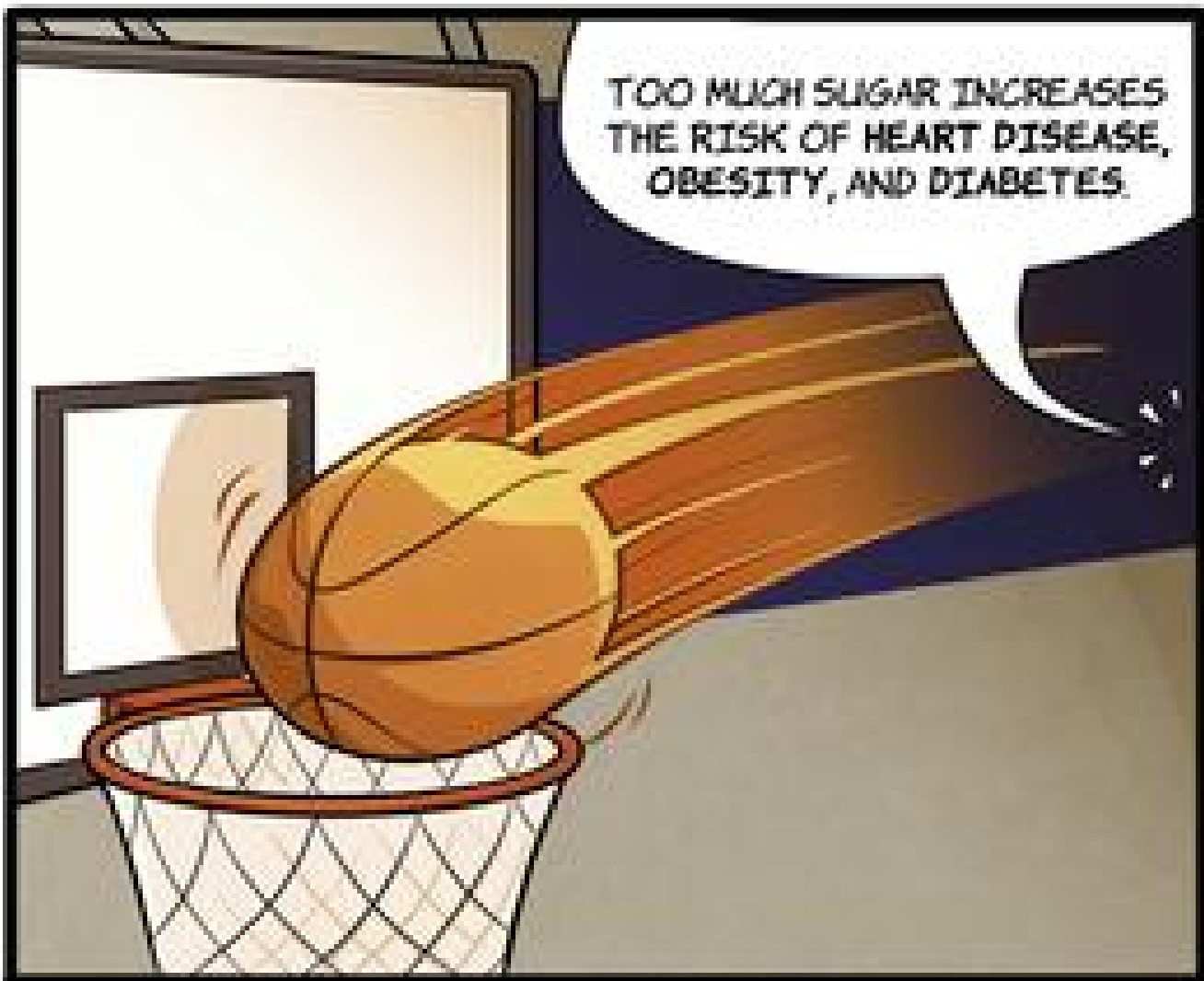
SOMEBODY SENT ME A TEXT?

CONGRESS

HURRY IT'S WHAT!!



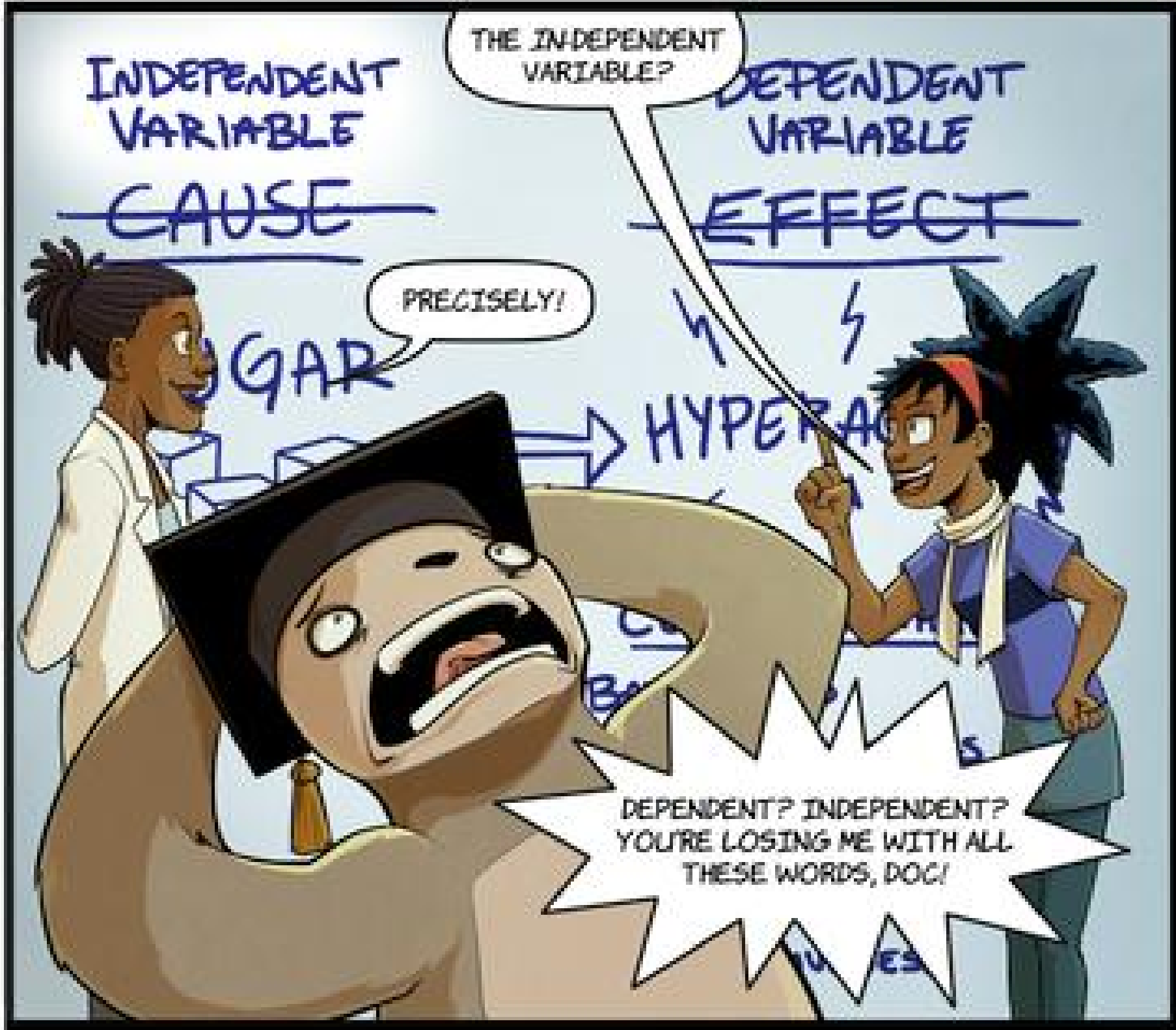
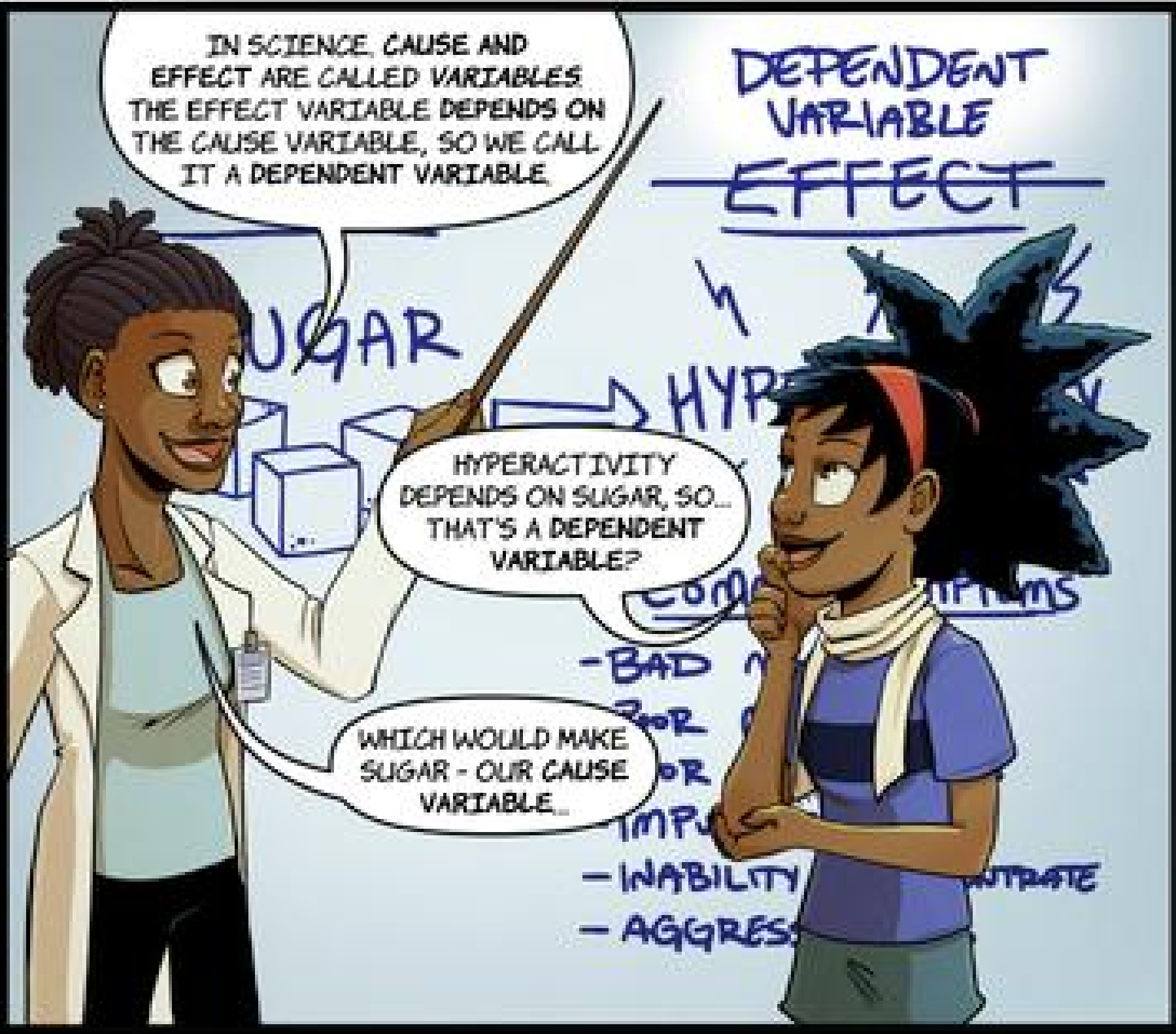
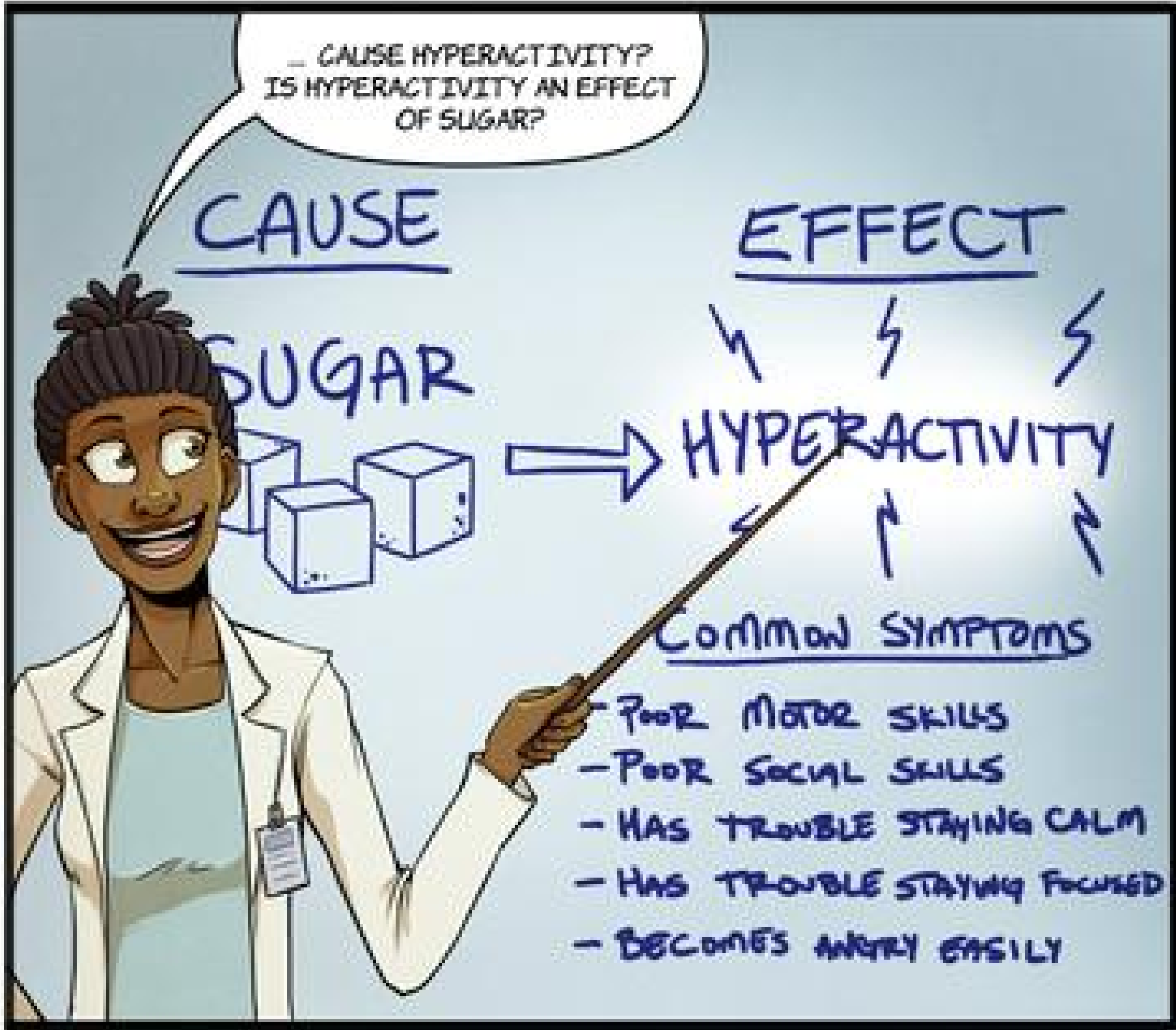
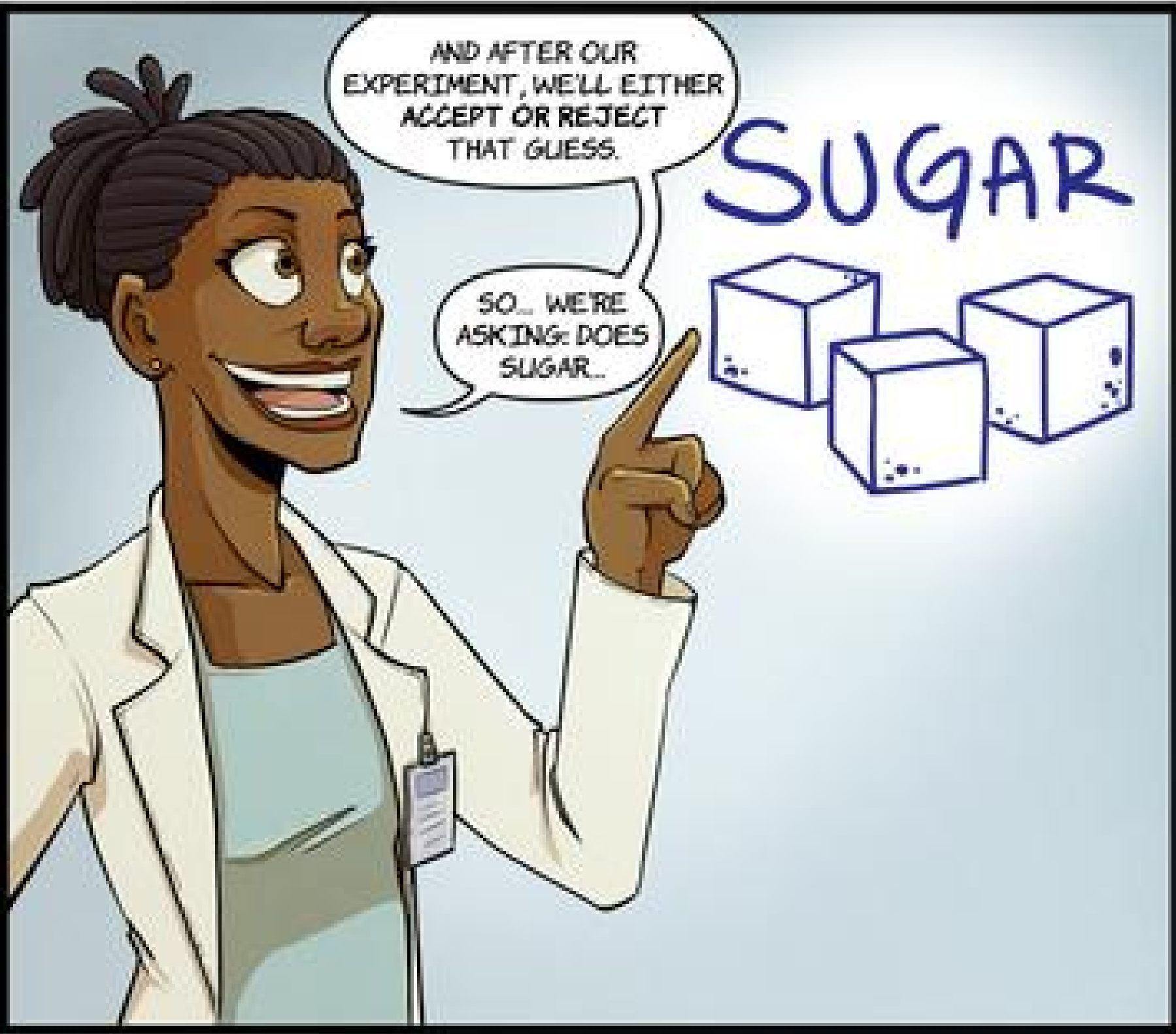


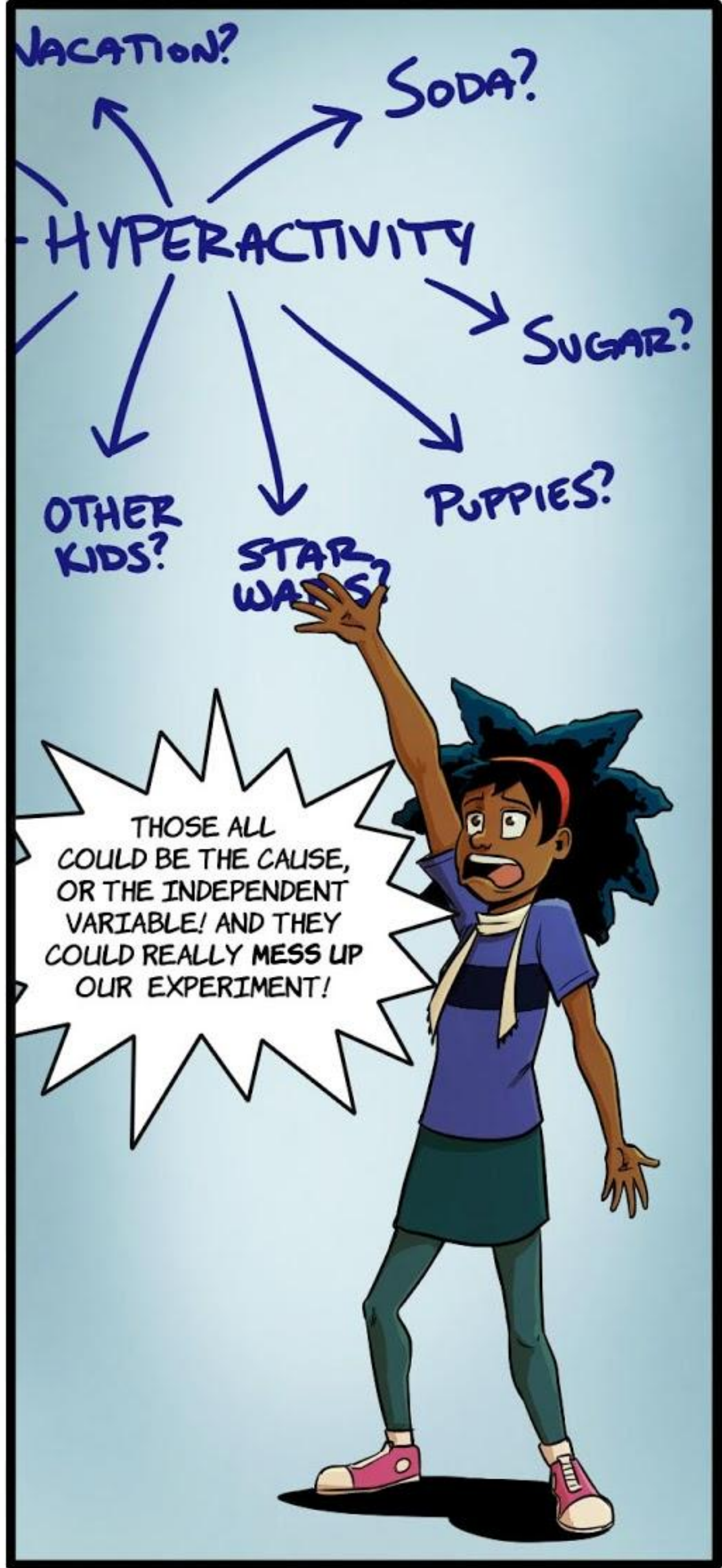
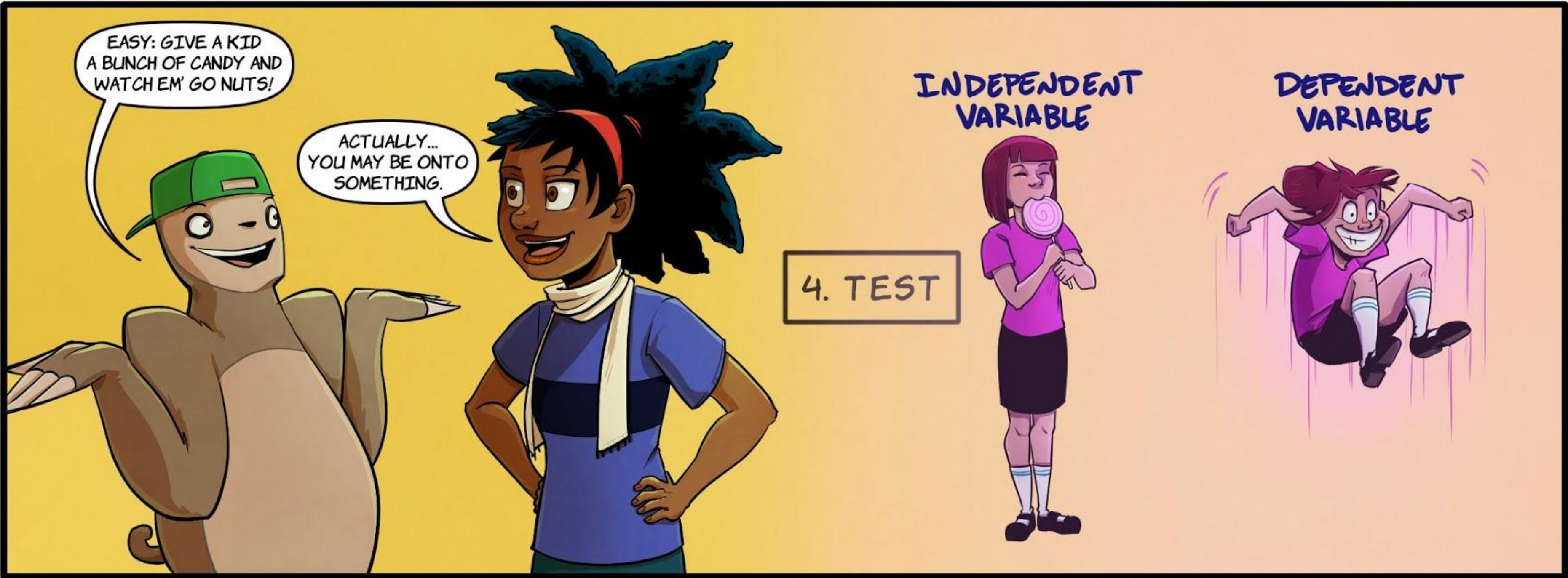
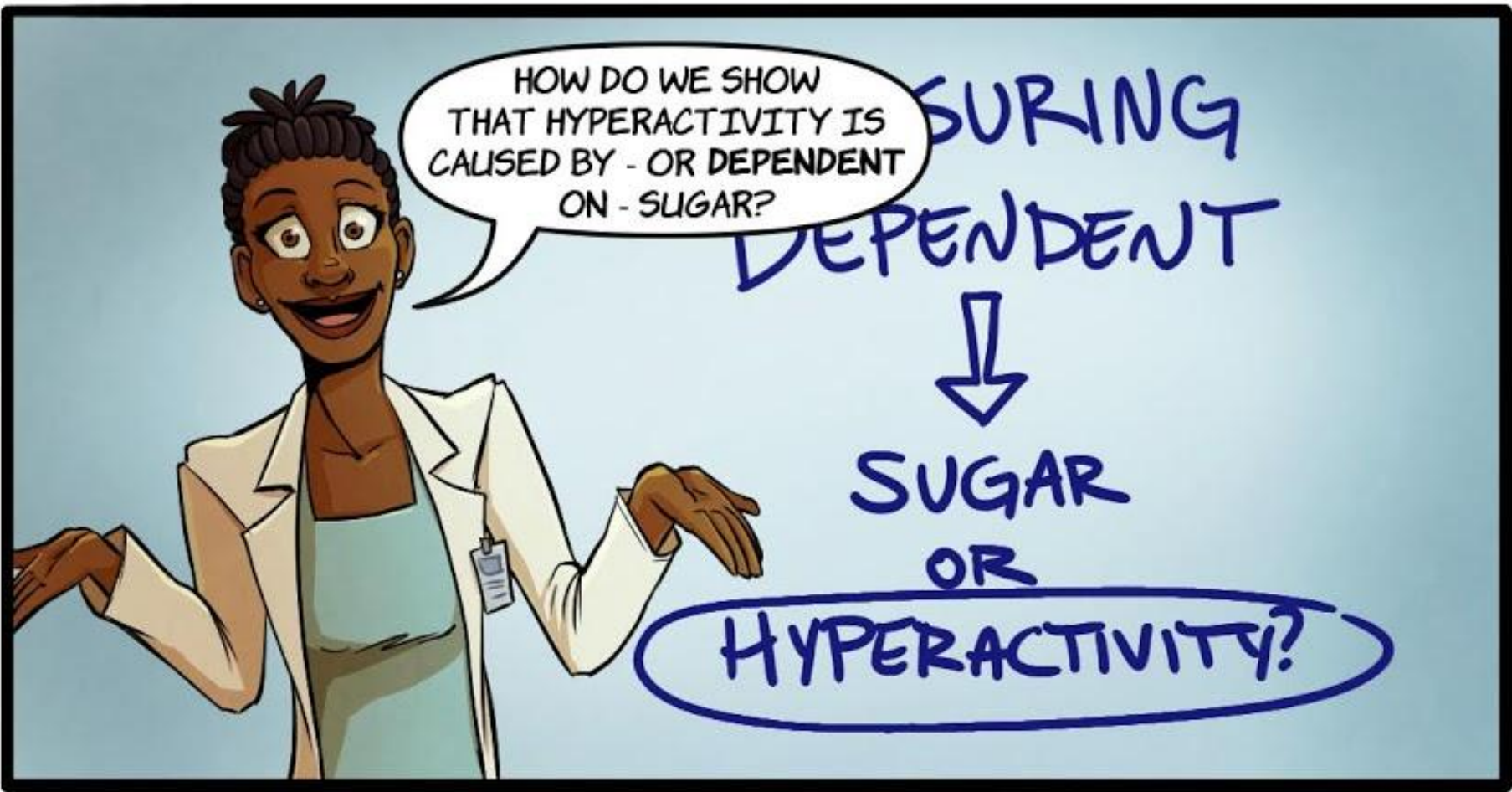
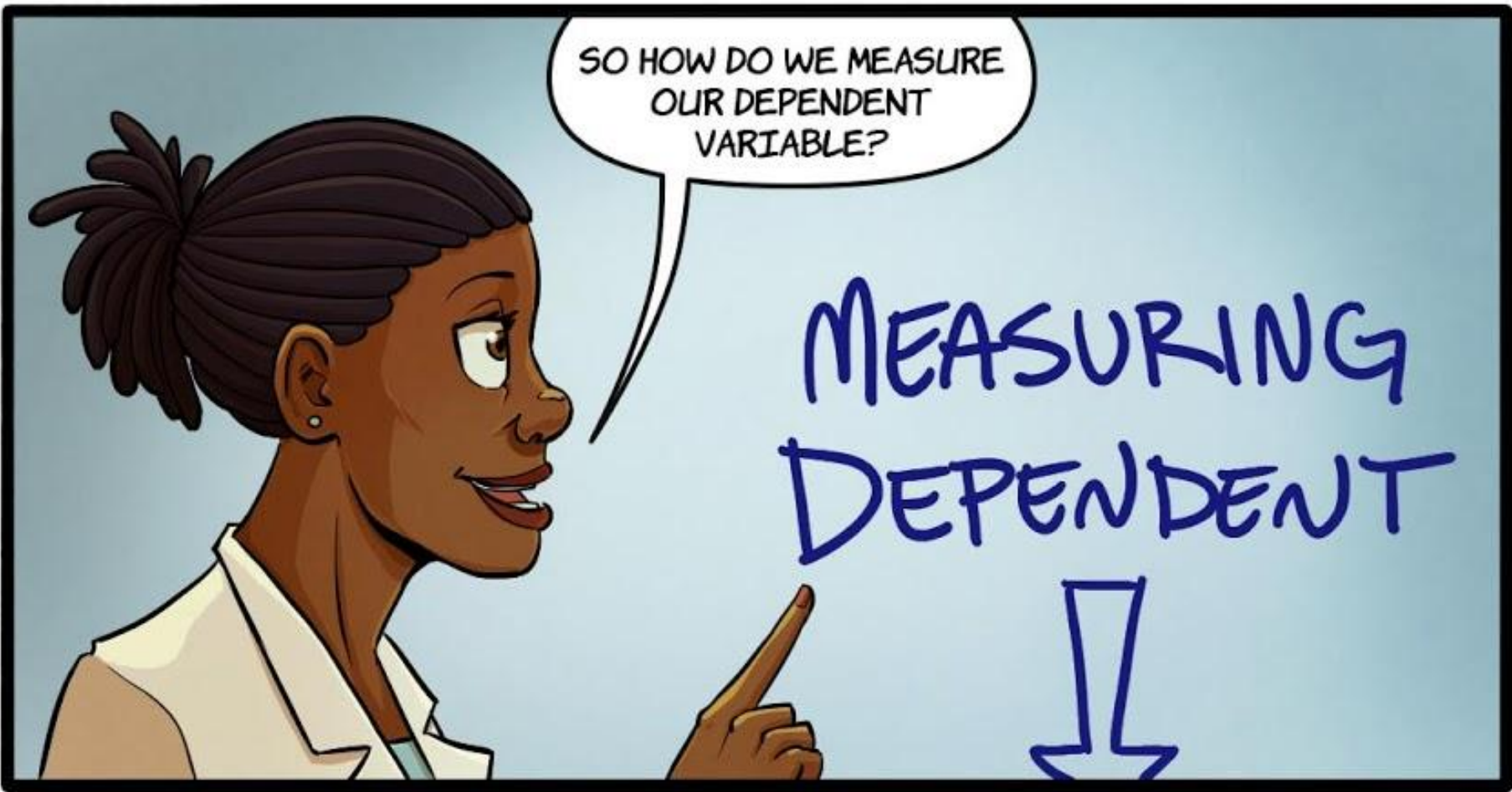


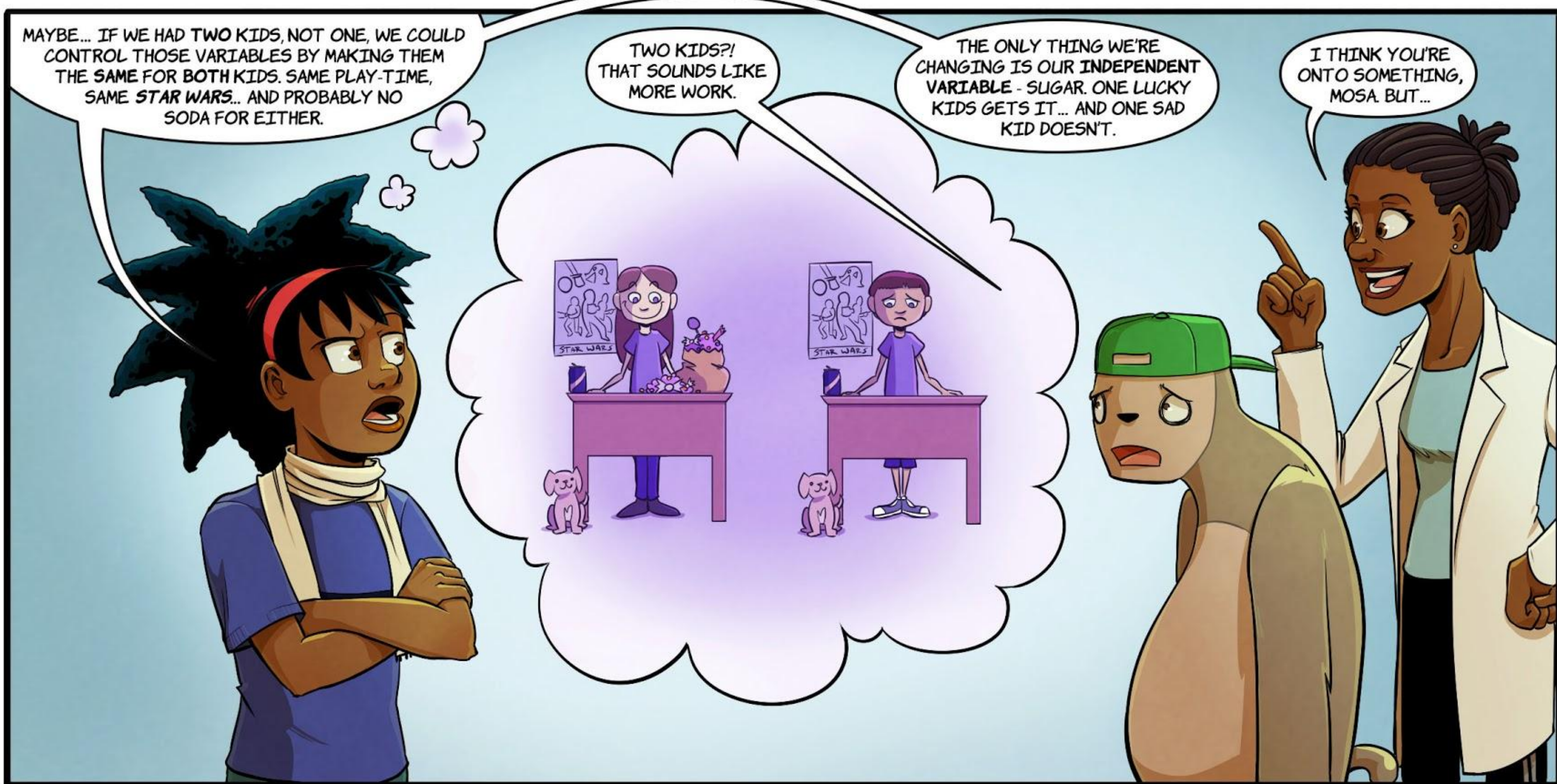
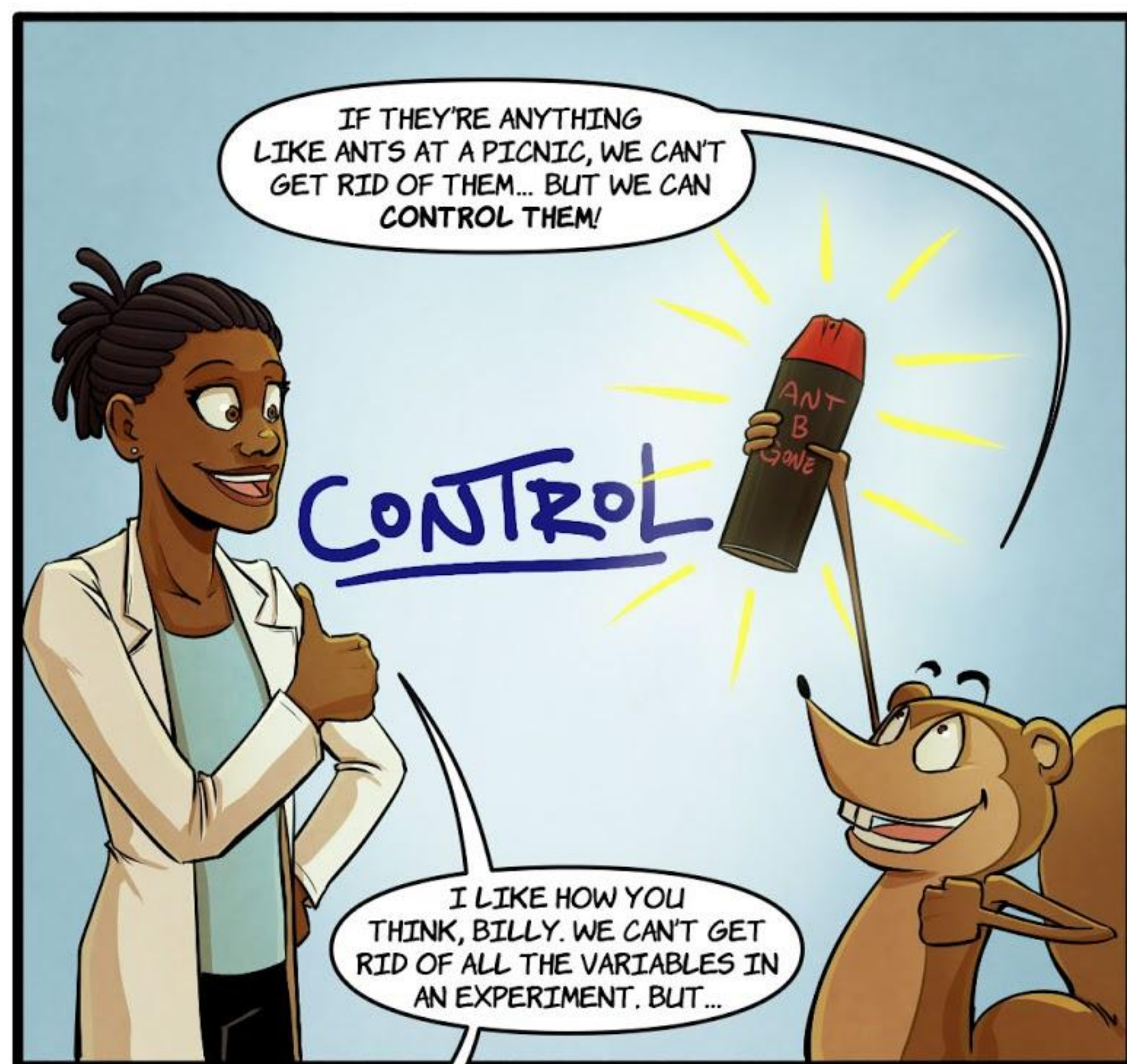
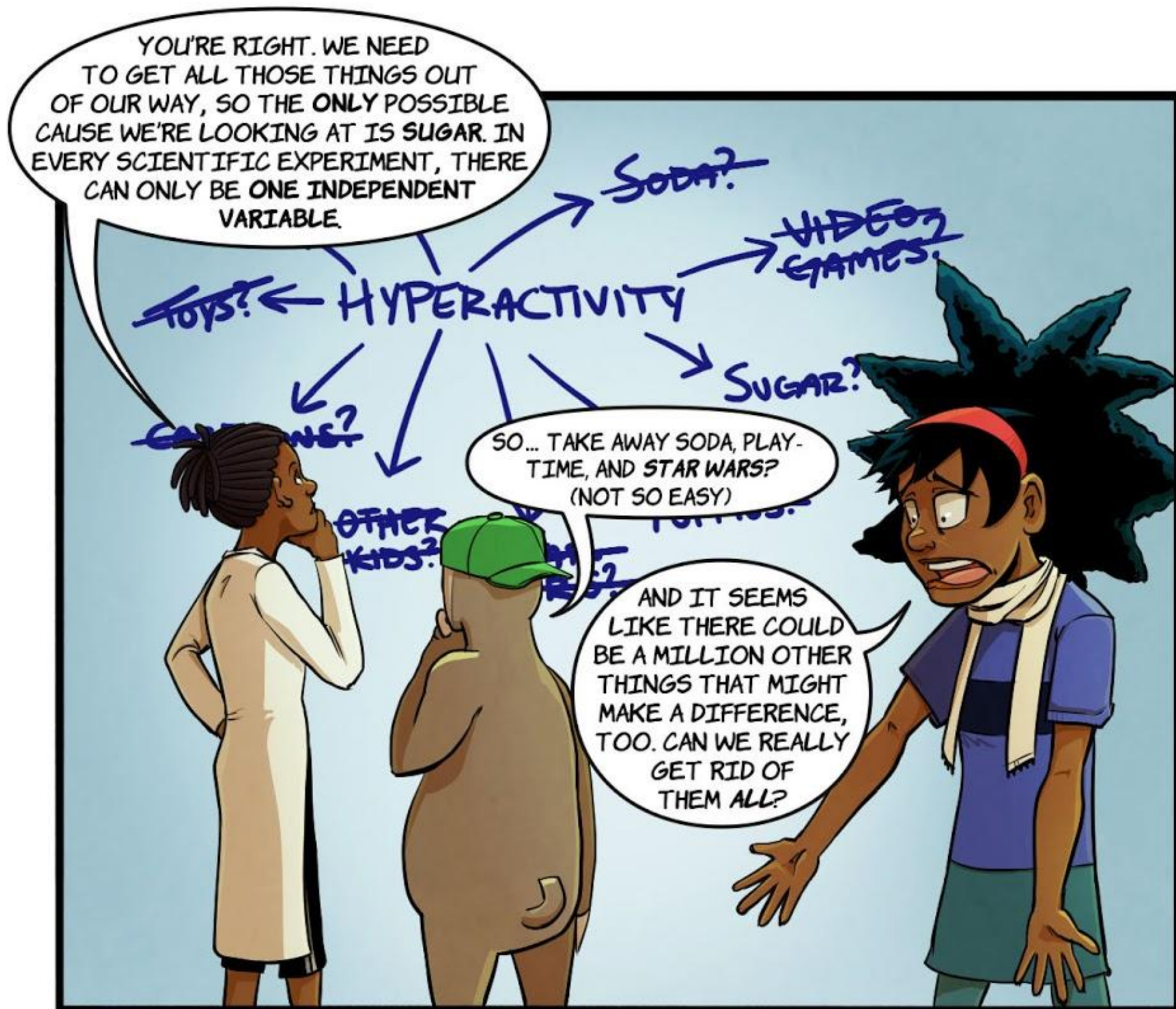
2. Research

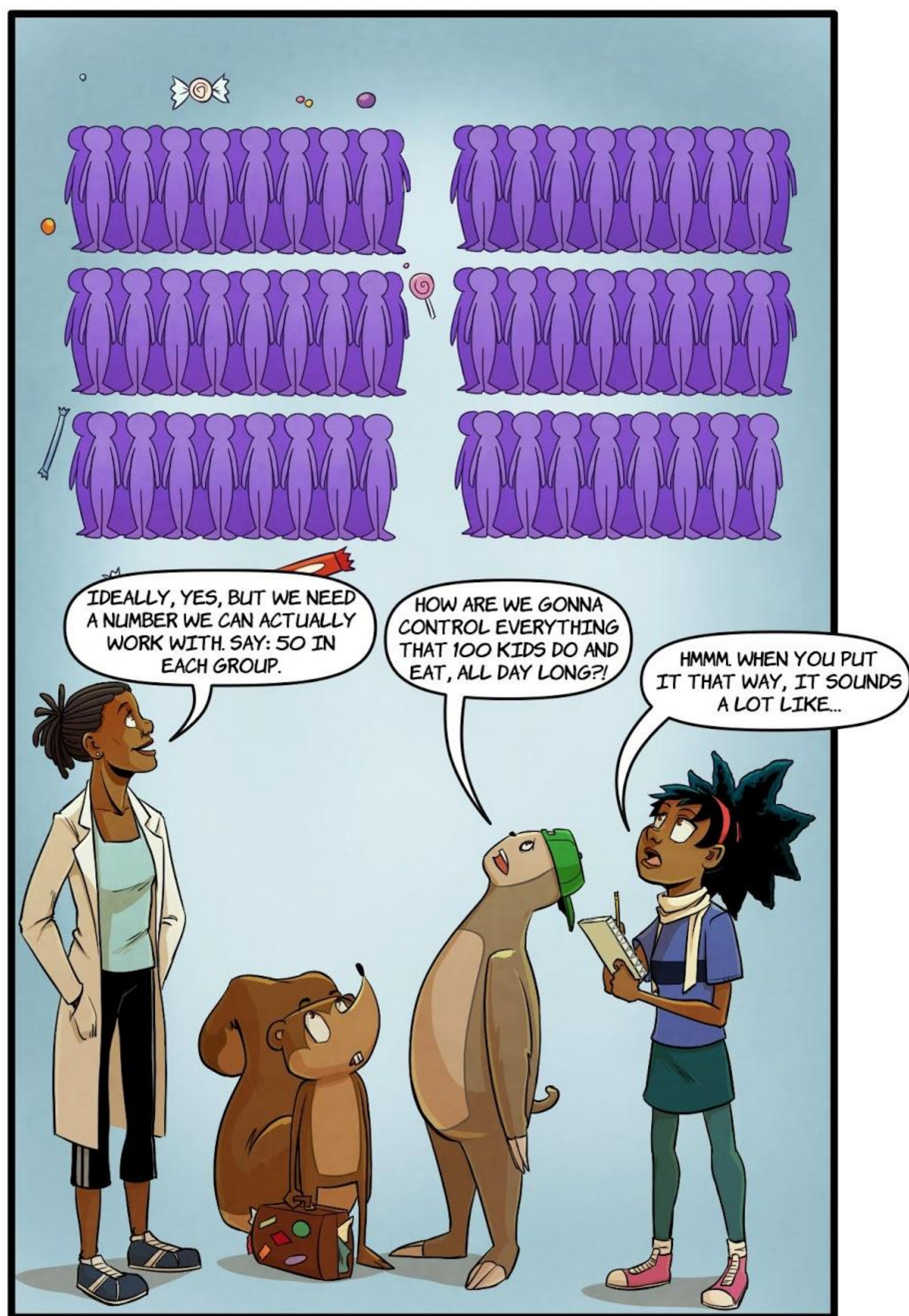


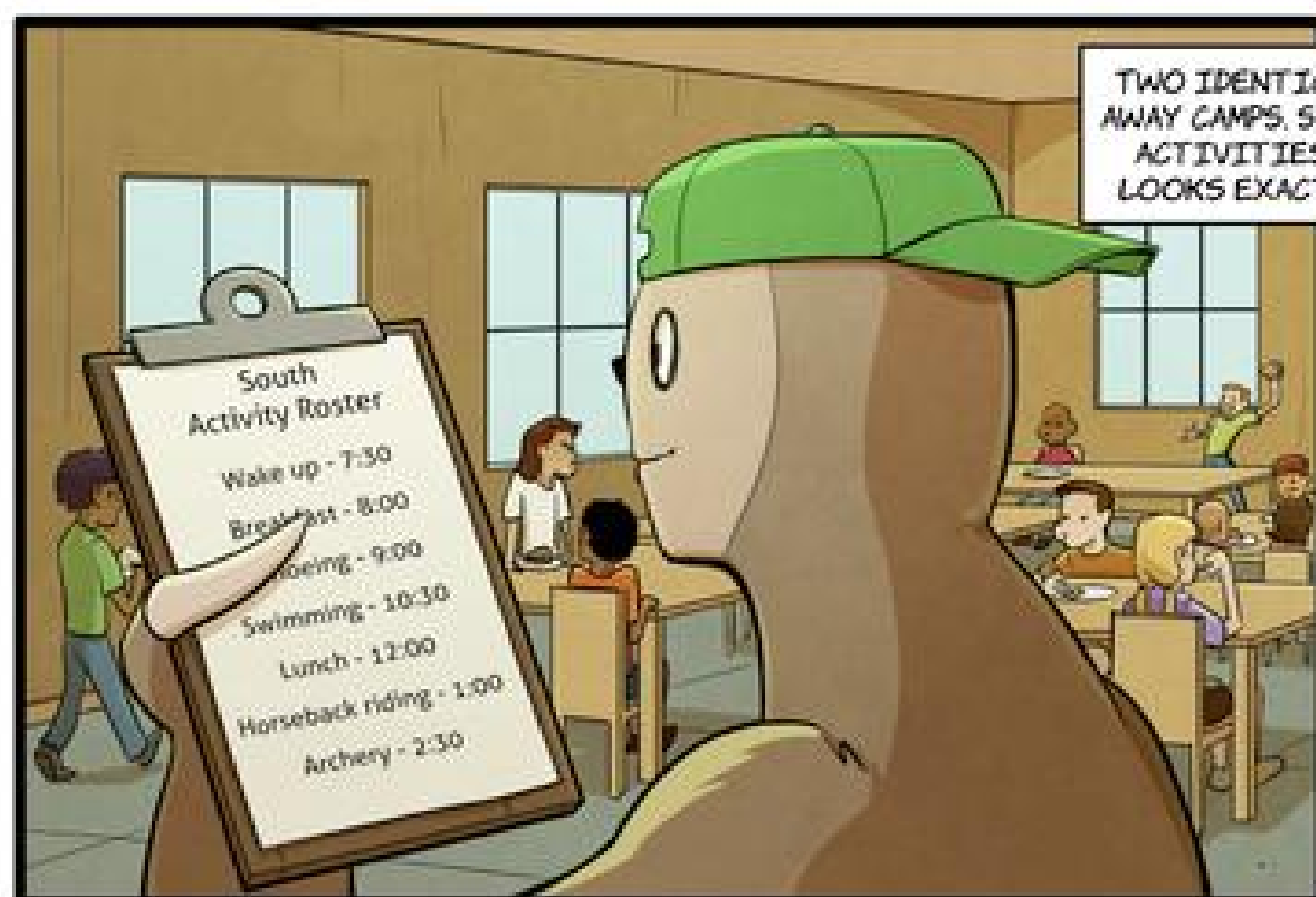
3. Our Hypothesis



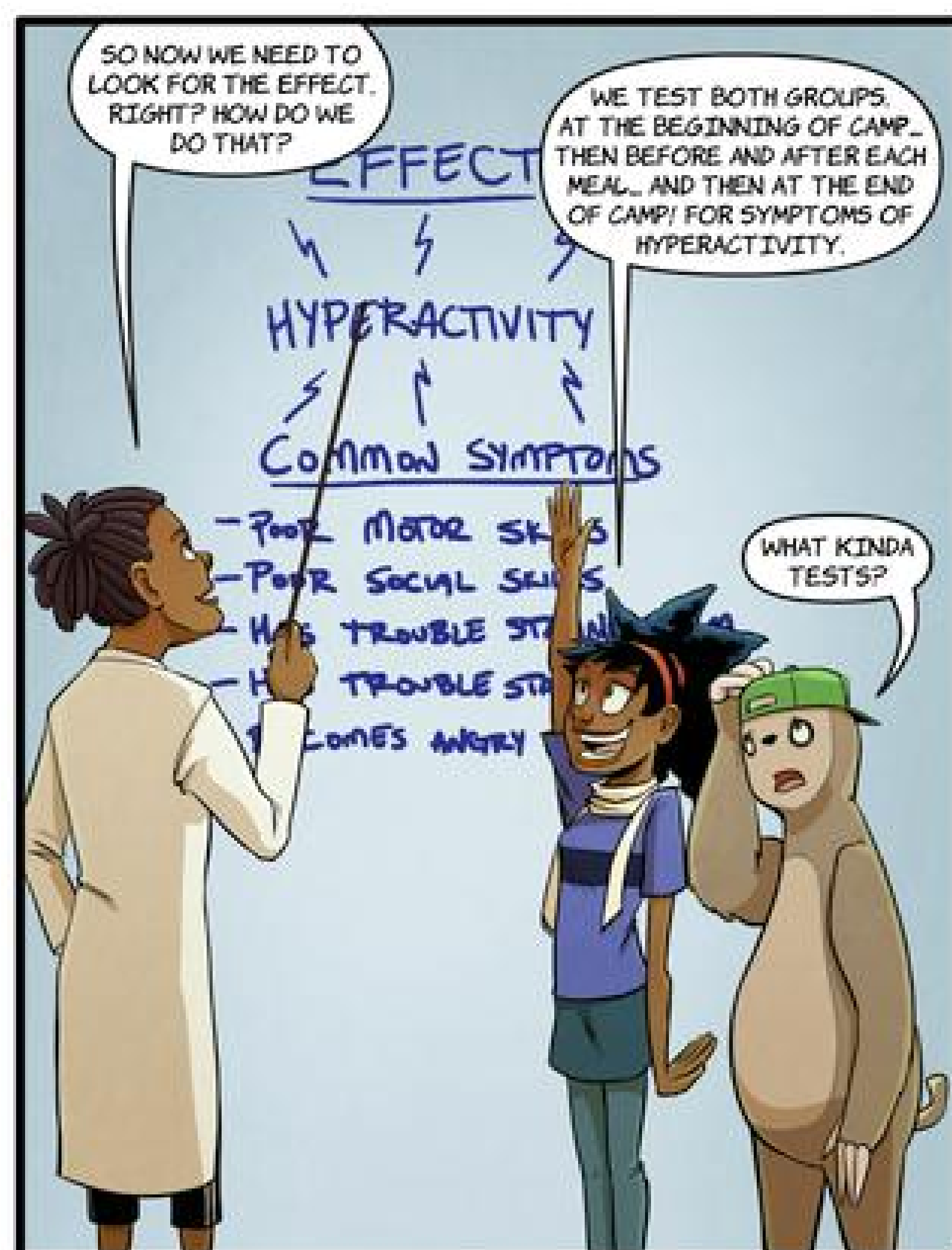
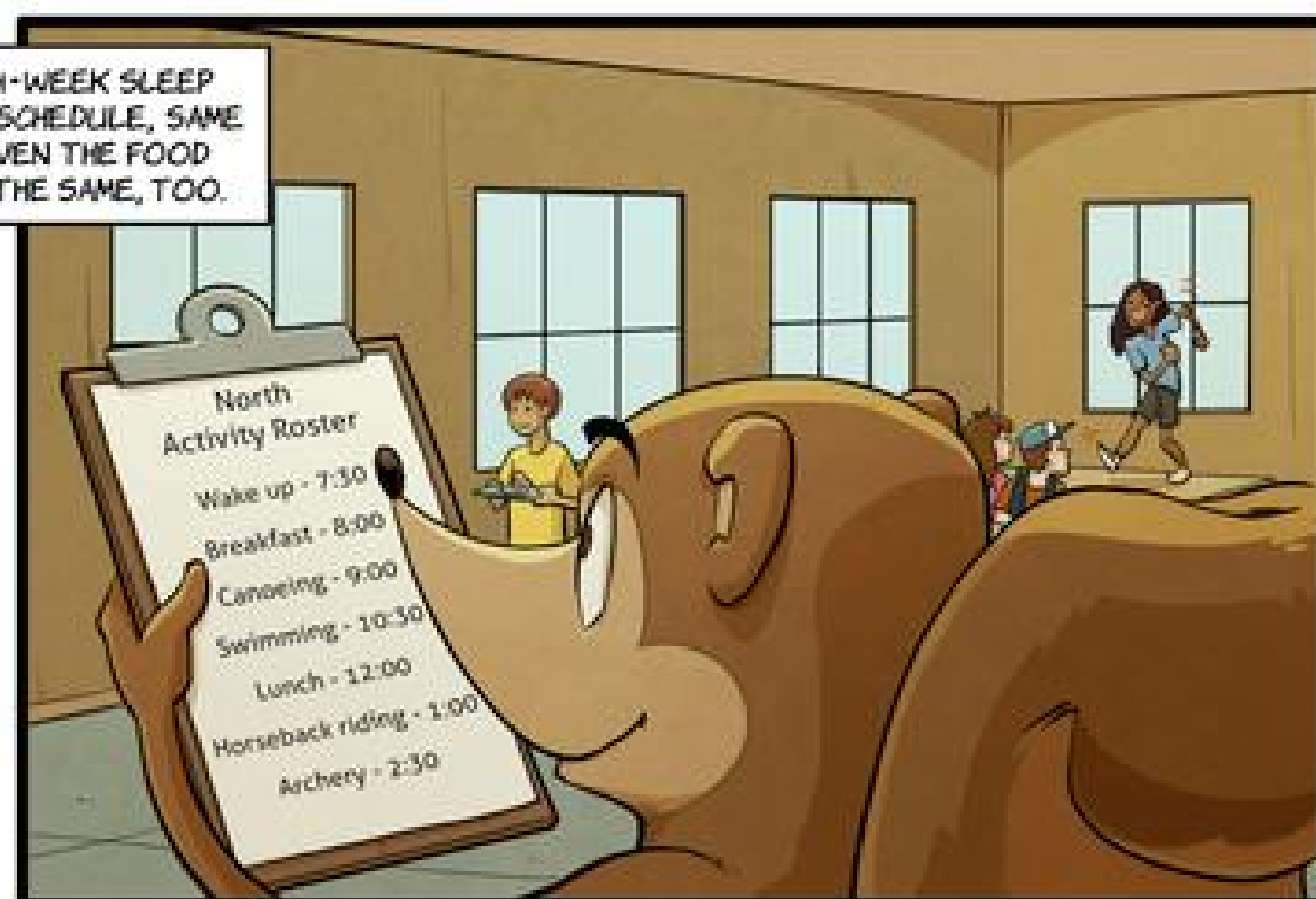








TWO IDENTICAL 4-WEEK SLEEP AWAY CAMPS, SAME SCHEDULE, SAME ACTIVITIES... EVEN THE FOOD LOOKS EXACTLY THE SAME, TOO.



South Camp

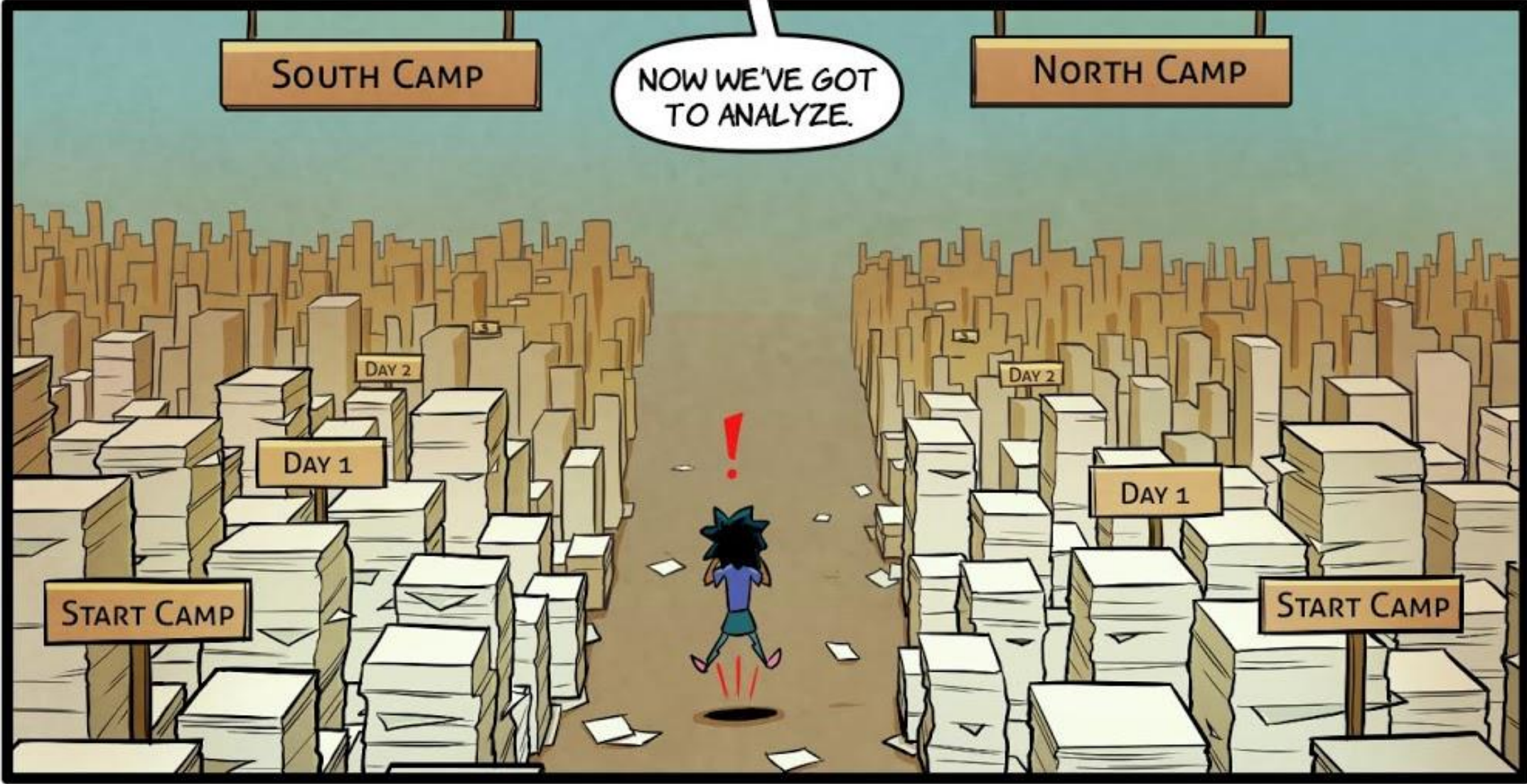
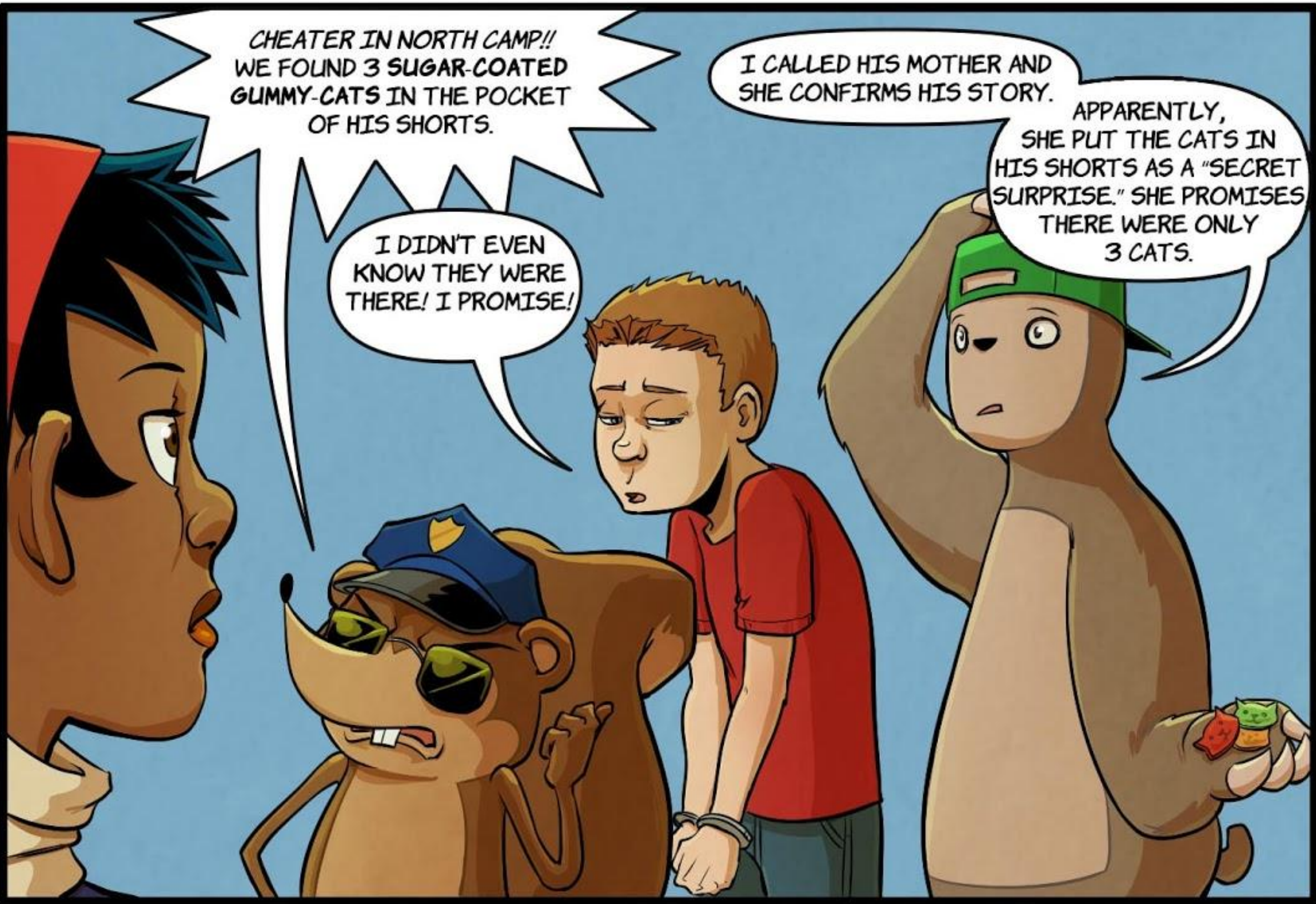
North Camp

TESTS DEVELOPED BY SCIENTISTS BEFORE US. TESTS THAT LOOK AT ATTENTION, MOOD, COORDINATION... ALL KINDS OF STUFF.

I GOTTA TELL YOU, MOSA. IF I WAS A TWIN LAKES CAMPER, ALL THIS TESTING WOULD DEFINITELY GET ME ANXIOUS... OR MAD... OR BOTH.

THE KIDS BARELY EVEN NOTICE! IT'S ALL JUST CAMP STUFF TO THEM!





Overall Results



VARIABLES	SOUTH Camp (Sugar)	NORTH Camp (Stevia)
MOOD	Happy: 8.6 Calm: 7.6 Alert: 7.6	Happy: 8.2 Calm: 7.9 Alert: 7.4
MOTOR SKILLS	7.5	7.6
SOCIAL SKILLS	8.1	8.0
ABILITY TO CONCENTRATE	6.8	6.7
IMPULSIVENESS	4.5	4.2
AGGRESSIVENESS	3.7	3.9





DOES MOSA ACCEPT OR REJECT HER HYPOTHESIS?